

MULTITOOLS	4
Y WRENCHES	6
HEX & TORX WRENCHES	8
GENERAL SHOP TOOLS	12
PLIERS	24
TORQUE WRENCH & ACCESSORIES	30
BOTTOM BRACKET TOOLS	32
CRANKSET TOOLS	38
E-BIKE TOOLS	42
PEDAL TOOLS	44
CHAIN	50
CASSETTE & FREEWHEEL TOOLS	54
BRAKE TOOLS	60
FRAME & FORK TOOLS	64
BEARING TOOLS	72
SUSPENSION TOOLS	74
WHEEL TOOLS	80
TIRE & TUBE TOOLS	88
WHEEL TRUING STANDS & ACCESSORIES	92
REPAIR STANDS & ACCESSORIES	96
BIKE STORAGE	110
TOOL SETS	112
COMPLETE SERVICE SOLUTIONS	122
WORKSHOP A LA CART	128
UNIOR GEAR	138
SPARE PARTS	142

NEW

Pro truing stand

93



Speed pedal wrench

45



Wooden base for 1689

94



Spoke wrench

81



BMX Kit

113



Shimano STEPS locking tool

43



Suspension service sink

129



Flare nut wrench

62



Chain wear indicator

52



Set of tire levers in a box

89





MULTITOOLS	8
Y WRENCHES	10
HEX & TORX WRENCHES	12
GENERAL SHOP TOOLS	16
PLIERS	28
TORQUE WRENCH & ACCESSORIES	34
BOTTOM BRACKET TOOLS	36
CRANKSET TOOLS	42
E-BIKE TOOLS	46
PEDAL TOOLS	48
CHAIN	54
CASSETTE & FREEWHEEL TOOLS	58
BRAKE TOOLS	64
FRAME & FORK TOOLS	68
BEARING TOOLS	76
SUSPENSION TOOLS	78
WHEEL TOOLS	84
TIRE & TUBE TOOLS	92
WHEEL TRUING STANDS & ACCESSORIES	96
REPAIR STANDS & ACCESSORIES	100
BIKE STORAGE	114
TOOL SETS	116
COMPLETE SERVICE SOLUTIONS	126
WORKSHOP A LA CART	132
UNIOR GEAR	144
SPARE PARTS	148

Racing since 2010

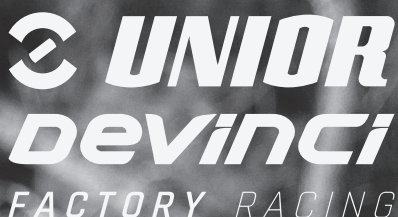
2010

Unior's first factory racing program was established in 2010, with a clear vision that still stands today – spread the word about Unior Bike Tools product and be a strong and competitive professional mountain bike team. In 8 years of racing under the UTT name we have achieved some amazing results and employed athletes from different countries and even continents. From Tanja Žakelj, who won the overall UCI XCO World Cup in 2013, to Reece Wilson, who got his first elite Top-30 in World Cup in our jersey and became a World Champion in 2020 under the Trek Factory Racing flag.



2018

Our merger with Canadian bicycle producer Devinci Cycles lead to the creation of one of the strongest mountain bike teams on the circuit. Riders from New Zealand, France, United States of America, Ireland, Canada and Slovenia achieved tons of memorable results, such as podium finishes for Dakotah Norton at World Cups in Lošinj and Lousa, Keegan Wrights' wins on Crankworx and Damien Oton's victory on Megavalanche.



2021

For the latest iteration of the team, Unior forged a new alliance with another Slovenian manufacturer. Sinter is manufacturer of high end brake pads for cycling & other industries and has joined the team as a title co-sponsor. The program will focus on downhill, BMX Freestyle and Slopestyle, with international rider line-up: Leona Pierrini (France), Ben Zwar (Australia/Sweden), Stan Nisbet (UK/Scotland) and Slovenians Jure Žabjek, Jaka Remec in Boris Režabek. The concept remains the same – offer athletes the best possible support, be the best ambassador to all our sponsors, continue to work hard and have fun while doing it.



FACTORY RACING



Teams we Support

Unior Bike Tools supports some of the world's best athletes and teams with many tools developed in conjunction with them. Racing is part of us.

There are other teams using Unior Bike Tools who are not officially supported by Unior but have chosen to invest in our tools.



TREK
FACTORY RACING



NS BIKES **UR**



Continental's
Atherton



COMMENCAL | **Muc-Off** 



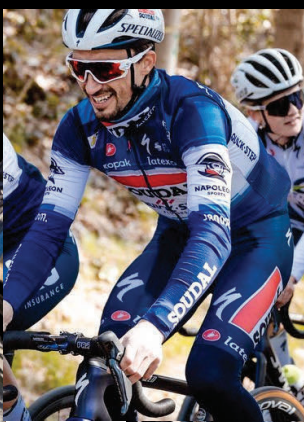
IBIS
ENDURO RACE TEAM



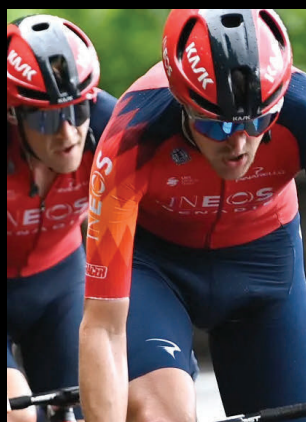
TRANSITION
FACTORY RACING



PROBIA
POSITIVE



SOU DAL
QUICKSTEP
Cycling Team



INEOS | **GRENADIER**
CYCLING TEAM



M **MOVISTAR**
TEAM



TREK | **Segafredo**
SAFETY



— MULTITOOLES



MULTITOOL EURO17

New Euro17 Multitool - Designed and produced in Slovenia, Europe, from the best materials to the highest standard. Tool spindles are chrome plated, additionally the tips black oxide coated to ensure the highest tolerance and greater durability. Chrome vanadium 4, molybdenum vanadium 52, chrome-silicon-vanadium 5 are just some of the high end materials used on the Euro17 Multitool that make this product the best.

Euro17 Multitool includes:

- Hex wrenches 2, 2.5, 3, 4, 5, 6, 8
- TX wrenches 10, 25
- PH1 screwdriver
- Flat screwdriver 1.0 x 5.0
- Chain tool
- Schrader & Presta valve tool
- Spoke Key 3.3, 3.45 and DT

SKU	ID
625901	1655EURO17-US



MULTITOOL EURO13

New Euro13 Multitool - Designed and produced in Slovenia, Europe, from the best materials to the highest standard. Tool spindles are chrome plated, additionally the tips are black oxide coated to ensure the highest tolerance and greater durability. Chrome vanadium 4, molybdenum vanadium 52, chrome-silicon-vanadium 5 are just some of the high end materials used on the Euro13 Multitool that make this product the best.

Euro13 Multitool includes:

- Hex wrenches 2, 2.5, 3, 4, 5, 6, 8
- TX wrenches 10, 25
- PH1 screwdriver
- Chain tool
- Schrader & Presta valve tool

SKU	ID
625902	1655EURO13-US



MULTITOOL EURO7

New Euro7 Multitool - Designed and produced in Slovenia, Europe, from the best materials to the highest standard. Tool spindles are chrome plated, additionally the tips are coated with black oxide coated to ensure the highest tolerance and greater durability. Chrome vanadium 4, molybdenum vanadium 52, chrome-silicon-vanadium 5 are just some of the high end materials used on the Euro7 Multitool that make this product the best.

Euro7 Multitool includes:

- Hex wrenches 1.5, 2, 2.5, 3, 4, 5, 6

SKU	ID
625903	1655EURO7-US



MULTITOOL EURO6

New Euro6 Multitool - Designed and produced in Slovenia, Europe, from the best materials to the highest standard. Tool spindles are chrome plated, additionally the tips black oxide coated to ensure the highest tolerance and greater durability. Chrome vanadium 4, molybdenum vanadium 52, chrome-silicon-vanadium 5 are just some of the high end materials used on the Euro6 Multitool that make this product the best.

Euro6 Multitool includes:

- Hex wrenches 4, 5, 6
- TX wrench 25
- PH1 screwdriver
- Flat screwdriver 1.0 x 5.0

SKU	ID
625904	1655EURO6-US





Y WRENCHES



Y HEX WRENCH

- The wrench is used for tightening and unscrewing screws with hex-shaped nuts.
- The plastic-injected handle offers a comfortable and compact grip, which enables efficient working while the high-quality material enables long-term use of the tool.

SKU	ID	DIM.
624908	1781/2HX-US	2x2,5x3
624909		4x5x6



THREE-LEGGED SOCKET WRENCH

Unior 1781/2 wrench has three most popular sockets for nuts and bolts sizes 8, 9 and 10mm. Ergonomic shape and ideal size make the tools useful for professional and amateur mechanics.

SKU	ID	DIM.
625008	1781/2-US	8x9x10



Y TORX WRENCH

- The wrench is used for tightening and unscrewing screws with Torx-shaped nuts.
- The plastic-injected handle offers a comfortable and compact grip, which enables efficient working while the high-quality material enables long-term use of the tool.

SKU	ID	DIM.
624911	1781/2TX-US	10 x 15 x 25



Y BALL-END HEX WRENCH

- The wrench is used for tightening and unscrewing screws with hex-shaped nuts.
- The plastic-injected handle offers a comfortable and compact grip, which enables efficient working while the high-quality material enables long-term use of the tool.
- The 1781/2HXS version features ball-end hex wrenches which are specially useful for working under angle.

SKU	ID	DIM.
624910	1781/2HXS-US	4x5x6





— HEX & TORX WRENCHES



T-HANDLE HEX WRENCH

- material: blade from premium chrome vanadium steel
- handle - polypropylene
- blade chrome plated, black anodised tip

SKU	ID	DIM.
625108	193HX-US	2
625109		2,5
625110		3
625111		4
625112		4,5
625113		5
625114		6
625115		8
625116	10	



T-HANDLE BALL-END HEX WRENCH

- material: blade from premium chrome vanadium steel
- handle - polypropylene
- blade chrome plated, black anodised tip

SKU	ID	DIM.
625117	193HXS-US	3
625118		4
625119		5



TX PROFILE SCREWDRIVER WITH T-HANDLE

- material: premium chrome vanadium steel
- handle - polypropylene
- blade chrome plated, black anodised tip

SKU	ID	DIM.
625711	193TX-US	TX 8
625121		TX 10
625122		TX 15
625712		TX 20
625123		TX 25
628632		TX 27
625124		TX 30



HEX SCREWDRIVER WITH INSULATED BLADE VDE TBI

- blade: premium hard chrome vanadium steel, entirely hardened and tempered
- blackened tip
- handle: ergonomic shape
- three component material
- hanging hole

SKU	ID	DIM.
616448	620VDETBI	2,5
616449		3
616450		4
616451		5
616452		6
616453		8



SCREWDRIVER WITH INSULATED BLADE VDE TBI WITH TX PROFILE

- blade: premium hard chrome vanadium steel, entirely hardened and tempered
- blacken tip
- handle: ergonomic shape
- three component material
- hanging hole

SKU	ID	DIM.
616454	621VDETBI	TX 10
616455		TX 15
616456		TX 20
616457		TX 25
616458		TX 27
616459		TX 30



SCREWDRIVER TBI WITH TX PROFILE AND HOLE

- blade: premium hard chrome vanadium steel, entirely hardened and tempered
- blade chrome plated, blackened tip
- handle: ergonomic shape
- three component material
- hanging hole

SKU	ID	DIM.
628279	621/1TBI-US	TR 10
628280		TR 15
628281		TR 20
628282		TR 25
628430		TR 27
628283		TR 30



SET OF WRENCHES WITH TX PROFILE AND HOLE IN PLASTIC CLIP

Set includes:

- 9x wrench with TX profile and hole (article 220/7TX) dim. TR8, TR9, TR10, TR15, TR20, TR25, TR27, TR30, TR40 on plastic clip

SKU	ID	DIM.
613089	220/7TXXPH	TR9-40/8



SET OF HEXAGON WRENCHES ON PLASTIC CLIP

Set includes:

- 9x hex wrench (article 220/3) dim. 1.5, 2, 2.5, 3, 4, 5, 6, 8, 10 on plastic clip

SKU	ID	DIM.
626768	220/3PH-US	1.5-10



SET OF BALL-END HEX WRENCHES ON PLASTIC CLIP

Set includes:

- 9x ball-end hex wrench (article 220/3S) dim. 1.5, 2, 2.5, 3, 4, 5, 6, 8, 10 on plastic clip

SKU	ID	DIM.
626769	220/3SPH-US	1.5-10



SET OF HEX WRENCHES, LONG TYPE ON PLASTIC CLIP

Set includes:

- 9x hex wrench, long type (article 220/3L) dim. 1.5, 2, 2.5, 3, 4, 5, 6, 8, 10 on plastic clip

SKU	ID	DIM.
626770	220/3LPH-US	1.5-10



SET OF BALL-END HEX WRENCHES, LONG TYPE ON PLASTIC CLIP

Set includes:

- 9x ball-end hex wrench, long type (article 220/3SL) dim. 1.5, 2, 2.5, 3, 4, 5, 6, 8, 10 on plastic clip

SKU	ID	DIM.
626771	220/3SLPH-US	1.5-10



HEX WRENCH

- material: premium chrome vanadium steel
- entirely hardened and tempered
- surface finish: nickel plated
- made according to standard ISO 2936 (only metric dimension)

SKU	ID	DIM.	
607823	220/3	1.5	
607824		2	
607825		2.5	
601036		3	
601037		4	
601038		5	
601040		6	
601041		7	
601042		8	
601044		10	
601045		12	
601046		14	
601047		17	
601048		19	
629440		220/3-SET	1.5, 2, 2.5, 3
629441			3/64", 1/20", 1/16"



HEX WRENCH, LONG TYPE

- material: premium chrome vanadium steel
- entirely hardened and tempered
- surface finish: nickel plated
- made according to standard ISO 2936 (only metric dimension)

SKU	ID	DIM.	
608510	220/3L	1.5	
608511		2	
608512		2.5	
608513		3	
608514		4	
608515		5	
608516		6	
608517		7	
608518		8	
608519		10	
608520		12	
608521		14	
608522		17	
608523		19	
629442		220/3L-SET	1.5, 2, 2.5, 3
629443			1/16", 5/64", 3/32", 1/8"



BALL-END HEX WRENCH

- material: premium chrome vanadium steel
- entirely hardened and tempered
- surface finish: nickel plated

SKU	ID	DIM.
607826	220/3S	1.5
607827		2
607828		2.5
607829		3
607830		4
607831		5
607832		6
607834		8
607835		10



BALL-END HEX WRENCH, LONG TYPE

- material: premium chrome vanadium steel
- entirely hardened and tempered
- surface finish: nickel plated

SKU	ID	DIM.
608524	220/3SL	1.5
608525		2
608526		2.5
608527		3
608528		4
608529		5
608530		6
608531		8
608532		10



WRENCH WITH TX PROFILE

- material: premium chrome vanadium steel
- entirely hardened and tempered
- surface finish: blacken to standard DIN 50938

SKU	ID	DIM.
616991	220/7TXN	TX 6
616992		TX 7
616993		TX 8
616994		TX 9
616995		TX 10
616996		TX 15
616997		TX 20
616998		TX 25
616999		TX 27
617000		TX 30
617001		TX 40
629447	220/7TXN-SET	TX 6, TX 7, TX 8, TX 9, TX 10, TX 15



WRENCH WITH TX PROFILE AND HOLE

- material: premium chrome vanadium steel
- entirely hardened and tempered
- surface finish: blacken to standard DIN 50938

SKU	ID	DIM.	
616296	220/7TX	TR 9	
609173		TR 10	
609174		TR 15	
609175		TR 20	
609176		TR 25	
609177		TR 27	
609178		TR 30	
609179		TR 40	
629446		220/7TX-SET	TR 9, TR 10, TR 15





— GENERAL SHOP TOOLS



OPEN END WRENCH

- material: premium chrome vanadium steel
- drop forged, entirely hardened and tempered
- surface finish: chrome plated according to ISO 1456:2009
- polished head
- made according to standard ISO 10102 (only metric dimension)
- head of the wrench under 15°

SKU	ID	DIM.
600061	110/1	6x7
600062		7x8
600064		8x9
600065		8x10
600066		9x10
600067		9x11
600068		10x11
600069		10x12
600070		10x13
600072		11x13
600074		12x13
600075		12x14
600076		13x14
600077		13x15
600078		13x17
600079		14x15
600080		14x17
600081		15x17
600082		16x17
600083		17x19
600084		17x22
600085		18x19
600086		19x22
600088		20x22
600089		21x23
600090		22x24
600091		22x27
600092		24x26
600093		24x27
600095	25x28	
600096	27x29	
600097	27x30	
600098	27x32	
600099	30x32	



COMBINATION WRENCH, SHORT TYPE

- material: premium chrome vanadium steel
- drop forged, entirely hardened and tempered
- surface finish: chrome plated according to ISO 1456:2009
- polished head
- ring part with LIFE profile
- made according to standard ISO 7738 (only metric dimension)
- made according to standard ISO 3318 in 3113A (only metric dimension)

SKU	ID	DIM.
600414	125/1	6
600415		7
600416		8
600417		9
600418		10
600419		11
600420		12
600421		13
600422		14
600423		15
600424		16
600425		17
600426		18
600427		19
600428		20
600429		21
600430		22
602089		23
602090		24
602091		25
602092		26
602093		27
602094		28
602095		29
602096		30
602097		32



SET OF OPEN END WRENCHES IN BAG

Set includes:

- 8x open end wrench (article 110/1) dim. 6x7, 8x9, 10x11, 12x13, 14x15, 16x17, 18x19, 20x22

SKU	ID	DIM.
615465	110/1CT	6-22/8



SET OF COMBINATION WRENCHES, SHORT TYPE IN BAG

Set includes:

- 8x short combination wrench (article 125/1) dim. 8, 10, 11, 13, 15, 17, 19, 22

SKU	ID	DIM.
615478	125/1CT	8-22/8



COMBINATION WRENCH IBEX

- material: premium chrome vanadium steel
- drop forged, entirely hardened and tempered
- surface finish: chrome plated according to ISO 1456:2009
- polished head
- ring part with LIFE profile

Advantages:

- The wrench acts on the flats to protect the corners of the nut
- 3 drive surface for greater power
- 100% positioning of the wrench
- rewind action without removing the wrench

SKU	ID	DIM.
611762	129/1	8
611763		10
611764		11
611765		12
611766		13
611767		14
611768		15
611769		16
611770		17
611930		18
611771		19
611772		22
611773		24



ADJUSTABLE WRENCH

- material: premium chrome vanadium steel
- drop forged, entirely hardened and tempered
- surface finish: chrome plated according to ISO 1456:2009
- polished head
- with scale
- made according to standard ISO 6787

SKU	ID	DIM.
611917	250/1	100
611918		150
601016		200



COMBINATION WRENCH, LONG TYPE

- material: premium chrome vanadium steel
- drop forged, entirely hardened and tempered
- surface finish: chrome plated according to ISO 1456:2009
- polished head
- ring part with LIFE profile
- made according to standard ISO 7738 (metric dimensions only)

SKU	ID	DIM.
600357	120/1	6
600358		7
600359		8
600360		9
600361		10
600362		11
600363		12
600364		13
600365		14
600366		15
600367		16
600368		17
600369		18
600370		19
600371		20
600372		21
600373		22
600375		24
600378	27	



RATCHET COMBINATION WRENCH

- material: premium chrome vanadium steel
- drop forged, entirely hardened and tempered

Advantages:

- ratchet: works both way, screw direction can be changed with button
- 72 - teeth, 5° working angle
- Stop ring on the ring part of the wrench prevents unexpected slip of the wrench from the nut and positioning back on the nut.
- It enables quick and easy tightening of the nut without causing damage to the user and quick, save and precise positioning of the wrench on the nut.

SKU	ID	DIM.
622818	160/2	8
622819		9
622820		10
622822		12
622823		13
622824		14
622825		15
622827		17
622829		19



REVERSIBLE RATCHET 1/4"

- material: premium flex chrome vanadium steel
- body drop forged
- entirely hardened and tempered
- surface finish: chrome plated to standard ISO 1456:2009
- ergonomic heavy duty double component handle
- made according to standard ISO 3315

Advantages:

- with 40 - teeth
- 9° working angle
- Safety lock system
- The socket is be released from the ratchet by simple pressing the button.

SKU	ID	DIM.
625106	188.1/1ABI-US	1/4"

1/4"



REVERSIBLE RATCHET

- material: premium flex chrome vanadium steel
- body drop forged
- entirely hardened and tempered
- surface finish: chrome plated to standard ISO 1456:2009
- ergonomic heavy duty double component handle
- made according to standard ISO 3315

Advantages:

- 75 - teeth
- 4,8° working angle
- Safety lock system
- The socket is be released from the ratchet by simple pressing the button.

SKU	ID	DIM.
625107	190.1/1ABI-US	1/2"
629378	238.1/1ABI-US	3/8" NEW



RATCHET FOR BITS 6,3

- material: premium flex chrome vanadium steel
- body drop forged
- entirely hardened and tempered
- surface finish: chrome plated to standard ISO 1456:2009
- ergonomic heavy duty double component handle
- for bits 6,3 mm

SKU	ID	DIM.
628277	188.1/1BBI-US	6,3mm



PRO SOCKET HANDLE

- material: premium flex chrome vanadium steel
- body drop forged
- entirely hardened and tempered
- surface finish: chrome plated to standard ISO 1456:2009
- ergonomic heavy duty double component handle
- Pro Socket Handle is not just another tool from our general tool program. It has been developed purposefully for our bike program. It is light, compact, extremely durable and features double component ergonomic handle. Designed to work with our cassette lock ring tools, flat sockets for suspension service and many more.

SKU	ID	DIM.
627085	190.8/2BI-US	1/2"



SWIVEL HANDLE 1/4"

SKU	ID	DIM.
628961	188.2/2BI-US	1/4"

1/4"



SWIVEL HANDLE 1/2"

- material: premium chrome vanadium steel
- body drop forged
- entirely hardened and tempered
- surface finish: chrome plated to standard ISO 1456:2009
- ergonomic heavy duty double component handle
- made according to standard ISO 3315

SKU	ID	DIM.
628645	190.2/1BI-US	1/2" x 450

1/2"



SLIDING T-HANDLE 3/8"

- material: premium flex chrome vanadium steel
- entirely hardened and tempered
- surface finish: chrome plated according to ISO 1456:2009
- polished head
- made according to standard ISO 3315

SKU	ID	DIM.
605341	238.3/1	3/8"

3/8"



SLIDING T - HANDLE 1/2"

- material: premium flex chrome vanadium steel
- entirely hardened and tempered
- surface finish: chrome plated according to ISO 1456:2009
- made according to standard ISO 3315

SKU	ID	DIM.
600876	190.3/1	1/2"

1/2"



BITS AND SOCKETS SET

- Unior's bits and sockets set for bicycle service includes all the necessary items for the most common service on a bicycle.
- Smaller sockets and bits are 1/4" while the bigger ones are 3/8".
- To ensure the use of all of them on any of the ratchet or torque wrench size, the set also includes two convert adaptors - to use 1/4" on a 3/8" and the other way around.
- All items can be used on a ratchet or a torque wrench.
- All the items in the set are nicely arranged inside the SOS foam tray.
- The set contains:
 - Torx bits sizes 25, 27 and 30
 - Hex bits sizes 3, 4, 5, 6, 8, 10
 - Socket sizes 8, 9, 10, 11, 12, 13, 14, 15
 - Adaptors 1/4" - 3/8" and 3/8" - 1/4"

SKU	ID
629380	1782



SOCKET SET 1/4" IN PLASTIC BOX

NEW

- Dimension of box: 244 x 207 x 59

Set includes:

- 11x socket 1/4", 6 point (article 188/2 6P) dim. 4, 4.5, 5, 5.5, 6, 7, 8, 9, 10, 11, 13
- accessories 1/4": 1x swivel handle, 1x sliding T - handle, 2x extension bar (55, 150mm)

SKU	ID
626780	188BI6P15-US

1/4"



HEX SOCKET 1/4"

- material: socket from premium flex chrome vanadium steel
- material: bit from premium plus carbon steel
- entirely hardened and tempered
- made according to standard DIN 7422 (only metric dimension)

SKU	ID	DIM.
625741	187/2HX	2,5
607898		3
607899		4
607900		5
607901		6
607902		7



SCREWDRIVER SOCKET WITH TX PROFILE 1/4"

- material: socket from premium flex chrome vanadium steel
- material: bit from premium plus carbon steel
- entirely hardened and tempered

SKU	ID	DIM.
607903	187/2TX	TX 8
607904		TX 10
607905		TX 15
607906		TX 20
607907		TX 25
607908		TX 27
607909		TX 30
607910		TX 40



HEX SCREWDRIVER SOCKET 3/8"

- material: socket from premium flex chrome vanadium steel
- material: bit from premium plus carbon steel
- entirely hardened and tempered
- made according to standard DIN 7422 (only metric dimension)

SKU	ID	DIM.
612082	236/2HX	4
612083		5
612084		6
612085		8
612086		10



HEX SOCKET 1/2"

- material: socket from premium flex chrome vanadium steel
- material: bit from premium plus carbon steel
- entirely hardened and tempered
- dimensions 17, 19, 22, 24 are used for the removal and fitting of front wheels
- made according to standard DIN 7422 (only metric dimension)

SKU	ID	DIM.
600978	192/2HX	4
603420		5
603421		6
603422		7
603423		8
605923		9
603424		10
603425		12
603426		14
624034		15
603427		17
603428		19



SOCKET 1/2", 6 POINT

- material: premium flex chrome vanadium steel
- drop forged, entirely hardened and tempered
- surface finish: chrome plated according to ISO 1456:2009
- polished
- made according to standard ISO 2725-1 (only metric dimension)
- made according to standard DIN 3124

SKU	ID	DIM.
605307	190/16P	8
610155		9
600851		10
600852		11
600853		12
600854		13
600855		14
600856		15
600857		16
600858		17
600859		18
600860		19
600861		20
600862		21
600863		22
600864		23
600865		24
600866		25
600867		26
600868		27
600869		28
610156		29
600871		30
600872		32



SOCKET 1/4", 6 POINT

- material: premium flex chrome vanadium steel
- drop forged, entirely hardened and tempered
- surface finish: chrome plated according to ISO 1456:2009
- made according to standard ISO 2725-1 (only metric dimension)

SKU	ID	DIM.
618682	188/26P	3.2
600815		4
600816		4.5
600817		5
600818		5.5
600819		6
600820		7
600821		8
600822		9
600823		10
600824		11
603130		12
600825		13
603131		14



ADAPTOR 1/4"

- material: premium flex chrome vanadium steel
- drop forged, entirely hardened and tempered
- surface finish: chrome plated according to ISO 1456:2009
- made according to standard ISO 3316

SKU	ID	DIM.
607976	188.7/2	1/4" - 3/8"



ADAPTOR 3/8"

- material: premium flex chrome vanadium steel
- drop forged, entirely hardened and tempered
- surface finish: chrome plated according to ISO 1456:2009
- polished head
- made according to standard ISO 3316
- code 605345 do not have polished heads

SKU	ID	DIM.
607977	238.7/1	3/8" - 1/4"



SOCKET WRENCH WITH T-HANDLE

- material: premium chrome vanadium steel
- handle - polypropylene
- surface finishing: blade chrome plated according to ISO 1456:2009

SKU	ID	DIM.
625120	193N-US	5,5



INSULATED SOCKET WRENCH WITH VDE TBI HANDLE

- blade: premium hard chrome vanadium steel, entirely hardened and tempered
- handle: ergonomic shape
- three component material
- hanging hole
- made according to standard DIN EN IEC 60900 (VDE 0682-201):2019-04; EN IEC 60900:2018
- made according to standard DIN 3125

SKU	ID	DIM.
616467	629VDEBTBI	8
616468		10



HEX SCREWDRIVER CR

- blade: premium hard chrome vanadium steel, entirely hardened and tempered
- blade: blackened
- handle: ergonomic shape
- handle - polypropylene
- hanging hole

SKU	ID	DIM.
617128	620/1CR	2
617129		2,5
617130		3



ELECTRICIAN'S SCREWDRIVER WITH INSULATED BLADE, VDE TBI

- blade: premium hard chrome vanadium steel, entirely hardened and tempered
- blackened tip
- handle: ergonomic shape
- three component material
- hanging hole
- made according to standard DIN EN IEC 60900 (VDE 0682-201):2019-04; EN IEC 60900:2018
- made according to standard ISO 8764-1,2

SKU	ID	DIM.
616436	603VDEBTBI	0.4 x 2.5 x 75
616437		0.5 x 3.0 x 100
616438		0.6 x 3.5 x 100
616439		0.8 x 4.0 x 100
616440		1.0 x 5.5 x 125
616441		1.2 x 6.5 x 150



CROSSTIP (PH) SCREWDRIVER WITH INSULATED BLADE, VDE TBI

- blade: premium hard chrome vanadium steel, entirely hardened and tempered
- blackened tip
- handle: ergonomic shape
- three component material
- hanging hole
- made according to standard ISO 8764-1,2 and EN IEC 60900

SKU	ID	DIM.
616443	613VDEBTBI	PH0 x 60
616444		PH1 x 80
616445		PH2 x 100



DEAD BLOW HAMMER

- metal balls in the head absorb the impact
- those granulate absorb the impact
- lacquered metal housing
- lacquered metal tubular handle with plastic grip
- polyurethane faces are unchangeable
- high security

Advantages:

- Advantage over an ordinary hammer is that it doesn't bounce back from the object because of the steel granulate which absorb the impact.
- Steel balls in the hammer head prevents rebound and adds additional striking force.
- Less handle vibration while striking!

Usage:

- Hammer is used for mounting ball bearings, for furniture assembly, interior and exterior lay paving.
- Not recommended for use on sharp objects. Strike on sharp objects can damage polyurethane face of the hammer.

SKU	ID	DIM.
626485	819A-US	45



PLASTIC HAMMER

- material: cellidor, hardness 60-70 shore D
- oil resistant
- grey cast head
- wooden handle, lacquered
- intended for working soft and easily damaged materials

SKU	ID	DIM.
601834	820	32



PLASTIC HAMMER

- material: polyuretan, hardness 45 - 55 shore D
- oil resistant
- grey cast head
- wooden handle, lacquered
- very tough and unbreakable material that allows versatility of use

SKU	ID	DIM.
605492		27
605493	820A	32
605494		40



LOCKSMITHS' HAMMER

- material: premium flex plus carbon steel
- drop forged
- striking face and nose induction hardened
- surface finish: lacquered
- ash wood handle with special oval wedge
- made according to standard DIN 1041

SKU	ID	DIM.
601797		150
601799	812	200
601801		250



HACKSAW

- light compact with ergonomically designed handle
- frame chrome plated, handle lacquered
- two blade position

SKU	ID	DIM.
621531	750B	400 mm



CARBON SAW BLADE FOR 750B, 2 PCS SET

SKU	ID	DIM.
623099	750.1CAR	300 mm



SPARE BLADE FOR 750B, 2 PCS SET

- material: HSS, Bi-metal
- 24 teeth/1"
- length 300 mm

SKU	ID	DIM.
621532	750.1B	300 mm



ROUND FILE WITH HANDLE, BASTARD

- material: premium hard plus carbon steel
- all files have second cut
- hanging hole

SKU	ID	DIM.
625714	763HB-US	375 mm



FLAT FILE WITH HANDLE, BASTARD

- material: premium hard plus carbon steel
- all files have second cut
- hanging hole

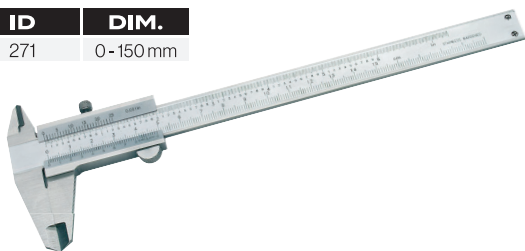
SKU	ID	DIM.
625715	760HB-US	325 mm



CALLIPER WITH VERNIER SCALE

- accuracy: 0,02mm/0,001"
- function: measurement of internal dimensions, of external dimensions, of depth, of steps
- made according to standard DIN 862
- dual scale in inch and mm

SKU	ID	DIM.
612035	271	0-150 mm



DIGITAL CALLIPER

- accuracy: 0,02mm/0,001"
- function: measurement of internal dimensions, of external dimensions, of depth, of steps
- made according to standard DIN 862
- dual scale in inch and mm

SKU	ID	DIM.
619881	270A	0-150 mm



ELECTRICIANS' SCISSORS

- material: premium flex plus carbon steel
- drop forged
- cutting edges induction hardened
- surface finish: nickel plated
- handles plastic dipped

SKU	ID	DIM.
628278	582/3P-US	150



MAGNETIC TRAY

- Material: stainless steel, corrosion resistant
- keeps parts and tools right where you need them
- holds any small nuts, bolts and steel parts

Advantages:

- powerful permanent magnet covers with protective rubber foot
- can be used in any position

How to use the tool:

- With its powerful rubber-protected magnet, this magnetic tray is suitable for practically all industrial applications ranging from car repair shops to everywhere where it can be attached to a metal surface. It can be used in all positions - the magnet is so powerful that the tray can even be fitted upside-down. The tray is intended for protecting screws, nuts and the like against being misplaced, and for storing them in a central location to minimise the time needed to find a specific item.
- for usage in garage, engine, household work



MEASURING TAPE

- plastic double component casing
- with stop and clip
- preciseness to class II
- metal measuring tape

SKU	ID	DIM.
625129	710R-US	3m



PIN SET 2 PIECES FOR 253/2DP

SKU	ID	DIM.
621020	253.1/4A	2,3 x 2,8



ADJUSTABLE SPANNER WRENCH

- material: premium flex plus carbon steel
- pins: black finish
- entirely hardened and tempered
- surface finish: chrome plated according to ISO 1456:2009
- double plastic dipped handles
- The 2.3 and 2.8 mm pins are interchangeable, the distance between them is adjustable. The biggest difference between the pins is 50 mm open and 10 mm closed.

SKU	ID	DIM.
624933	253/2DP-US	2,3 x 2,8



QUICK IRONGATOR ENGINEER'S VICE WITH QUICK MOVING SYSTEM

- housing from grey iron casting
- drop forged jaws from tool carbon steel, hardened and tempered
- lacquered housing, jaws anticorrosive oiled, other parts zinc plated
- uniPRO slides ensure precise running of moving parts
- engineer's vice can be combined with swivel base
- quick moving system

SKU	ID	DIM.
625130	721Q/6-US	125
625131		150

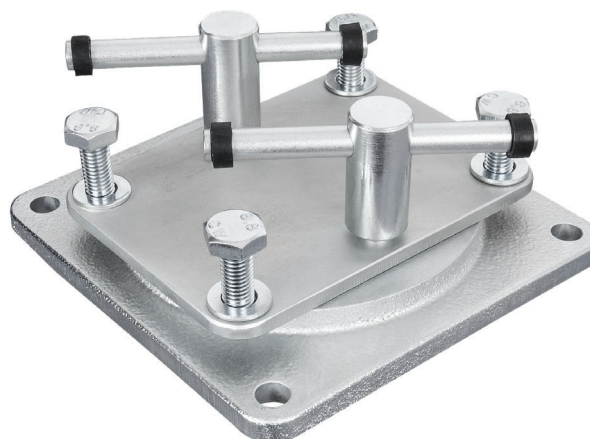
↔



SWIVEL BASE FOR 721/6 AND 721Q/6

- base plate from grey iron casting
- material other parts: special tool steel
- swivel base can be rotated for 360°

SKU	ID	DIM.
621566	721.1/6	80
621483		125
621569		150
621572		200



SPARE JAW FOR 721/6 AND 721Q/6

- material: premium plus carbon steel
- drop forged, entirely hardened and tempered
- set 2 pieces

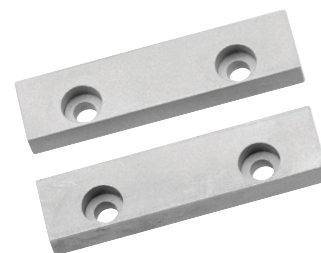
SKU	ID	DIM.
623083	722.1/7	80
619020		125
619021		150
619023		200



SPARE ALUMINIUM JAWS FOR 721/6 AND 721Q/6

- material: aluminium
- set 2 pieces

SKU	ID	DIM.
623084	722.1AL	80
619026		125
619027		150
619029		200





— PLIERS



SCREW PLIERS

- material: premium plus carbon steel
- drop forged, entirely hardened and tempered
- head surface finish: finely ground
- surface finish: phosphated to standard ISO 9717
- double plastic dipped handles

Advantages:

- double serrated jaws, horizontal and vertical
- multipurpose use
- for screws head with diameter from 3 to 11 mm

Use Screw pliers to loose and unscrew screws that have damaged head profile and cannot be unscrewed with standard tools. Damage on the screw's profile usually occurs when screws are stuck due to gluing or corrosion and standard tool strips the profile. Pliers have horizontal and also vertical serrated teeth, which grab the screw by the outer diameter of the head. Teeth are strong and very sharp and provide excellent grip on screw's head, regardless of its profile. Pliers can be used on screw heads with diameter from 3 to 11 mm.

SKU	ID	DIM.
629036	407/4DP-US	170

  | $\text{Ø } 3 \sim \text{Ø } 11\text{r}$



CABLE HOUSING CUTTERS

- Pliers developed specially for cutting shift and brake housing. Pliers cut precise and smooth without deformation to the cable housing and feature a built-in crimping function for cable end caps. Locking mechanism keeps pliers closed for the easier storing. To unlock the locking mechanism simply squeeze and release the pliers.
- In order to preserve the ultimate cutting performance, we highly advise not to use pliers for cutting shift/brake wires and spokes.

SKU	ID	DIM.
628148	584/4BI-US	180



FLUSH CUTTER

NEW

- material: premium plus carbon steel
- drop forged, entirely hardened and tempered
- cutting edges induction hardened
- heavy duty double-component handles

SKU	ID	DIM.
626381	463/4BI-US	2.9/16"



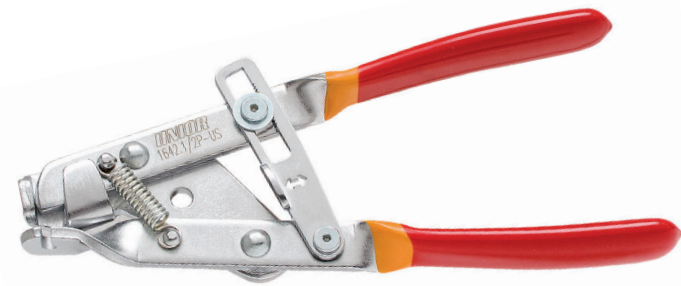
CABLE PULLER PLIERS WITH LOCK

- material: premium plus carbon steel
- surface finish: chrome plated according to ISO 1456:2009
- double plastic dipped handles

How to use the tool:

- The basic function of the inner wire pliers is to tension brake and derailleur steel cables. It is used for holding the inner cable and pulling it out of the housing. The safety lock is activated with a thumb push. The pliers can now be released and the cable fixed. The lock is automatically released by squeezing handles together. The additional safety lock enables easier, faster and more comfortable use.

SKU	ID	DIM.
624917	1642.1/2P-US	185



MASTER LINK PLIERS

NEW

- Master link pliers are designed for installation and removal of the chain master links on most 6 – 13 speed derailleur chains, including Sram flat top chains.
- Laser cut and heat treated.
- Features dual-function jaws capable of both opening and closing master links.
- Compatible with 6 – 13 speed derailleur chains, including Sram flat top chains.
- Equipped with double-dipped handles for enhanced comfort.
- material: premium flex plus carbon steel
- surface finish: chrome plated to standard ISO 1456:2009

SKU	ID
629366	1720/4DP



WATERPUMP BOX JOINT PLIERS

- material: premium chrome vanadium steel
- drop forged, entirely hardened and tempered
- surface finish: chrome plated to standard ISO 1456:2009
- heavy duty double - component handles

Advantages:

- jaw aperture adjustable in 7 positions
- jaws are always parallel to protect the nut from being damaged
- 449.1 additional plastic jaws for work on chromed and polished nuts

SKU	ID	DIM.
625713	449/1PYTHON-US	240



LONG NOSE PLIERS WITH SIDE CUTTER AND PIPE GRIP, BENT

- material: premium plus carbon steel
- drop forged, entirely hardened and tempered
- cutting edges induction hardened
- head polished
- surface finish: chrome plated to standard ISO 1456:2009
- heavy duty double - component handles
- made according to standard ISO 5745 and EN IEC 60900

Advantages:

- the long bent jaws enable simple and precise clenching of nuts and screws
- the strong jaws enable good grip
- jaws bent to an angle of 45°
- gripping surface serrated

SKU	ID	DIM.
610438	512/1VDEBI	170
610439		200



TIRE SETTER

- material: premium plus carbon steel
- drop forged, entirely hardened and tempered
- surface finish: chrome plated to standard ISO 1456:2009
- double plastic dipped handles
-

The pliers are intended for fast straightforward tire removal - especially tires that have already bonded with the rim. Using the pliers, we compress the tire so that it detaches from the bead of the rim. A strong grip facilitates the removal of the tires. The well designed shape of the pliers enables the separation of the tire from the rim and ensures that the inner tube is not punctured when removing the tire. The pliers are chromed and laminated with plastic for a more comfortable grip.

SKU	ID	DIM.
624948	1601/2DP-US	300



DIAGONAL CUTTING NIPPERS

- material: premium plus carbon steel
- drop forged, entirely hardened and tempered
- cutting edges induction hardened
- head polished
- surface finish: chrome plated to standard ISO 1456:2009
- heavy duty double - component handles
- made according to standard ISO 5749 and EN IEC 60900

SKU	ID	DIM.
610426	461/1VDEBI	140
610427		160



COMBINATION PLIERS

- material: premium plus carbon steel
- drop forged, entirely hardened and tempered
- cutting edges induction hardened
- head polished
- surface finish: chrome plated to standard ISO 1456:2009
- heavy duty double - component handles
- made according to standard ISO 5746 and EN IEC 60900

SKU	ID	DIM.
610421	406/1VDEBI	160
610422		180
610423		200
610424		220



LONG FLAT NOSE PLIERS

- material: premium plus carbon steel
- drop forged, entirely hardened and tempered
- head polished
- surface finish: chrome plated to standard ISO 1456:2009
- heavy duty double - component handles
- gripping surface serrated
- made according to standard ISO 5745 and EN IEC 60900

SKU	ID	DIM.
610430	472/1VDEBI	160

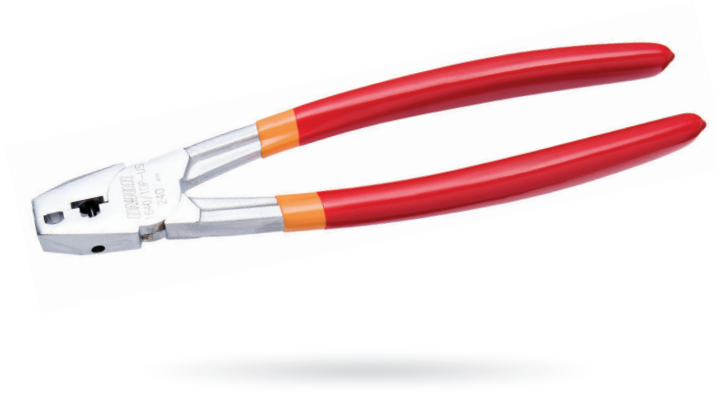


CHAIN RIVET PLIERS

- material: premium flex plus carbon steel
- drop forged, entirely hardened and tempered
- surface finish: chrome plated according to ISO 1456:2009
- pin induction hardened
- double plastic dipped handles

The chain rivet pliers have been developed to enable both professional and home mechanics to work quickly and safely on bicycle chains. Higher functionality and practicality are the advantages of the chain rivet pliers and with this unique design less physical effort is required to extract the rivet from the chain. Jobs will be performed quickly and comfortably without damage to the rivet or chain plate. The ergonomic design enables single handed use.

SKU	ID	DIM.
624914	1640/1DP-US	240



LONG NOSE PLIERS WITH SIDE CUTTER AND PIPE GRIP, STRAIGHT

- material: premium plus carbon steel
- drop forged, entirely hardened and tempered
- cutting edges induction hardened
- head polished
- surface finish: chrome plated to standard ISO 1456:2009
- heavy duty double - component handles
- made according to standard ISO 5745 and ENIEC 60900

Advantages:

- also for clenching and separating of from cables and other sensitive objects
- gripping surface serrated

SKU	ID	DIM.
610436	508/1VDEBI	170



PLASTIC JAW FOR 449/1PYTHON

SKU	ID	DIM.
615033	449.1	240



REPLACEABLE PIN FOR CHAIN RIVET PLIERS

- material: premium flex plus carbon steel
- surface finish: blacken to standard DIN 50938
- pin induction hardened

SKU	ID
605956	1640.1/4



EXTERNAL LOCK RINGS PLIERS, STRAIGHT

- material: premium plus carbon steel
- drop forged, entirely hardened and tempered
- head polished
- surface finish: chrome plated according to ISO 1456:2009
- tips black finish
- double plastic dipped handles
- made according to standard DIN 5254 form A

Advantages:

- 30% higher endurance in comparison to convenient lock rings pliers
- with inserted tips
- for diameter 3 to 100mm

Usage:

- for fitting circlips on shafts

SKU	ID	DIM.
625125	532PLUS/1DP-US	140 x (3-10)



EXTERNAL LOCK RINGS PLIERS, BENT

- material: premium plus carbon steel
- drop forged, entirely hardened and tempered
- head polished
- surface finish: chrome plated to standard ISO 1456:2009
- tips black finish
- made according to standard DIN 5254 form B
- double plastic dipped handles

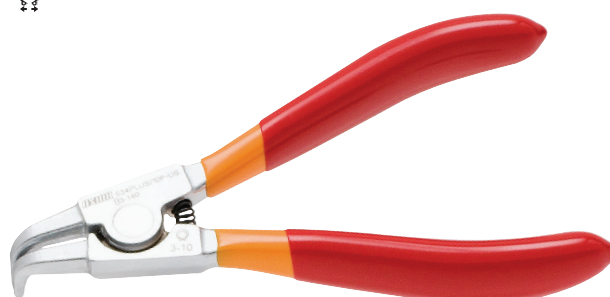
Advantages:

- 30% higher endurance in comparison to convenient lock rings pliers
- with inserted tips
- for diameter 3 to 100mm

Usage:

- for fitting circlips on shafts

SKU	ID	DIM.
625126	534PLUS/1DP-US	140 x (3-10)



INTERNAL LOCK RINGS PLIERS, STRAIGHT

- material: premium plus carbon steel
- drop forged, entirely hardened and tempered
- head polished
- surface finish: chrome plated according to ISO 1456:2009
- tips black finish
- double plastic dipped handles
- made according to standard DIN 5256 form C

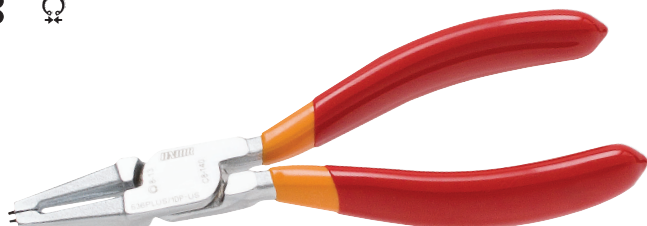
Advantages:

- 30% higher endurance in comparison to convenient lock rings pliers
- with inserted tips
- for diameter 8 to 100mm

Usage:

- for fitting circlips on bore holes

SKU	ID	DIM.
625127	536PLUS/1DP-US	140 (8-13mm)



INTERNAL LOCK RINGS PLIERS, BENT

- material: premium plus carbon steel
- drop forged, entirely hardened and tempered
- head polished
- surface finish: chrome plated to standard ISO 1456:2009
- tips black finish
- double plastic dipped handles
- made according to standard DIN 5256 form D

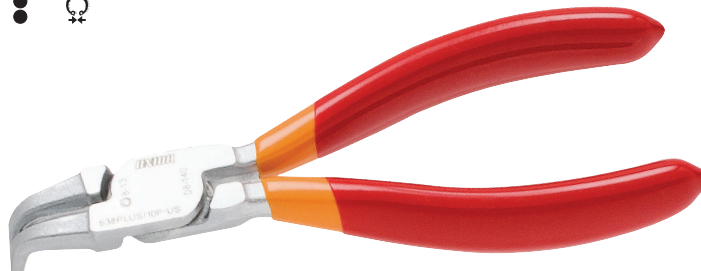
Advantages:

- 30% higher endurance in comparison to convenient lock rings pliers
- for diameter 8 to 100mm
- with inserted tips

Usage:

- for fitting circlips on bore holes

SKU	ID	DIM.
625128	538PLUS/1DP-US	140 (8-13mm)





TORQUE WRENCH & ACCESSORIES



CLICK TYPE TORQUE WRENCH

- reversible ratchet head
- Torque application: one-way, but always apply in direction specified on torque wrench handle
- ratchet operates in clockwise and anti-clockwise directions
- for tightening on right hand threaded bolts and nuts
- unmistakable signal when set torque is reached
- Default value for the recalibration interval is 12 month of use, or approximately 5.000 cycles!
- made according to standard ISO 6789
- dual scaled, Nm and Kgm

Important!

- Do not use torque wrench for untightening!
- Torque tightens only in the direction showed on the key sticker! Sticker shows the proper direction of tightening!
- The default calibration interval of the torque wrench is 12 months or 5.000 measurements from the date of end user purchase.
- ALWAYS set the measuring mechanism to starting point, at the end of work.
- When the requested torque is reached, please do not tight any more.
- Torque wrench can be damaged, if manual instructions are not considered.

SKU	ID	DIM.
615485	264	1/4" x 2 - 24
615486		3/8" x 5 - 110



ELECTRONIC TORQUE WRENCH

Torque wrench specially designed for work on bikes. Both versions in a size to best fit the intended use, precise and easy to use. Smaller version features a 1/4" square drive and will allow you to work on even the most hidden bolts with low torque values. Bigger version features 1/2" square drive and will accept all our bottom bracket sockets, suspension top cap sockets and cassette lock rings without any adaptors.

- antislip handle
- target torque warning: buzzer + 2 LED lights
- operation mode: peak hold / track
- unit selection: N-m, in-lb, ft-lb, kg-cm
- gear teth: 60
- battery: 1xAAA (not included), compatible with rechargeable battery
- warranty: 10.000 cycle / one year
- auto power off after 5 min

SKU	ID	DIM.	TORQUE	ACCURACY
627784	266B	1/4"	1-20Nm	CW: +/- 3% CCW: +/- 4%
627785		1/2"	4,3-85Nm	CW: +/- 3% CCW: +/- 4%



BITS AND SOCKETS SET

- Unior's bits and sockets set for bicycle service includes all the necessary items for the most common service on a bicycle.
- Smaller sockets and bits are 1/4" while the bigger ones are 3/8".
- To ensure the use of all of them on any of the ratchet or torque wrench size, the set also includes two convert adaptors - to use 1/4" on a 3/8" and the other way around.
- All items can be used on a ratchet or a torque wrench.
- All the items in the set are nicely arranged inside the SOS foam tray.
- The set contains:
 - Torx bits sizes 25, 27 and 30
 - Hex bits sizes 3, 4, 5, 6, 8, 10
 - Socket sizes 8, 9, 10, 11, 12, 13, 14, 15
 - Adaptors 1/4" - 3/8" and 3/8" - 1/4"

SKU	ID
629380	1782





— **BOTTOM BRACKET TOOLS** —



BOTTOM BRACKET WRENCH 12 NOTCH

NEW

- Bottom bracket wrench is used to install or remove external Praxis Works M30 external bottom bracket cups and all other bottom brackets with notch diameter of approximately 46.3. The ½" square on the body of the tool allows for the use of torque wrench.
- material: premium flex plus carbon steel
- surface finish: chrome plated according to ISO 1456:2009
- ergonomic heavy duty double component handle
- Substitute for Praxis Works wrench TP-0330

SKU	ID	DIM.
629501	1671.9/2DP	323



BOTTOM BRACKET WRENCH 16 NOTCH

- material: premium flex plus carbon steel
- surface finish: chrome plated according to ISO 1456:2009
- ergonomic heavy duty double component handle

The wrench is used to remove and install Shimano® Hollowtech II, Campagnolo® Ultra-Torque and Power Torque, Race Face®, FSA®, SRAM®, Truvativ®, Chris King® bottom brackets as well as many and others. Small wrench is included for removal and installation of Shimano plastic bolts that are used on the Hollowtech II cranksets. The 1609/2BI wrench also fits on the external centerlock disc nut.

SKU	ID	DIM.
624903	1609/2BI-US	350



BOTTOM BRACKET SOCKET

All models of bottom bracket sockets are precision CNC machined tools for installation and removal of different external bottom bracket cups. They are made of aluminum billet and anodized red for durable finish and precise fit, that won't damage aluminum external bottom bracket cups.

Knurling on the side of the socket creates better grip when threading cups by hand, meanwhile 1/2" square drive makes it easy to use with torque wrenches, ratchets and fixed handles.

BB9000



SKU	ID
627619	1671.BB9000

BBR60



SKU	ID
627620	1671.BBR60

BSA30



SKU	ID
627621	1671.BSA30

MegaEVO



SKU	ID
627622	1671.MEVO

16 Notch



SKU	ID
627623	1671.16N

T47



SKU	ID
628495	1671.T47

NEW

E13



SKU	ID
629358	1671.E13

NEW

HOPE

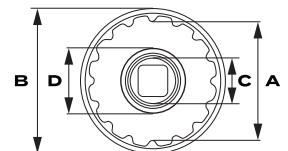


SKU	ID
629359	1671.HP

BOTTOM BRACKET		UNIOR TOOL							
MANUFACTURER	MODEL	BB9000	BBR60	BSA30	MegaEVO	16Notch	T47	E13	HOPE
Campagnolo	Fits most models					X			
Chris King	Fits most models					X			
Chris King	Thread fit T47 30I & 24I						X		
Chris King	Thread fit T47 30X & 24X						X		
Enduro	T47 with OD 52.2 mm						X		
Enduro	TorqueTite PF30 with OD 52.2 mm						X		
FSA	MegaEvo				X				
FSA	MegaEvo					X			
Praxis	T47*						X		
Race Face	Cinch			X					
Race Face	X-Type					X			
Rotor	BSA30			X					
Shimano	BBR60		X						
Shimano	Dura-Ace 9000	X							
Shimano	Hollowtech II					X			
Shimano	MT60		X						
Shimano	XTR BB93	X							
SRAM	DUB T47						X		
SRAM	DUB			X					
SRAM / Truvativ	GXP					X			
Zipp	Vuma			X					
Hawk Racing	BB3086			X					
Wheels Mfg	PF30				X				
Wheels Mfg	T47						X		
Hope	30 Threaded								X
E13	Threaded							X	

* 1671.T47 is not compatible with Praxis T47 GXP non drive side cup.

A = Notch diameter
 B = Socket diameter
 C = Guide diameter
 D = Guide adapter diameter



UNIOR BOTTOM BRACKET SOCKETS SPECIFICATIONS

TOOL	# NOTCHES	NOTCH DIAMETER	SOCKET DIAMETER	GUIDE DIAMETER	GUIDE ADAPTER DIA.
BSA30	12	44,2	53	/	/
BBR60	16	39	47	/	/
BB9000	16	39,4	45	/	/
MegaEVO	16	46,4	56	/	/
16 Notch	16	42,7	52	/	/
T47	16	49	60	23,8	28,8
T47	12	46,6	60	23,8	29,8*
E13	6	49,5	54,5	/	/
HOPE	16	47,6	55	/	/

* Adapter is exchangable and can be used on both sides.

CRANK CAP TOOL METAL

- Strong magnet in the back of the wrench, enables the tool to be stored on a convenient place.
- Tool can be used by hand or with help of wrench size 13 mm.

Tool is used for removal and installation of Shimano plastic bolts that are used on the Hollowtech II cranksets.

SKU	ID
623120	1609.1/2



CRANK CAP TOOL

Works on Shimano Hollowtech II cranks.

Tool is used for removal and installation of Shimano plastic bolts that are used on the Hollowtech II cranksets.

The tool can be used by hand or with the 8 mm hex wrench.

SKU	ID
627017	1609.1



OPEN BOTTOM BRACKET WRENCH 16 NOTCH

- material: premium flex plus carbon steel
- surface finish: chrome plated according to ISO 1456:2009
- Tool also fits the disc brake rotor nuts with 16 external notches.

The open bottom bracket wrench is used to remove and install Shimano® Hollowtech II, Campagnolo® Ultra-Torque and Power Torque, Race Face®, FSA®, SRAM®, Truvativ®, Chris King® bottom brackets as well as many and others. The 1609/2HOBBY wrench also fits on the external centerlock disc nut.

SKU	ID
624935	1609/2HOBBY-US



BOTTOM BRACKET WRENCH BSA30

- The tool has a professional double injected plastic handle, which enables strong grip and great comfort.

Wrench is used to install or remove BSA30 external cups. Can also be used with a 1/2" torque wrench.

Unior's BSA30 bottom bracket wrench works on the new BSA30 standard bottom brackets which you can find on Rotor®, DUB, Zipp® and RaceFace® systems.

SKU	ID
628596	2620/2BI-US



CARTRIDGE BOTTOM BRACKET WRENCH

- material: premium flex plus carbon steel
- ergonomic heavy duty double component handle
- It is composed of wrench, product no. 1671.1, screw with nut and handle.
- The double threaded screw enables you to use this tool for Shimano standard bottom brackets as well as for Shimano Octalink and Truvativ bottom brackets.

How to use the tool:

- This tool allows you to thread the wrench into the axle with the additional screw. This prevents the wrench from slipping and damaging the bottom bracket nut. Work is made easy by the 350 mm long handle with the two part ergonomic sleeve. The same procedure can be used for installation. The screw is 24 mm AF and is used with a 24 mm wrench or with a torque wrench. The handle can be taken down if necessary.

SKU	ID
624919	1671.8/2BI-US



ADJUSTABLE CUP WRENCH, FOR OLDER BOTTOM BRACKET MODELS

- material: premium flex plus carbon steel

The wrench is used for installing and removing of older bottom brackets. The wrench fits perfectly in the hand while the slim body and gap form enable quick and efficient installation and removal of older types of bottom brackets. The length of the wrench is 204 mm.

SKU	ID
618414	1672/2



CAMPAGNOLO POWER AND ULTRA TORQUE FULL SET, ALSO FOR FULCRUM ULTRA TORQUE

This full set includes complete crank and bearing removal and installation tools for Campagnolo® and Fulcrum® Ultra Torque crank sets as well as for Campagnolo® Power Torque system.

SKU	ID
623207	1626A



BOTTOM BRACKET SHELL INSTALLATION TOOL

- material: premium flex plus carbon steel
- surface finish: blacken to standard DIN 50938

This tool is used for the installation and removal 35.8 mm and 36.3 mm bottom bracket shell. It is made of precision tool steel with heat treatment and surface protection. The advantage of the tool is that it prevents slipping off the shell.

SKU	ID
616293	1607/4



SPARE HEAD FOR 1607/4

SKU	ID
623383	1607/4



CARTRIDGE BOTTOM BRACKET TOOL 8 TOOTH

- material: premium flex plus carbon steel
- 1/2" square drive makes it easy to use with ratchets, fixed handles and torque wrenches

Compatible with:

- Shimano Octalink® bottom brackets with outside notches, Bontrager® and Truvativ® ISIS Drive® type bottom brackets
- Bosch® Generation 3 and Generation 4 E-bike system front chainring locking

SKU	ID
616069	1671.2/4



CARTRIDGE BOTTOM BRACKET TOOL 20 TOOTH

- material: premium flex plus carbon steel
- For: Shimano®, ISIS®

How to use the tool:

Use it together with the Unior 1/2" ratchet 190.1ABI

SKU	ID
616068	1671.1/4



BB90 REMOVAL TOOL

This tool is designed to remove the non-threaded bottom bracket bearings and cups of the BB90 bottom bracket system. It also supports other press fit standards with 24mm spindle, such as BB86, BB92, SRAM Press Fit GXP. The removal tool will pull the bearings & cup from the frame. Carefully insert the guide head of removal tool through the bottom bracket cup (marked green).

SKU	ID
623085	1625/2BB90



BB30 & DUB REMOVAL TOOL

The tool is designed to remove the non-threaded BB30 & Sram DUB bottom brackets from the frame. The tool safely pulls bottom bracket cups out of the frame without the use of a hammer. It features two interchangeable dedicated pullers, a 30mm puller for BB30 standard and 29mm puller for Sram DUB press fit bottom brackets. When using the tool with a 30mm puller, the tool is also compatible with many other bottom bracket standards using bearings with 30mm internal diameter. The rubber O-ring on the tool ensure the safe usage of the tool keeps the frame getting scratched.

SKU	ID
626282	1625/2





— CRANKSET TOOLS



CRANK PULLER WITH HANDLE

The crank puller is used for removing Shimano Octalink and ISIS cranks as well as for standard square spindle cranks. A strong handle enables quick and easy use. The product enables optimal efficiency and is suitable for both professionals and home users.

SKU	ID
624918	1661.3/4DP-US



CRANK PULLER FOR SHIMANO® XTR FC-M970

- material: premium flex plus carbon steel

How to use the tool:

The crank puller is used for removing XTR FC-M970 cranks. To use, remove the plastic ring on the outside of the crank by using four pins on the left puller side. Unthread the nut on the inner crank side with the plastic clamp. Thread the puller with its right side into the crank and use a hex wrench to unthread the nut holding the crank. Now thread the puller, attached with its inner side to the crank nut until it is released from the crank. The product enables optimal efficiency and is suitable for both professionals and enthusiast mechanics.

SKU	ID
619710	1664



CRANK PULLER

- material: premium flex plus carbon steel
- drop forged, entirely hardened and tempered
- Surface finish: blacken

The crank puller is designed to remove standard square spindle cranks. With help of the included adaptor other standards such as ISIS and Octalink cranks can also be removed.

SKU	ID
615529	1661/4



TAPERED CRANK PULLER

- material: premium flex plus carbon steel

This crank puller is used to remove cranks with damaged inner threads when the crank cannot be removed with a normal crank puller.

SKU	ID
619707	1662/4



RATCHET WRENCH

- material: premium flex plus carbon steel
- ergonomic heavy duty double component handle
- 75 - teeth
- Interchangeable sockets: 14 mm and 15 mm

The design of the Unior ratcheting hub nut wrench enables working in hard to reach places. New shape enables higher torque, reduces physical effort and ensures a longer working life of the tool. Maximum torque is assured by the shape of the handle. The perfect ergonomic fit to the hand makes it easy and comfortable to work with.

SKU	ID	DIM.
624942	1621/1BI-US	14 x 15



RATCHET WRENCH

- material: premium flex plus carbon steel
- 75 - teeth
- ergonomic heavy duty double component handle

The ratchet has an interchangeable HX8mm screwdriver socket and 14mm socket. Both are used for crank nuts.

SKU	ID	DIM.
624943	1621/1ABI-US	14 x 8



CHAINRING NUT WRENCH

- material: premium flex plus carbon steel
- surface finish: chrome plated according to ISO 1456:2009
- The dimension of the hexagonal key opening is SW10. It enables unscrewing and tightening of nuts of this dimension, while at the same time it can be used to hang the key.

The wrench is used for unscrewing and tightening of front chain ring nuts. The tightening starts with the broader part, and when the nut is sufficiently tightened, it finishes with the narrower part which is bent in order to enable more secure power transfer during the final tightening of the nut. When unscrewing the nut, the key is used in the reverse order.

SKU	ID
618415	1668/2



CHAIN RING TRUING FORK

- material: premium flex plus carbon steel

The tool is used for repairing minor damage on the front chain rings. The narrow opening is intended for truing a tooth, the broader for truing the crank spider.

SKU	ID
619704	1667/2

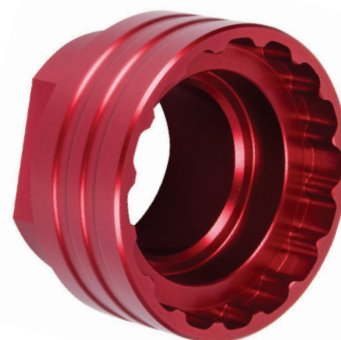


SHIMANO DIRECT MOUNT LOCKRING TOOL

NEW

- Compatible with all Shimano direct mount style cranks series M9100, M8100, M7100 and M6100.
- Replacement for Shimano TL-FC41.
- Made from aluminum, CNC machined, red anodized.
- Being compatible with our 1725/CF Crowfoot and 1/2" drive torque wrench it's designed to work as specified by Shimano.

SKU	ID	DIM.
626643	1723.SDL	SK





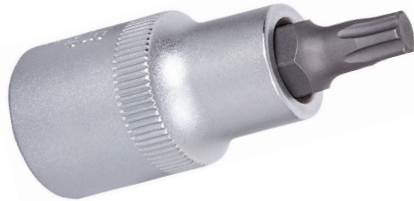
E-BIKE TOOLS



SCREWDRIVER SOCKET 1/2" WITH TX PLUS PROFILE

- 1/2" Socket Torx Plus® T40 for Bosch Gen4 motor units.
- Use with any 1/2" socket such as our Pro Socket Handle or torque wrench.

SKU	ID	DIM.
629138	192/2TXP	IP 40



NEW

CROWFOOT OPEN END WRENCH

NEW

- Size 32 fits flats on 1724.SSL and 1723.SDM, to tighten components to the correct torque spec.
- Size 36 fits flats on 1671.E13, to tighten components to the correct torque spec.

Important!

For proper torque readings the opening of the crow foot should be aligned perpendicular to the torque wrench.

SKU	ID	DIM.
626645	1725/2CF	32
629360		36



CARTRIDGE BOTTOM BRACKET TOOL 8 TOOTH

- material: premium flex plus carbon steel
- 1/2" square drive makes it easy to use with ratchets, fixed handles and torque wrenches

Compatible with:

- Shimano Octalink® bottom brackets with outside notches, Bontrager® and Truvativ® ISIS Drive® type bottom brackets
- Bosch® Generation 3 and Generation 4 E-bike system front chainring locking

SKU	ID
616069	1671.2/4



BOSCH GEN 2 LOCKRING TOOL

NEW

- Designed for the installation and removal of chainring lockrings on Bosch® Gen 2 e-bike motors.
- Precision-engineered with CNC machined premium flex plus carbon steel for superior durability and performance.
- Integrated 1/2" drive fitting ensures compatibility with our ratchet, fixed handle, and torque wrenches for convenient use.
- Compatible with Bosch ActiveLine, Performance Line, and Performance Line CX from model year 2014 onwards, with a 50 mm locking outer diameter.
- This tool serves as a reliable replacement for the Bosch® 0275009003 tool.

SKU	ID
629466	1726.BL.2



SHIMANO STEPS LOCKRING TOOL

NEW

- Works with Shimano Steps E6100, E7000, E8000, E9000, EP8 drive units.
- Replacement for Shimano TL-FC39.
- Made from aluminum, CNC machined, red anodized.
- Being compatible with our 1725/CF Crowfoot and 1/2" drive torque wrench it's designed to work as specified by Shimano.

SKU	ID	DIM.
626644	1724.SSL	AL





— PEDAL TOOLS



SPEED PEDAL WRENCH

NEW

- Speed Pedal Wrench, the ultimate tool for effortless pedal removal and installation with maximum efficiency and convenience. Thanks to a swivel handle, this wrench allows for versatile positioning and usage at different angles. When you need to apply greater force, simply position it at a 90° angle for enhanced leverage. For rapid spinning and quicker pedal removal or installation, position the handle at 0° and rotate the wrench.
- Crafted from premium flex chrome vanadium steel, the Speed Pedal Wrench offers exceptional durability and strength. The body is drop forged to ensure robustness and longevity, even under heavy use. Equipped with an ergonomic heavy-duty double-component handle, this wrench provides a comfortable and secure grip, minimizing hand fatigue and maximizing control.
- With the Speed Pedal Wrench pedal removal or installation is easier than ever before. Available in hex sizes 8 and 6, this wrench covers the most common hex pedal install interfaces, ensuring compatibility with a wide range of pedals.
- Available in two sizes
- Made of premium flex chrome vanadium steel.
- Drop forged wrench body.
- entirely hardened and tempered
- surface finish: chrome plated to standard ISO 1456:2009
- ergonomic heavy duty double component handle
- made according to standard ISO 3315

SKU	ID	DIM.
629453	1613S/1BI	6
629454		8



3 IN 1 PEDAL WRENCH

NEW

- 3-in-1 Pedal Wrench is a great tool for all your pedal maintenance needs. The compact design pedal wrench features open end wrench size 15 mm, hex 8 mm, and hex 6 mm bits, covering all the common pedal interfaces and ensuring compatibility with a wide range of pedals.
- Open end 15 mm, hex 8 mm & hex 6 mm
- Made from laser cut tool steel.
- Heat-treated for strength and durability.
- Plastic dipped handle for comfort.
- Small and light weight, perfect for use at home or on the go.

SKU	ID
629470	1620/2P



PRO PEDAL WRENCH

- material: premium flex plus carbon steel
- surface finish: chrome plated according to ISO 1456:2009
- drop forged, entirely hardened and tempered
- ergonomic heavy duty double component handle

How to use the tool:

The professional pedal wrench has two 15 mm openings set at offset angles to easily remove pedals regardless of the pedal axle position. The design and finish ensures durability, strength and precision. The extra long handle provides the leverage to remove even the tightest pedals. Of course there is a bottle opener included for the most difficult workshop activity.

SKU	ID	DIM.
624961	1613/2BI-US	15



PEDAL GENIE

- Pedal Genie is used as a substitute for pedals while adjusting derailleurs on a bicycle without pedals. It's especially useful for building new bikes that usually come without pedals.
- The tool features a strong double injected handle, which enables comfortable and efficient grip.
- The Pedal Genie comes with two adaptors that offer two different ways of use. Threaded version for more efficient work and a conical version for quick checks.
- Threaded part is designed to work on the drive-side crank only (9/16" x 20 tpi thread).

SKU	ID
627766	2650BI-US



PEDAL WRENCH

- Laser cut from same tool steel as our Pro shop pedal wrench, heat treated for strength and durability. Pedal wrench features ergonomically shaped double dipped handle for comfort and enough leverage to loosen all the hard tighten pedals. 15 mm opening is laser cut with precision and perfect angle to help you loosen the pedals as easy as possible.
- Made from laser cut tool steel
- Heat-treated for strength and lasting performance
- Double dipped ergonomic handle for comfort
- 270mm of length for extra leverage
- Small and light weight, perfect for toolbox and traveling

SKU	ID
628518	1613/2DP-US



DOUBLE ENDED PEDAL WRENCH

- material: premium chrome vanadium steel
- surface finish: chrome plated according to ISO 1456:2009
- drop forged, entirely hardened and tempered

How to use the tool:

Pedal wrench is intended for quick, simple and effective assembly and disassembly of the pedals. Extremely long and slim body as well as specially designed jaw enable perfect adaptability to the pedals. Higher speed and safety by screwing and unscrewing the pedals compared to the traditional open end wrench ensures comfortable working without damage.

SKU	ID	DIM.
615011	1610/2	15 x 15





PEDAL THREAD REPAIR AND INSERT KIT

- Crank Saver - Pedal thread repair and insert kit
- No more problems with stripped pedal mounting threads on the cranks. With the help of our Crank Saver Kit you can repair stripped threads and save your beloved cranks.
- First use reaming taps and create oversized 5/8"×24 TPI threads in the crank arms. Thoroughly clean the threads, then apply thread locker to the insert and install it into the crank arm. Finally, thread the pedal into the insert.
- For detailed instructions on Crank Saver Kit usage and inserts installation check the video below.

Kit includes:

- Left and right reaming tap 5/8"×24 TPI
- 10 pedal thread inserts for left crank arm
- 10 pedal thread inserts for right crank arm
- Kit comes in the metal box with cut out SOS foam trays, so each of the pieces will be always in the right place.

SKU	ID
626980	1695MB1_US

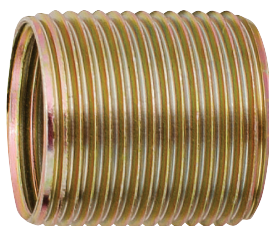


RIGHT PEDAL THREAD INSERT 10 PIECES SET

- material: premium flex plus carbon steel
- Inner dimension: 9/16 x 20 TPI
- Outer dimension: 5/8 x 24 TPI

Pedal thread inserts are used to replace damaged threads in cranks. They are used together with appropriate pedal taps and are available in 10 pcs sets.

SKU	ID	DIM.
616551	1695.3A	5/8x24



LEFT PEDAL THREAD INSERT 10 PIECES SET

- material: premium flex plus carbon steel
- Inner dimension: 9/16 x 20 TPI
- Outer dimension: 5/8 x 24 TPI

Pedal thread inserts are used to replace damaged threads in cranks. They are used together with appropriate pedal taps and are available in 10 pcs sets.

SKU	ID	DIM.
616552	1695.4A	5/8Lx24



RIGHT PEDAL THREAD INSERT 10 PIECES SET

- material: premium flex plus carbon steel
- Inner dimension: M14 x 1,25
- Outer dimension: M16 x 1

Pedal thread inserts are used to replace damaged threads in cranks. They are used together with appropriate pedal taps and are available in 10 pcs sets.

SKU	ID	DIM.
616082	1695.3	/10



LEFT PEDAL THREAD INSERT 10 PIECES SET

- material: premium flex plus carbon steel
- Inner dimension: M14 x 1,25
- Outer dimension: M16 x 1

Pedal thread inserts are used to replace damaged threads in cranks. They are used together with appropriate pedal taps and are available in 10 pcs sets.

SKU	ID	DIM.
616083	1695.4	/10



TAP HANDLE

- Tap handle is used with pedal taps - 1695.1AR, 1695.1AL, 1695.1 and 1695.2.
- Long handles enables precise and easy use.

SKU	ID
624963	1695/4BI-US



CROWFOOT PEDAL WRENCH

- Crowfoot is compatible with 1/2" torque wrenches and used to verify if pedals are tightened to correct specification. When used with 1/2" ratchet or fixed handle it can be also used as regular pedal wrench. Laser cut from tool steel and heat-treated for strength and durability.

SKU	ID	DIM.
629071	1613/2CF	15

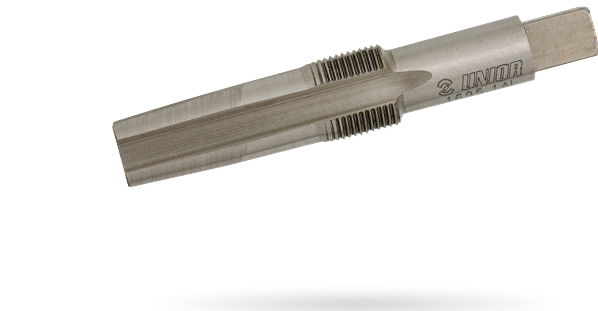


LEFT PEDAL REAMER AND TAP

- material: premium flex plus carbon steel

Precise design and hardened to stay sharp. 1695.1AL is used for cutting new left threads before inserting left pedal thread inserts 1695.4A. Pedal tap 1695.1AL removes the old thread before making a new one, so no other tap is needed.

SKU	ID	DIM.
616554	1695.1AL	5/8" x 24 tpi



RIGHT PEDAL REAMER AND TAP

- material: premium flex plus carbon steel

Precise design and hardened to stay sharp. 1695.1AR is used for cutting new right threads before inserting right pedal thread inserts 1695.3A. Pedal tap 1695.1AR removes the old thread before making a new one, so no other tap is needed.

SKU	ID	DIM.
616553	1695.1AR	5/8" x 24 tpi



PEDAL TAPS

- material: premium flex plus carbon steel

Precise design and hardened to stay sharp. 1695.1 is used to restore existing pedal threads and is available in set (left and right).

SKU	ID
616080	1695.1



LEFT AND RIGHT REAMER AND TAP

- material: premium flex plus carbon steel


Precise design and hardened to stay sharp. 1695.2 is used for cutting new threads before inserting pedal thread inserts 1695.3 or 1695.4 and is available comes in set (left and right).

SKU	ID
616081	1695.2





CHAIN

 UNITOR
1647/2BB-LUS
F4B

MASTER CHAIN TOOL

The most advanced chain tool in our range. Featuring machined body & precisely made spindle threads for smoothness and ease of use. Large handle gives extra leverage and breaks the chain easily. Master Chain Tool features floating chain support for perfect positioning and support of any chain. Works with all derailleur chains from 6–12-speed, is compatible with SRAM AXS chain and works with 1/8" single speed chains. It also supports Campagnolo's 11- and 12-speed chain peening. Tool comes with three different interchangeable chain supports; preinstalled is a single link support, available are also a wider double link chain support for extra grip on the chain and a dedicated SRAM AXS chain support. Hidden compartment at the in body of the tool features an additional replacement chain pin.

Comes with:

- Long and short derailleur chain support (compatible with 6–12-speed derailleur chains)
- Dedicated SRAM AXS chain support
- Campagnolo chain pin blocker
- Replacement chain pin
- Compatible with:
- All derailleur chains from 6–12-speed
- SRAM AXS flat top chain
- Most single speed 1/8" chains
- Campagnolo 11- and 12-speed chain peening

SKU	ID
628516	1647/2BBI-US



MINI CHAIN TOOL +

Our Mini Chain Tool + is ideal chain tool to take it with you out on the bike. Never mind the riding style or the drive train you use, this chain tool can cover anything from 5 to 11 speed and perform like our professional shop tools. Despite the small design, there is more it can do - its handle doubles in function as a valve core remover for schrader and presta valves.

SKU	ID
627100	1647/5MINI



CHAIN TOOL

- Designed for 5-11 speed chains
- Comfortable dipped handles

How to use the tool:

The basic screw type chain tool is intended for home users. The simple tightening of the spindle fits the chain pin perfectly. The ergonomic design makes it precise and easy to use.

SKU	ID
624901	1647HOBBY/4P-US



PRO CHAIN TOOL

- material: premium flex plus carbon steel
- ergonomic heavy duty double component handle
- also supports Campagnolo 11 speed chain

How to use the tool:

The Screw type chain tool is intended for both professionals and enthusiast users. The simple tightening of the spindle fits the chain pin with perfect precision and with its ergonomic design it is easy to use.

SKU	ID
624900	1647/2ABI-US



REPLACEMENT CHAIN PINS FOR 1647/2ABI AND 1647/2BBI

SKU	ID
621734	1647/1/4A



MASTER LINK PLIERS

NEW

- Master link pliers are designed for installation and removal of the chain master links on most 6–13 speed derailleur chains, including Sram flat top chains.
- Laser cut and heat treated.
- Features dual-function jaws capable of both opening and closing master links.
- Compatible with 6–13 speed derailleur chains, including Sram flat top chains.
- Equipped with double-dipped handles for enhanced comfort.
- material: premium flex plus carbon steel
- surface finish: chrome plated to standard ISO 1456:2009

SKU	ID
629366	1720/4DP



CHAIN RIVET PLIERS

- material: premium flex plus carbon steel
- drop forged, entirely hardened and tempered
- surface finish: chrome plated according to ISO 1456:2009
- pin induction hardened
- double plastic dipped handles

The chain rivet pliers have been developed to enable both professional and home mechanics to work quickly and safely on bicycle chains. Higher functionality and practicality are the advantages of the chain rivet pliers and with this unique design less physical effort is required to extract the rivet from the chain. Jobs will be performed quickly and comfortably without damage to the rivet or chain plate. The ergonomic design enables single handed use.

SKU	ID	DIM.
624914	1640/1DP-US	240



CHAIN WEAR INDICATOR

NEW

The perfect tool to keep your bike's drivetrain in top condition. Made from precision, laser-cut steel, this indicator precisely measures chain wear at levels where chain manufacturers commonly suggest replacing the chain (0.5% and 0.75%). The three-point tool design isolates pin wear from roller wear, ensuring accurate results. Use the QR code to watch the instruction video. It works on all 6-13 speed chains, including SRAM flat top chains. As a general rule, 11-13 speed chains should be replaced before or at 0.5% wear, while 6-10 speed chains should be replaced before or at 0.75% wear.

- Staying on top of chain wear is important as a worn chain can cause poor shifting and wear out other drivetrain components.
- Made from precision, laser cut steel.
- Precisely measures 0.5% and 0.75% chain wear – wear levels where chain manufacturers most commonly suggest replacing the chain.
- Three point tool design isolates pin wear from roller wear
- Features QR code with video usage instructions
- Works on all 6-13 speed chains, including Sram flat top chains.
- Refer to chain manufacturer replacement instructions.
- General rule for replacing the chain.
- 11–13 speed chains – replace before or at 0.5% wear
- 6–10 speed chains – replace at before or at 0.75% wear

SKU	ID
629344	1644/6



PRO CHAIN WEAR INDICATOR

How to use the tool:

To alleviate poor shifting and uneven drive train wear, most manufacturers recommend chain replacement at or before 0,6% stretch. Now you can quickly and accurately determine the wear and stretch of any chain. Simply insert the chain checker's pins into two links, press the swing arm gauge tight, and then check the gauge window for an accurate reading.

SKU	ID	DIM.
617170	1643/4	0-1,2



REPLACEABLE PIN FOR CHAIN RIVET PLIERS

- material: premium flex plus carbon steel
- surface finish: blacken to standard DIN 50938
- pin induction hardened

SKU	ID
605956	1640/1/4





UNIOR
1720/4DP
V49

EAGLE
3793

EAGLE
3793

EAGLE
3793



**CASSETTE &
FREEWHEEL TOOLS**



CASSETTE WRENCH

- material: premium flex plus carbon steel
- surface finish: chrome plated according to ISO 1456:2009
- ergonomic heavy duty double component handle
- Two configurations: one for 10/11/12t small-cog cassettes, one for 13/14t small-cog cassettes
- Ridges on the outside of the pins provide a secure grip on the cassette.
- Access hole allows for a cassette locking tool to fit.

How to use the tool:

Modern replacement of the traditional chain whip

Pins on the tool engage with the smallest sprocket on the cassette and hold it in place, while the opening in the middle allows for easy access to the cassette lockring.

Version for 11- & 12-tooth sprockets has longer pins on the "12t" side. This makes it fully compatible with cassettes where two smallest sprockets have 10 and 12 teeth. For removal of the sprocket, where the smallest sprocket has 10t, the tool reaches over it and engages with the next 12t sprocket.

SKU	ID	DIM.
624931	1670/2BI-US	11/12
624967		13/14



CASSETTE WRENCH FOR SRAM X-RANGE

Modern replacement of the traditional chain whip. Pins on the tool engage with the smallest 10T sprocket on the cassette and hold it in place, while the opening in the middle allows for easy access to the cassette lockring.

- material: premium flex plus carbon steel
- surface finish: chrome plated according to ISO 1456:2009
- ergonomic heavy duty double component handle
- Single sided, compatible only with Sram X-Range cassettes
- Ridges on the outside of the pins provide a secure grip on the cassette
- Access hole allows for a cassette locking tool to fit.

SKU	ID
629061	1670/2BI-AXS-US



CHAIN WHIP, SINGLESPEED

Thanks to its ergonomic shape and long double dipped handle for leverage, this chain whip will disassemble 1/8" fixed gear sprockets and single speed cassette sprockets with ease and without slippage. Magnet at the end of the chain helps with securing the chain to the sprocket and makes storage easier. Tool body features a locking wrench for fixed gear sprocket lockrings. Made from laser cut tool steel and heat treated for strength and lasting performance.

- material: premium flex plus carbon steel
- surface finish: chrome plated according to ISO 1456:2009
- Magnet holds chain in place and makes the storage easier

SKU	ID
628902	1659/2DP-US



CHAIN WHIP, MULTISPEED

Thanks to its ergonomic shape and long double dipped handle for leverage, this chain whip will disassemble cassettes with ease and without slippage. Made from laser cut tool steel and heat treated for strength and lasting performance. The tool is designed to work with multi-speed cassettes from 6- to 12-speed, including SRAM X-range cassettes.

- material: premium flex plus carbon steel
- surface finish: chrome plated according to ISO 1456:2009
- double plastic dipped handles
- Magnet holds chain in place and makes the storage easier

SKU	ID	DIM.
628904	1660/2DP-US	11/12



SPROCKET WEAR INDICATOR

- material: premium flex plus carbon steel
- surface finish: chrome plated according to ISO 1456:2009
- for HG and IG sprockets

How to use the tool:

The sprocket wear indicator is used to determine the condition rear sprockets. It can be used to check 12 to 21 tooth sprockets. Procedure: The chain is put on the sprocket and the tool placed with its round end between two teeth on the upper sprocket side. The last chain link is moved away from the sprocket and a force of 100 N or 10 kg is applied to the tool in the direction of sprocket rotation. Now the last chain link is moved towards the sprocket. If it skips easily to the cog the sprocket is in a good condition and will function flawlessly even with a new chain. However, if the last chain link gets stuck on the tip of the neighbouring tooth or if we have to force it to skip on the cog, the sprocket is worn out and should be replaced. In case the chain falls off the cog when applying force, the sprocket is heavily worn out and a replacement is overdue.

SKU	ID	DIM.
629230	1658/2P	HG-IG



UNIVERSAL FREEWHEEL REMOVER

How to use the tool:

With Unior's 1722/2BI you can firmly grab the complete sprocket from two sides, turn the spindle and fix firmly. The spindle and the side bushings on the tool create a strong grip. By turning the tool counter clockwise you can unscrew the sprocket.

SKU	ID
624937	1722/2BI-US



CASSETTE LOCKRING WRENCH WITH GUIDE

Wrench for rear sprocket with handle is used for Shimano®, SRAM®, Sun Race®, Suntour® and other cassette sprockets, like the key nr. 1670.7. Fixed handle enables easier use because no additional tools for gripping the key are necessary. The two-component sleeve on the handle fits the hand exactly and enables a perfect grip of the key.

SKU	ID	DIM.
624932	1670.8/2BI-US	350



FREEWHEEL REMOVAL TOOL

For: Shimano®, SRAM® and Sachs Aris®, Sun Race®

How to use the tool:

Use the freewheel remover together with the Unior 1/2" ratchet 190.1ABI

SKU	ID
616062	1670.1/4



CAMPAGNOLO CASSETTE LOCKRING TOOL

The freewheel remover is used for removing an assembling Campagnolo® freewheels.

How to use the tool:

Use the freewheel remover together with the Unior 1/2" ratchet 190.1ABI

SKU	ID
616707	1670.4/4



CASSETTE LOCKRING TOOL

Shimano®, SRAM®, Sun Tour®, Chris King® and Sun Race® and others.

How to use the tool:

Use the freewheel remover together with the Unior 1/2" ratchet 190.1ABI

SKU	ID
616065	1670.5/4



FREEWHEEL REMOVER SUNTOUR®

For: Suntour®

SKU	ID
616063	1670.2/4



FREEWHEEL REMOVER SUNTOUR®

For: Suntour®

SKU	ID
616064	1670.3/4



FREEWHEEL REMOVER FOR BMX®

Freewheel BMX®

SKU	ID
616066	1670.6/4



CASSETTE LOCKRING WITH GUIDE PIN

Cassette lockring tool with guide

SKU	ID
616067	1670.7/4

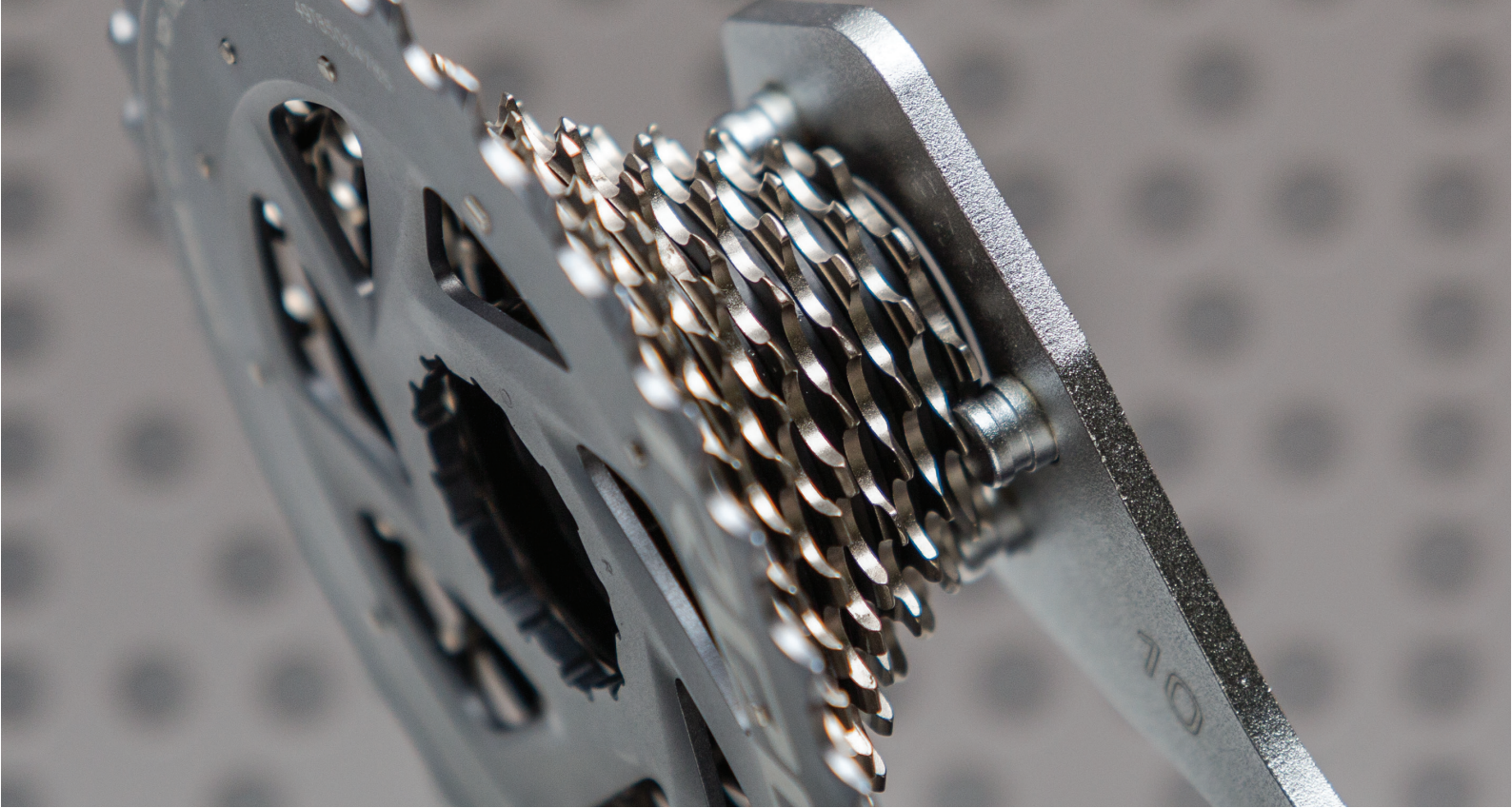


CASSETTE LOCKRING TOOL WITH 12MM GUIDE PIN

Tool is used to remove and install cassette on hubs with 12 mm through axle.

SKU	ID
625615	1670.9/4





2 IN 1 POCKET SPOKE AND CASSETTE LOCKRING TOOL

- material: premium flex plus carbon steel
- surface finish: blacken to standard DIN 50938
- The wrench is the basic working tool for cyclists extended tours.

How to use the tool:

To change broken spokes on the right side of the rear wheel, the cassette has to be removed first.

Firstly remove the rear wheel, then fit the tool onto the freewheel nut.

Replace the rear wheel, so that the square edge of the tool presses to the frame or derailleur hanger. After that, push the pedals in the forward direction and loosen the freewheel nut. Remove the cassette and replace the broken spoke. In order to prevent the possibility that the paint on the bicycle frame is damaged, a protective plastic plate should be inserted between the key and the frame.



SKU	ID
616758	1669/4



PRO SOCKET HANDLE

- material: premium flex chrome vanadium steel
- body drop forged
- entirely hardened and tempered
- surface finish: chrome plated to standard ISO 1456:2009
- ergonomic heavy duty double component handle

Pro Socket Handle is not just another tool from our general tool program. It has been developed purposefully for our bike program. It is light, compact, extremely durable and features double component ergonomic handle. Designed to work with our cassette lock ring tools, flat sockets for suspension service and many more.

SKU	ID
627085	190.8/2BI-US

1/2"





BRAKE TOOLS



DISC BRAKE PISTON SPREADER

The conically shaped tip of the tool is designed to slide between the pads inside the caliper and spread the pads by pushing pistons back into the caliper. Tool is bend under 30° for easier access to the caliper and features a double dipped handle for comfort.

- Made from laser cut tool steel
- Heat-treated for strength and lasting performance
- Double dipped ergonomic handle for comfort

SKU	ID	DIM.
626335	1750/2DP-US	1/4"



2-IN-1 DISC BRAKE TOOL

- material: premium flex plus carbon steel
- surface finish: chrome plated according to ISO 1456:2009

Unique design of this tool combines two tools in one – standard disc brake pad spreader and rotor truing fork. The slot allows you to true the rotor back in place and save you thumbs from getting cut on the sharp edges of the rotor. The conically shaped tip of the tool is designed to slide between the pads inside the caliper and spread the pads, pushing pistons back in to the caliper. 2-in-1 Disc Brake Tool is the tool to have at hand in any home garage, when out riding or traveling.

Warning:

Always make sure disc calipers and disc rotor have cooled down before you start working on them.

SKU	ID
627087	1757/2DP-US



ROTOR TRUING FORK

- material: premium flex plus carbon steel
- surface finish: chrome plated according to ISO 1456:2009

The tool is designed to repair minor damage on brake rotors. It features two different slot depths to choose from.

SKU	ID	DIM.
624905	1666/2DP-US	2.2



BOTTOM BRACKET WRENCH 16 NOTCH

- material: premium flex plus carbon steel
- surface finish: chrome plated according to ISO 1456:2009
- ergonomic heavy duty double component handle

The wrench is used to remove and install Shimano® Hollowtech II, Campagnolo® Ultra-Torque and Power Torque, Race Face®, FSA®, SRAM®, Truvativ®, Chris King® bottom brackets as well as many and others. Small wrench is included for removal and installation of Shimano plastic bolts that are used on the Hollowtech II cranksets. The 1609/2BI wrench also fits on the external centerlock disc nut.

SKU	ID
624903	1609/2BI-US



FLARE NUT WRENCH

NEW

Introducing the Flare Nut Wrench. This double-sided wrench features a 7mm and 8mm opening on each side, making it versatile and suitable for a wide range of brake systems. The five-sided head holds the nut on five sides, spreading the force evenly and preventing damage to the fasteners. This wrench is specifically designed to be used on any hydraulic brake system, including compression hydraulic hose nuts and bleed nipples. Its low-profile design allows for easy access to fittings in tight spaces. Additionally, the Flare Nut Wrench can be used as a standalone tool or in combination with a torque wrench via its built-in 1/4" square drive.

- Double sided wrench with 7 and 8mm opening,
- Each side features five sided flare wrench head that holds the nut on five sides and spreads the force evenly, preventing damaging the fasteners.
- Designed to be used on any hydraulic brake system - to be used with compression hydraulic hose nuts and bleed nipples.
- Low profile design for easier access to the fitting in tight spaces
- Designed to work as a standalone wrench or be used as a crow foot in combination with torque wrench via 1/4" built in square drive.

SKU	ID	DIM.
629365	1760/2	7x8



OFFSET OPEN RING WRENCH

- material: premium chrome vanadium steel
- drop forged, entirely hardened and tempered
- surface finish: chrome plated according to ISO 1456:2009
- profile up to dimension 12x14 is 6 point, from 17x19 to 30x32 is 12 point

Usage:

In industry and repair shops specializing in hydraulic and pneumatic installations This wrench helps working on joints where the use of standard ring wrench is impossible due to the nature of the job (ex. unions on steel cables, hydraulic and water pipes and on valves etc).

SKU	ID	DIM.
612701	183/2	8x10



CABLE PULLER PLIERS WITH LOCK

- material: premium plus carbon steel
- surface finish: chrome plated according to ISO 1456:2009
- double plastic dipped handles

How to use the tool:

The basic function of the inner wire pliers is to tension brake and derailleur steel cables. It is used for holding the inner cable and pulling it out of the housing. The safety lock is activated with a thumb push. The pliers can now be released and the cable fixed. The lock is automatically released by squeezing handles together. The additional safety lock enables easier, faster and more comfortable use.

SKU	ID
624917	1642.1/2P-US







— FRAME & FORK TOOLS



BOTTOM BRACKET TAPPING TOOLS - BSA

- Ideal tool for fixing bottom bracket threads on the frame or removes excess paint or dirt from threads
- Magnetic handle eases assembly of the tool
- ergonomic heavy duty double component handle
- BSA standard - left & right thread tap 1.3/8 × 24 TPI

The set contains:

- Reamer's magnetic handle 1695.1/4BI or 1695.1/4BIUS
- Reamer holder for 1697.2/4
- Left & right tap BSA 1.3/8 × 24 TPI

SKU	ID
626475	1697-US



BOTTOM BRACKET TAPPING TOOLS, ITAL

- Ideal tool for fixing bottom bracket threads on the frame or removes excess paint or dirt from threads
- Magnetic handle eases assembly of the tool
- ergonomic heavy duty double component handle
- ITA standard –two thread taps M36 × 24 TPI

The set contains:

- Reamer's magnetic handle 1695.1/4BI or 1695.1/4BIUS
- Reamer holder for 1698.2/4
- Two ITAL thread taps M36 × 24 TPI

SKU	ID
626473	1698-US



ADAPTOR FOR TAP BSA

Adaptor is compatible with taps BSA 1697.1 and magnetic handle 1695/4BI for reamers and taps. Slot on the top of the adaptor enables quick and easy assembly of the tool together with the handle for reamers and taps 1695/4BI.

SKU	ID
626467	16972/4



ADAPTOR FOR TAP ITAL

Adaptor is compatible with taps ITAL 1698.1 and magnetic handle 1695/4BI for reamers and taps. Slot on the top of the adaptor enables quick and easy assembly of the tool together with the handle for reamers and taps 1694/4BI.

SKU	ID
626466	1698.2/4



SET OF ADAPTORS AND TAPS BSA

Set is compatible with magnetic handle 1695/4BI for reamers and taps.

The set contains:

- 2 adaptors for taps BSA
- Left & right tap BSA 1.3/8 × 24 TPI

SKU	ID
626487	1697.3



SET OF ADAPTORS AND TAPS ITAL

Set is compatible with magnetic handle 1695/4BI for reamers and taps.

The set contains:

- 2 adaptors for taps ITAL
- 2 taps ITAL 36 × 24 TPI

SKU	ID
626486	1698.3



TAPS BSA

- material: premium plus carbon steel
- Left and right taps available in set for article 1697.
- Set of taps L & R BSA 1.3/8 x 24 TPI

SKU	ID	DIM.
617310	1697.1	1.3/8x24tpi (BSA)



HEAD TUBE REAMER 1.1/8"

Frame preparation is the key to the perfect alignment and ultimate performance of your headset. Get the perfect fit of the headset with the edging of the head tube. With this tool, you can also remove the excess of the paint or repair the damaged head tube.

The set contains:

- Reamer's magnetic handle 1695.1/4BI or 1695.1/4BIUS
- Reamer frame for head tube 1694.2/4
- Cone guide
- Head tube reamer for 1694 – 1.1/8
- compression spring and nut

SKU	ID
626480	1694-US



BOTTOM BRACKET REAMER

- material: premium plus carbon steel
- compatible with BSA & ITAL standard

SKU	ID	DIM.
617592	1699.1	44mm



TAPS ITAL

- material: premium plus carbon steel
- Left and right taps available in set for product no. 1698.
- Set of 2 taps ITAL 36 x 24 TPI

SKU	ID	DIM.
617590	1698.1	36x24tpi (ITAL)



BRACKET SHELL FACING TOOL - BSA AND ITAL

- Easy to use
- Tool is used to restore or prepare the surface of bottom bracket shell
- Magnetic handle eases assembly of the tool
- ergonomic heavy duty double component handle
- Precision manufactured tool
- Reamer frame guide BSA 1699.4BSA with tool 1699.5/4P

The set contains:

- Reamer's magnetic handle 1695.1/4BI or 1695.1/4BIUS
- Reamer body 1699.2/4
- Reamer 1699.1
- Reamer frame guide BSA 1699.4BSA with tool 1699.5/4P

Option

- Reamer frame guide ITA 1699.4ITA

SKU	ID
626477	1699-US



HEAD TUBE REAMER

- material: premium plus carbon steel
- reamer for head tube with diameter 1.1/8"

SKU	ID	DIM.
617824	1694.1	1.1/8"



BOTTOM BRACKET FACING TOOL GUIDE BSA

- Guide ensures precise centering of the bottom bracket reamer.
- Threads into the frame with the wrench for guide 1699.5/4P.

SKU	ID
626470	1699.4BSA



BOTTOM BRACKET FACING TOOL GUIDE ITAL

- Guide ensures precise centering of the bottom bracket reamer.
- Threads into the frame with the wrench for guide 1699.5/4P.

SKU	ID
626469	1699.4ITA



BOTTOM BRACKET REAMER TOOL FRAME BSA & ITA

Tool frame is compatible with bottom bracket reamer 1699.1 and magnetic handle for reamers and taps 1695/4BI. Slot on the top of the adaptor enables quick and easy assembly of the tool together with the handle for reamers and taps 1694/4BI.

SKU	ID
626468	1699.2/4



HEAD TUBE FACING TOOL FRAME

Reamer frame is compatible with reamer 1694.1 and magnetic handle for reamers and taps 1695/4BI. Slot on the top of the adaptor enables quick and easy assembly of the tool together with the handle for reamers and taps 1694/4BI.

SKU	ID
626463	1694.2/4



WRENCH FOR BOTTOM BRACKET FACING TOOL GUIDE BSA & ITA

Wrench is used to thread bottom bracket facing tool into the frame and is compatible with BSA & ITAL guides. The handle of the wrench is plastic dipped for comfort.

SKU	ID
626471	1699.5/4P



GUIDE FOR TAPS 1697.1 AND 1698.1

Guide threads into adaptor to hold taps in place and centers the tool during usage. Guide is compatible with both 1697.1 and 1698.1 taps and 1697.2/4 and 1698.2/4 adaptors. It consists of male and female part with a precise fit.

SKU	ID	DIM.
627325	1697.4	44mm



HANDLE FOR REAMERS & TAPS

Handle is ergonomically shaped and made of heavy duty two component material. Its specialty is the magnetic tooth, which enables quick and easy assembly of the tool and at the same time allows you to use a single handle on several different tools.

- Handle is compatible with:
- Bottom bracket tapping tool BSA 1697
- Bottom bracket tapping tool ITAL 1698
- Bottom bracket facing tool BSA & ITAL 1699
- Head tube facing tool 1694
- Set of adaptors and taps BSA 1697.3
- Adaptor for tap BSA 1697.2/4
- Set of adaptors and taps ITAL 1698.3
- Adaptor for tap ITAL 1698.2/4
- Bottom bracket reamer tool frame BSA & ITA 1699.2/4
- Head tube facing tool frame 1694.2/4

SKU	ID	DIM.
626465	1695.1/4BI-US	1.1/8"



HEADSET PRESS

- material: premium flex plus carbon steel

This tool accurately presses headset cups 1", 1-1/8", 1-1/4" and 1-1/2" into head tubes. In addition it has a longer spindle for BMX headsets with larger tubing. This precision made tool enables work without damage.

SKU	ID	DIM.
616290	1680/4	1" x 1.1/8" x 1.1/4" x 1.1/2"



HEAD SET CUP REMOVER

- material: premium flex plus carbon steel
- surface finish: blacken to standard DIN 50938

The head set cup remover makes removal of cups 1", 1-1/8" and 1-1/4" from the frame easy

SKU	ID	DIM.
616291	1681/4	1" x 1.1/8" x 1.1/4"



HEAD SET CUP REMOVER

- material: premium flex plus carbon steel
- surface finish: blacken to standard DIN 50938
- The head set cup remover makes removal of cups 1-1/4" and 1-1/2" from the frame quick and easy

Suitable to remove PressFit 30 (PF30) bottom bracket cups. PF30 bottom bracket cups are pressed in to the frame the same way as the head tube cups and have the same internal diameter.

SKU	ID	DIM.
619705	1681.1/4	1.1/4" x 1.1/2"



CROWN RACE SETTER

The tool is used for installation of the crown race to a steerer tube of the fork. Tool consists of the tool body and interchangeable adapters in dimensions 1", 1.1/4", 1.1/8" & 1.1/2", which are to be used accordingly to the steerer tube's seat dimension. Adapters are designed to make crown race installation safe and not to damage the components. The tool is compatible with steerer tubes with length up to 380 mm. The tool is used in the combination with the hammer; we recommend Unior's Dead Blow Hammer 819A.

- material: premium plus carbon steel
- surface finish of tube: zinc plated according to ISO 2081 Fe/Zn8/B, inserts blacken to standard DIN 50938
- Dimension: 1", 1.1/4", 1.1/8", 1.1/2"
- Compatible with steerer tubes with maximum length of 380 mm
- Lifetime warranty
- Made in Europe.

SKU	ID	DIM.
626268	1683/5A	15-35



CROWN RACE PULLER

- material: premium flex plus carbon steel
- surface finish: blacken to standard DIN 50938

How to use the tool:

The puller is a tool for quickly and precisely removing the headset crown race from 1", 1-1/8", 1-1/2" or 1-1/4" suspension or rigid front fork. To use, place the puller bush onto the front fork race and fix it by turning the nut. Turn the spindle attached to the steering column to pull the crown race from the fork. The product enables efficient race removal without the use of a hammer. It is intended for both professionals and enthusiasts.

SKU	ID	DIM.
626270	1614/4BI-US	50-80



BALL RACE REMOVER

- material: premium flex plus carbon steel
- surface finish: blacken to standard DIN 50938

How to use the tool:

This tool is used for removal of headsets of older bike models. To remove the ball bearing cups, tap on the tool with hammer.

SKU	ID	DIM.
615527	1616/4	1",11/8",11/4"



STAR NUT SETTER

- material: premium plus carbon steel
- surface finish: blacken to standard DIN 50938

The threadless nut setter is used to install the star fangled nut found on 1" and 1-1/8" threadless headset systems. It is intended for both professionals and home users.

SKU	ID	DIM.
616292	1682/4	1"-1/8"



OFFSET SINGLE SIDED CONE WRENCH

- material: premium flex plus carbon steel
- surface finish: chrome plated according to ISO 1456:2009
- double plastic dipped handles

The design of the offset cone wrench enables working in difficult hard to reach places. This unique design is suitable for assembly and disassembly of nuts on Sun Tour headsets. It is intended to be used together with the single sided cone wrench, product no. 1617/2DP. The new design enables higher torque with reduced force.

SKU	ID	DIM.
624939	1618/2DP-US	36



STAR NUT GUIDE

- material: premium flex plus carbon steel
- surface finish: phosphated to standard ISO 9717

The guide is designed for guiding the threadless nut setter when installing star nuts found on 1" and 1-1/8" threadless headset systems. It is intended for both professionals and enthusiasts.

SKU	ID	DIM.
619618	1682,1/4	1",1,1/8"



STEERER TUBE CUTTING GUIDE

- material: premium flex plus carbon steel
- for dimensions: 1", 1-1/4", 1-1/8", 1-1/2"
- The 1604/2PLUS enables mounting of the measuring gauge item 1604.1/2PLUS, which enables fast and precise determination of steering tube length desired after the cut.

How to use the tool:

When the steering tube on a new fork is longer than necessary, it needs to be shortened to the correct length. The cutting guide enables an even and precise cut of the steerer tube with dimensions 1", 1-1/4", 1-1/8", 1-1/2". Clamp the fork into the cutting rail, the cut must be positioned exactly on the opening of the guide itself. Lightly tighten the screw. Install the cutting guide along with the fixed fork to the vice on the work bench. Saw the steering tube by means of a saw (product no. 750) through the opening in the guide. The compact and precision housing, made in a compact does not leave scratches on the steering tube.

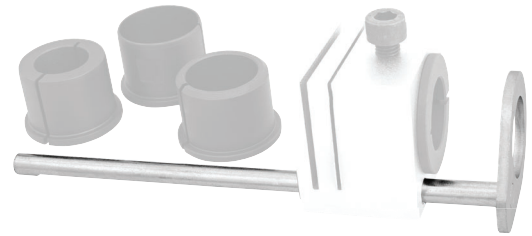
SKU	ID	DIM.
623417	1604/2PLUS	1" x 1.1/8" x 1.1/4" x 1.1/2"



GAUGE FOR STEERER TUBE CUTTING GUIDE

Measuring gauge item 1604.1/2PLUS fits onto the steerer cutting guide 1604/2PLUS and enables fast and precise determination of steering tube length desired after the cut.

SKU	ID	DIM.
623418	1604.1/2PLUS	1" x 1.1/8" x 1.1/4" x 1.1/2"



INTERNAL - EXTERNAL REAMER

- Create a professional and burr free finish on cut tubes. After cutting, simply place the reamer over the tube end and twist until burrs are removed.
- removes burrs on interior and exterior tube edges
- plastic housing with ribbed surface for grip
- cutting blades from special tool steel, oil hardened

SKU	ID	DIM.
626249	363A	3-42



TUBE CUTTER

Designed to be an easy to use and effective way of cutting tubes. Simply place the cutter and engage the cutting wheel at your desired position, rotate tool around the tube while adjusting the cutting wheel using the ergonomic knob.

- instant wheel change
- ergonomic knob
- 4 rollers for a better fastening of the tube and smooth operation
- spare cutting wheel in handle
- possible individual use of burr NOGA removal tool
- steel threaded insert for longer life span

Usage:

for cutting cooper, aluminium, inox and steel tube of maximum thickness till 2mm

SKU	ID	DIM.
626187	360/6A	3-35



DROPOUT ALIGNMENT GAUGES

- material: premium flex plus carbon steel
- surface finish: blacken to standard DIN 50938

- How to use the tool:
- To use, remove the wheel and insert the tool into the frame. This tool is used for the alignment of the rear triangle and dropouts.

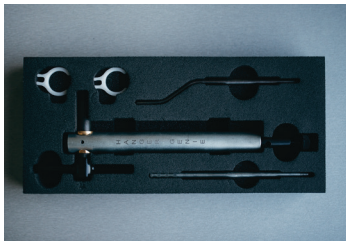
SKU	ID
618412	1692/4



HANGER GENIE - HANGER ALIGNMENT TOOL

Hanger Genie is foldable and precise tool, used for re-aligning rear derailleur hangers and maintaining precise gear shifting. It's compatible with all wheel sizes from 20" to 29"+ and screws directly into rear derailleur hanger threads. Precise measuring gauge can be locked in place, so you don't lose your measurement when you push it against the wheel in different positions. Thanks to rotating bottom part of the tool, you can easily clear the frame when you work your way around the wheel.

SKU	ID	DIM.
628355	1602/5	3-42



FRAME TAPS

- material: premium plus carbon steel
- Its function is to restore rusted or restore damaged threads. Available in three different thread sizes.
- The finish prevents external damage.
- M10 - frame tap for derailleur hanger (616079) M5 - frame tap for water bottle, fender, rack bosses (616078) M3 - frame tap for rear wheel dropout alignment screws (616077)

SKU	ID	DIM.
616077		3
616078	1695	5
616079		10x1





— BEARING TOOLS —



UNIVERSAL BEARING PRESS

- Unior's 1721 universal bearing press set enables installation of bearings on most of the frames and components.
- Set includes spindle with two threaded handles, adaptors for following standard bearings: 608, 1526, 6000, 6001, 6802, 6803, 6804, 6805, 6900, 6901, 6902, 6903, R6, 28x17 (Hope), BB30, all Press-fit standards and two different sized plastic coated adaptors, to protect carbon surfaces during bearing installation.
- One of the threaded handles includes a quick release system for quick and easy use.
- All items are organized in a compact two layer SOS foam storage box.

SKU	ID	DIM.
623301	1721	10 x 1



BOTTOM BRACKET BEARING PRESS KIT

NEW

- Bottom bracket specific bearing press kit.
- Include drifts for all most common press fit and BB30 bottom bracket standards – Sram DUB, BB30, BB86/BB92.
- Organised storage in a plastic case with a laser-cut SOS foam tray
- Threaded handle includes a quick release system for quick and easy use.

SKU	ID
629167	1721BB



INNER BEARING PULLER

- material: premium chrome vanadium steel
- drop forged, entirely hardened and tempered
- surface finish: chrome plated according to ISO 1456:2009
- ergonomic heavy duty double component handle

Advantages:

Set includes 6 pcs of arm for inner bearing dimensions 6.5-8,10-12, 12-15, 17-20, 22-28, 30-36

Usage:

It is used for pulling different types of bearings. The bearing is gripped from the inside side and pulled out. the bearing is extract with a 1 kg weight

SKU	ID
626629	689/2BI-US





SUSPENSION TOOLS



DOMOTOR
1783/2 6P
32
NOS

MADE IN ITALY

SUSPENSION SERVICE SET

Suspension service set includes the most common tools for servicing suspension forks and shocks, all nicely arranged in a SOS tool tray and stored in a compact box.

- The set contains:
- Bushing extractor set sizes 12 mm and 12.7 mm
- Fork seal driver tool for fork sliders sizes 30, 32, 34, 35, 36, 37, 38 and 40 mm
- Hex wrenches sizes 3/64", 1/16", 1.5, 2, 2.5 and 3
- 1/2" sockets sizes 10, 15, 26, 27, 28, 30 and 32
- 1/2" reversible ratchet
- 1/4" socket size 5
- 1/4" swivel handle
- Suspension wrench with strap
- Waterpump box joint pliers
- Awl with round, double bent blade

SKU	ID
628959	1704-US



FORK SEAL DRIVER TOOL

Fork seal driver tool is specially designed for dust seal installation on the suspension forks. The drivers are designed to use the forks bushing as a guide, eliminating crooked seal installation, and ensuring perfect fit of the seal. The tool is made from reinforced plastic and does not damage the seal or the fork housing during the installation. Available in different sizes, each of them corresponding to specific stanchion diameter, and is compatible with both flangeless and flanged seals, making them compatible with most modern forks.

Better compatibility is the biggest virtue of the newest version of this tool, but it also has laser engraved logos & spec, which will stay clearly visible for extended period of time.

SKU	ID	DIM.
627753	1702	30
627754		32
627755		34
627756		35
627757		36
629034		37
629035		38
627758		40



FORK SEAL DRIVER TOOL SET

Set features dust seal drivers in size 30, 32, 34, 35, 36, 37, 38 and 40.

Fork seal driver tool is specially designed for dust seal installation on the suspension forks. The drivers are designed to use the forks bushing as a guide, eliminating crooked seal installation, and ensuring perfect fit of the seal. The tool is made from reinforced plastic and does not damage the seal or the fork housing during the installation. Available in different sizes, each of them corresponding to specific stanchion diameter, and is compatible with both flangeless and flanged seals, making them compatible with most modern forks.

Better compatibility is the biggest virtue of the newest version of this tool, but it also has laser engraved logos & spec, which will stay clearly visible for extended period of time.

SKU	ID	DIM.
629075	1702-SET	40



FLAT WRENCH FOR SUSPENSION SERVICE

Wrench is used to remove and install IFP reservoir on RockShox Super Deluxe shocks and RockShox Vivid Air shocks. It features double dipped handle for comfort, with the right leverage to prevent overtightening of the reservoir. Crowfoot allows the use of 1/2" torque wrench for more precise work. Made from laser cut tool steel and heat-treated for strength and lasting performance.

SKU	ID
629073	1706/2DP-US



SUSPENSION TOP CAP SOCKET

- material: premium flex chrome vanadium steel
- drop forged, entirely hardened and tempered
- surface finish: chrome plated according to ISO 1456:2009
- polished

Usage:

Flat sockets are used on a bicycle suspension fork where the top nut has a very low profile.

SKU	ID	DIM.
625716		23
624214		24
624215		26
624216	1783/16P	27
624217		28
624218		30
624219		32



SUSPENSION WRENCH WITH STRAP

- material: premium chrome vanadium steel
- drop forged, entirely hardened and tempered
- surface finish: chrome plated according to ISO 1456:2009
- Tool has a double plastic dipped handle for great comfort.

Usage:

Tool is used for servicing bicycle suspension. With its smooth rubberized strap you can grab any kind of smooth and sensitive surface, like shock or fork sliders.

SKU	ID	DIM.
625105	1705/2DP-US	27



SHOCK BUSHING EXTRACTOR SET

- Tool is used for removing old bushings from the rear shock.
- With use of this tool and a vice, removal of the bushing is incredibly easy.
- Tool supports bushings removal with diameter 12 mm and diameter 12,7 mm.

SKU	ID	DIM.
623006	1701/5	12-12,7



INTERNAL LOCK RINGS PLIERS, STRAIGHT

- material: premium plus carbon steel
- drop forged, entirely hardened and tempered
- head polished
- surface finish: chrome plated according to ISO 1456:2009
- tips black finish
- double plastic dipped handles
- made according to standard DIN 5256 form C

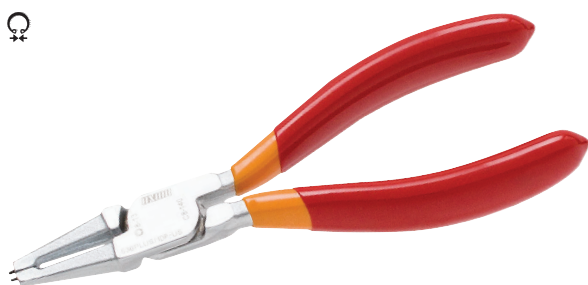
Advantages:

30% higher endurance in comparison to convenient lock rings pliers with inserted tips for diameter 8 to 100mm

Usage:

for fitting circlips on bore holes

SKU	ID	DIM.
625127	536PLUS/1DP-US	140 (8-13mm)



INTERNAL LOCK RINGS PLIERS, BENT

- material: premium plus carbon steel
- drop forged, entirely hardened and tempered
- head polished
- surface finish: chrome plated to standard ISO 1456:2009
- tips black finish
- double plastic dipped handles
- made according to standard DIN 5256 form D

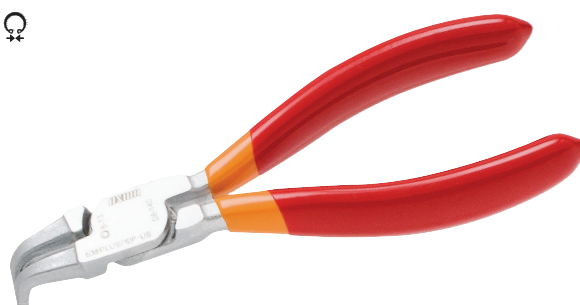
Advantages:

30% higher endurance in comparison to convenient lock rings pliers for diameter 8 to 100mm with inserted tips

Usage:

for fitting circlips on bore holes

SKU	ID	DIM.
625128	538PLUS/1DP-US	140 (8-13mm)



EXTERNAL LOCK RINGS PLIERS, STRAIGHT

- material: premium plus carbon steel
- drop forged, entirely hardened and tempered
- head polished
- surface finish: chrome plated according to ISO 1456:2009
- tips black finish
- double plastic dipped handles
- made according to standard DIN 5254 form A

Advantages:

30% higher endurance in comparison to convenient lock rings pliers with inserted tips for diameter 3 to 100mm

Usage:

for fitting circlips on shafts

SKU	ID	DIM.
625125	532PLUS/1DP-US	140 x 3-10



EXTERNAL LOCK RINGS PLIERS, BENT

- material: premium plus carbon steel
- drop forged, entirely hardened and tempered
- head polished
- surface finish: chrome plated to standard ISO 1456:2009
- tips black finish
- made according to standard DIN 5254 form B
- double plastic dipped handles

Advantages:

30% higher endurance in comparison to convenient lock rings pliers with inserted tips for diameter 3 to 100mm

Usage:

for fitting circlips on shafts

SKU	ID	DIM.
625126	534PLUS/1DP-US	140 x 3-10



AWL SET

SKU	ID	DIM.
617777	639PB	165



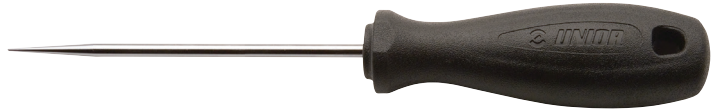
AWL WITH ROUND, DOUBLE BENT BLADE

SKU	ID	DIM.
617775	639C	165



AWL WITH ROUND STRAIGHT BLADE

SKU	ID	DIM.
617773	639A	165



AWL WITH ROUND, 90° BENT BLADE

SKU	ID	DIM.
617774	639B	165



AWL WITH ROUND, DOUBLE BENT SMALL BLADE

SKU	ID	DIM.
617776	639D	165





— WHEEL TOOLS



MASTER WHEEL BUILDING KIT

NEW

- Manufactured with high quality carbon steel to ensure minimal wear to tools and wheel components being worked on.
- Includes tools compatible with the most common nipple and spoke types.
- The Nipple Insertion Tool makes seating nipples through double wall rims quick and easy.
- Compact two layer foam storage box.

Kit includes the following tools:

- Speed nipple bit 2.5 mm
- Speed nipple bit 1.5 mm
- DT Swiss® SQUORX nipple tool
- Inverted square nipple driver
- Spoke nipple driver
- Spoke nipple insertion tool
- Mavic R-sys nipple wrench
- Spoke wrench, Mavic
- Spoke, bearing and cotter gauge
- Spoke wrench sizes TX20, 3.23, 3.30, 3.45, 4.0, 4.3, 4.4, 5.0, 5.5 mm
- Socket wrench 5.5
- Flat spoke holder
- Straight Pull Spoke Pliers

SKU	ID	DIM.
629377	1754	165



SPOKE WRENCH

NEW

The large wings allow precise and comfortable use while the spoke nipple is held in all 4 flats for secure operation.

- Die cast zinc alloy
- Zinc coated
- Ergonomic design
- Holds spoke nipple on all 4 flats
- Size 3.30 designed to work with 3.30 and 3.23 size spoke nipples
- Color coded sizes

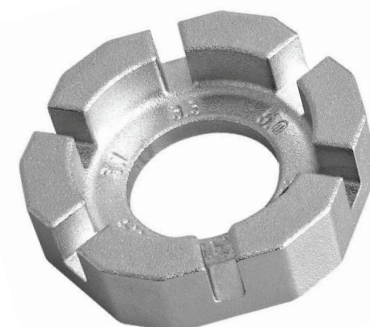
SKU	ID	DIM.
629293		3,3
629294	1630/5	3,45
629295		TX20



ROUND SPOKE WRENCH

- material: premium plus carbon steel
- drop forged, entirely hardened and tempered
- This wrench fits the popular spoke nipple flat sizes: 3.3 mm, 3.45 mm, 3.7 mm, 3.96 mm, 4.4 mm and 5mm. The shape adjusts perfectly to the hand and allows a comfortable work and easy grip.

SKU	ID	DIM.
616289	1631/2	3,3,3,45,3,7,3,96,4,4,5



SPOKE WRENCH

Spoke wrenches are designed to tighten nipples with flat diameter 3.3 mm to 3.45 mm. The form of wrench enables a perfect fit to the nipples without slippage and ensures efficient work.

SKU	ID	DIM.
616759	1630/2A	3.3
616845		3.45



HUB GENIE

- Hub Genie is a unique solution for removing hub end caps while servicing the hubs or converting them to different standards. Thanks to the expanding mechanism, which grabs the hub cap evenly from the inside, even the most stubborn hub end caps are easy to pull-off. Compared with the traditional way of removing hub end caps, this tool won't damage cups or hub. Simply genius.
- The tool is available in two versions; smaller one that covers hubs with 12 mm & 15 mm through axles and bigger version that works with 20 mm through axle hubs. Both versions feature plastic dipped handle for better ergonomics and grip.

SKU	ID	DIM.
627271	1758/4	20
627272		12 & 15



STRAIGHT PULL SPOKE PLIERS

Unior's straight pull spoke pliers is your ultimate solution for holding round straight pull spokes while building or truing wheels. Pliers feature ergonomic handles and smart spoke-locking mechanism, which enables firm grip during building or truing.

SKU	ID
628712	1753/2B-US



FLAT SPOKE HOLDER

- material: polyamide

SKU	ID	DIM.
617588	1632	357.5



PRO SPOKE WRENCH

- material: premium plus carbon steel
- surface finish: chrome plated according to ISO 1456:2009
- the key body is plastic-coated

Spoke wrench is used for nipples with dimensions 4,0 and 4,4 mm + 3,3 and 3,45 mm . Plastic-coated body enables comfortable tightening and unscrewing of the nipples.

SKU	ID	DIM.
624949	1633/2P-US	4 x 4,4
624950		3,3 x 3,45



DOUBLE SIDED SHIMANO® SPOKE WRENCH

- material: premium flex plus carbon steel
- surface finish: chrome plated according to ISO 1456:2009
- the key body is plastic-coated

Shimano Spoke wrench is used for nipples with dimensions 4.3 and 4.4 mm on Shimano® Wheel System. Plastic-coated body enables comfortable tightening and unscrewing of the nipples. The length of the wrench is 100 mm, which enables access to the nipples which are mounted on the wheel hub.

SKU	ID	DIM.
624951	1634/2P-US	4,3 x 4,4



DOUBLE SIDED SPOKE WRENCH

- material: premium flex plus carbon steel
- surface finish: chrome plated according to ISO 1456:2009
- the key body is plastic-coated

This wrench is used for nipples with 5 mm and 5.5 mm dimensions. Plastic-coated body enables comfortable tightening and unscrewing of nipples.

SKU	ID	DIM.
624953	1636/2P-US	5 x 5,5
628369		5,5 x 6



SPOKE WRENCH, MAVIC

- material: premium flex plus carbon steel
- surface finish: chrome plated according to ISO 1456:2009
- the key body is plastic-coated

The smaller end is used for nipples with a 5.65mm outside diameter, while the larger end is used for assembling and disassembling for tubeless Mavic rim inserts. Plastic-coated body enables comfortable tightening and unscrewing of the nipples.

SKU	ID
624952	1635/2P-US



MAVIC R-SYS NIPPLE WRENCH

Uniior's 1635/2AP Mavic spoke wrench is used for nipples with a 6.4mm outside diameter found on the new Mavic R-sys wheels. Plastic-coated body enables comfortable tightening and unscrewing.

SKU	ID	DIM.
624940	1635/2AP-US	5,5 x 6



CONE WRENCH, SINGLE SIDED

- material: premium flex plus carbon steel
- surface finish: chrome plated according to ISO 1456:2009
- double plastic dipped handles

The design and dimensions of our tools always adapt to new standards and bicycle models. The single sided cone wrench has a remarkable toughness, hardness, durability and tight fit. The ergonomic shape ensures good functionality. The cone wrench sits perfectly in the hand which makes the work fast and comfortable.

SKU	ID	DIM.
624920		13
624921		14
624922		15
624923		16
624924		17
624925		18
624926		19
624927		20
624928		22
624965	1617/2DP-US	23
624929		24
628173		26
624964		27
625022		28
624938		30
624915		32
624955		34
624916		36
624956		40



CONE WRENCH SET

- material: premium flex plus carbon steel
- surface finish: chrome plated according to ISO 1456:2009
- double plastic dipped handles

The design and dimensions of our tools always adapt to new standards and bicycle models. The single sided cone wrench has a remarkable toughness, hardness, durability and tight fit. The ergonomic shape ensures good functionality. The cone wrench sits perfectly in the hand which makes the work fast and comfortable.

SKU	ID	DIM.
626602	1617/2DPCB-US	40



HUB CONE WRENCH

- material: premium flex plus carbon steel
- surface finish: chrome plated according to ISO 1456:2009

The hub cone wrenches are intended for the home mechanics or professional users. The extreme thin design with pen end jaw fit four popular sizes. These cone wrenches are used by every cyclist for quick repairs and daily maintenance of bicycles.

SKU	ID	DIM.
615125	1612/2	13 x 14 x 15 x 17
615126		13 x 14 x 15 x 16



SET OF CONE WRENCHES

- material: premium flex plus carbon steel
- surface finish: chrome plated according to ISO 1456:2009

The hub cone wrenches are intended for the home mechanics or professional users. The extreme thin design with pen end jaw fit four popular sizes. These cone wrenches are used by every cyclist for quick repairs and daily maintenance of bicycles.

SKU	ID	DIM.
615120	1612PB	13/14 x 15/17. 13/14 x 15/16



SPOKE TENSION METER

How to use the tool:

Unior's universal spoke tension meter measures the spoke tension on any kind of spoke. The analog spoke tension meter arrives calibrated and ready to use. To use, simply press the handle, position the spoke between the two pins and release the handle. The properly designed gauge is easy to read. Measured value, needs to be checked in the spoke information table, from where you read the actual tension, based upon the spoke specification. The printed table is included with the tool, together with more precise usage instructions. Additional included feature on the tool is also a spoke thickness gauge, which helps with the whole process. Simply insert the spoke in one of the upper openings and read the spoken thickness value.

SKU	ID
623302	1752/2



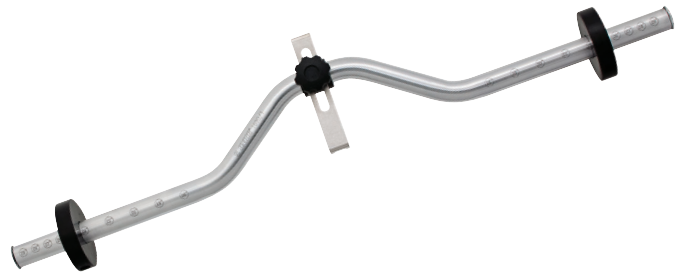
WHEEL ALIGNMENT GAUGE

- Material: construction steel, stainless steel and PE-polyethylene
- Precisely manufactured tools enable simple checking of wheels with dimensions from 16 to 29 inch, with or without tire.

How to use the tool:

The true checking tool is a tool designed to check the axle symmetry between the hub and the wheel rim. First we set an appropriate distance between the slides according to the wheel size. We lean the middle rest against the nave axle and put the frame with slides nearer to the rim so that the slides touch the rim. Then we fix the rest with a screw and check the other side of the wheel. This enables us to see if the nave is centered according to the rim. If the wheel is not centered, it needs to be trued up.

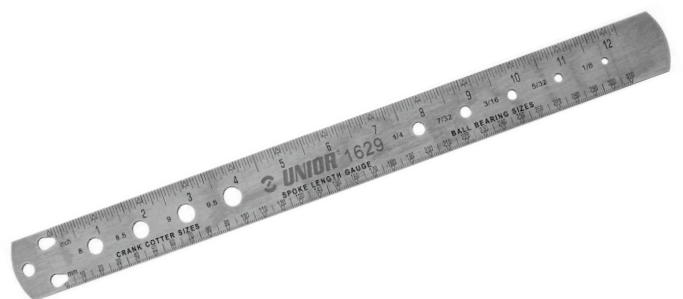
SKU	ID	DIM.
618486	1690/1	16" - 29"



SPOKE, BEARING AND COTTER GAUGE

This easy to use tool enables us to measure spokes dimensions and bearing and crank cotter diameters.

SKU	ID	DIM.
620561	1629	357.5



INVERTED SQUARE NIPPLE DRIVER

- Unior 1751/2Q is used for both normal and inverted nipples with 3.2 mm square head. The 90mm long stem enables work with deep aero rims as well as with all the normal rims. The professional metal handle gives perfect grip.

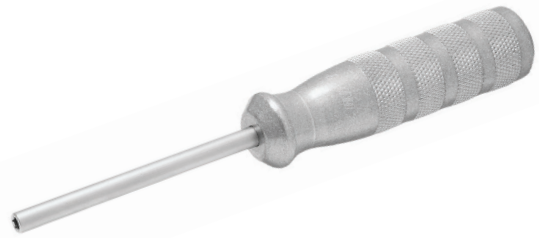
SKU	ID	DIM.
623298	1751/2Q	3,35 x 3,35



DT SWISS® SQUORX NIPPLE TOOL

- 1751/2DT screwdriver is used for DT Swiss® SQUORX nipples with torx shaped top head. The 80mm long stem enables work with deep aero rims as well as with all the normal rims. The professional metal handle gives perfect grip.

SKU	ID	DIM.
625552	1751/2DT	E 5



NIPPLE DRIVER

A must have wheel building tool. Rotating handle and the guide shape enables you to quickly screw the nipple onto the spoke. It supports standard shape nipples.

SKU	ID	DIM.
623297	1751/2	1,2



SPEED NIPPLE BIT

- Works with conventional nipples
- Threading nipples to the spokes is the most time consuming part of building wheels. Thanks to the speed nipple bit you can now do it with the cordless screwdriver, save yourself some time and still have all the nipples threaded on the spokes to the same depth.
- A protruding part in the center of the speed nipple bit keeps the nipple centered and prevents the tool from slipping off it. Eventually, as the nipple is fully threaded down the spoke, the protruding part of the tool touches the approaching spoke and unseats the driver. This enables that all the nipples are threaded down the spokes to the same depth, which leaves you with the perfect starting point to build great wheels.

SKU	ID	DIM.
626981	1756	1,5
626982		2,5



NIPPLE INSERTION TOOL

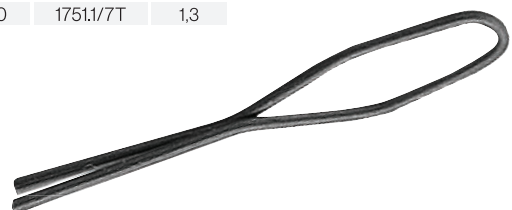
- The Unior nipple assembly tool is your best friend when building wheels. Its firm spring enables you, to simply attached the nipple and screw it through a double wall rim on the spoke. This way, you avoid losing nipples between the walls of the rim.
- The spring is interchangeable, item 1751.1/7T

SKU	ID	DIM.
623299	1751/2T	1,3



SPRING FOR NIPPLE INSTALLATION TOOL, 5 PCS SET

SKU	ID	DIM.
623300	1751.1/7T	1,3



SOCKET WRENCH WITH T-HANDLE

- material: premium chrome vanadium steel
- handle - polypropylene
- surface finishing: blade chrome plated according to ISO 1456:2009

SKU	ID	DIM.
625120	193N-US	5,5



SOCKET WRENCH WITH TBI HANDLE

- blade: premium hard chrome vanadium steel, entirely hardened and tempered
- blade chrome plated
- handle: ergonomic shape
- three component material
- hanging hole
- made according to standard DIN 3125

SKU	ID	DIM.
625213	629TBI-US	5,5



AXLE VICE

- material: premium flex plus carbon steel
- surface finish: chrome plated according to ISO 1456:2009

How to use the tool:

The vice features two different diameter receptacles of 9 mm and 10 mm for inserting front or rear axles. Fits into jaws of engineers vice. The axle vice is easy to use. Two inserted springs will open the jaws automatically when axle vice is removed from engineers vice.

SKU	ID
619715	1639/2





TIRE & TUBE TOOLS



SET OF TWO TIRE LEVERS

Our tire levers come as a set of two, shaped to interlock with each other for storage. They're made of glass fiber-reinforced plastic so they're super strong and durable. The broad tip makes it safer for use on carbon wheels, and the spoke hook makes it easy to use multiple levers for those really tight tires. Optimised for effective leverage and ergonomics.

- Ergonomic and easy to use
- High strength plastic ensures durability and no damage to rims
- Provide excellent leverage

SKU	ID
624142	1657BLACK
624144	1657RED
629382	1657ORANGE



SET OF TIRE LEVERS IN A BOX, 27 PAIRS

NEW

Our tire levers come as a set of two, shaped to interlock with each other for storage. They're made of glass fiber-reinforced plastic so they're super strong and durable. The broad tip makes it safer for use on carbon wheels, and the spoke hook makes it easy to use multiple levers for those really tight tires. Optimised for effective leverage and ergonomics.

- Set of 27 tire levers can be placed in a bicycle shop on the counter next to the cashier.
- Tire levers are fixed in a high quality cut out foam which can be refilled and reused for several times.
- Set includes orange, black and red tire levers.
- On the back side of the box you can find bar codes for each of the four items.

SKU	ID
626988	1657ST-US



SET OF TIRE LEVERS, 27 PAIRS

NEW

Our tire levers come as a set of two, shaped to interlock with each other for storage. They're made of glass fiber-reinforced plastic so they're super strong and durable. The broad tip makes it safer for use on carbon wheels, and the spoke hook makes it easy to use multiple levers for those really tight tires. Optimised for effective leverage and ergonomics.

- Set of 27 tire levers can be placed in a bicycle shop on the counter next to the cashier.
- Tire levers are fixed in a high quality cut out foam which can be refilled and reused for several times.
- Set includes orange, black and red tire levers.
- On the back side of the box you can find bar codes for each of the four items.

SKU	ID
627270	1657STR-US



SET OF TWO METAL TIRE LEVERS

- material: premium sheet metal
- surface finish: chrome plated according to ISO 1456:2009
- Metal tire levers are used on wheels where mounting and dismounting the tires with plastic tire levers is difficult or impossible.
- Unior's 1657/2A tire levers can be stuck behind the spoke, with help of the hook on the end of the lever.

SKU	ID
623387	1657/2A



VALVE CORE REMOVER

Valve core remover can install and remove Schrader and Presta valve cores. Precisely made from tool steel and hexagonal shape, which enables good grip.

SKU	ID
628912	1755/2



SCHWALBE TIRE TREAD CUTTER

- The Tread Cutter is the first of a kind plier designed to cut tire treads and was developed specifically for MTB tires. The main benefit of the pliers is the cutting height adjustment slider, which enables cutting of each tread on the same height and therefore making the custom tire the most optimal.
- Cutting tires produces more optimal riding. For example shortening centre treads on a mud tire, results for easier rolling. Or the transition lugs in the shoulder area can be trimmed, giving more free space, and making the tread more aggressive. Lugs that have been worn "round" can have a straight edge again.

SKU	ID	DIM.
624835	2730/4BI	300



TIRE SETTER

- material: premium plus carbon steel
- drop forged, entirely hardened and tempered
- surface finish: chrome plated to standard ISO 1456:2009
- double plastic dipped handles

The pliers are intended for fast straightforward tire removal - especially tires that have already bonded with the rim. Using the pliers, we compress the tire so that it detaches from the bead of the rim. A strong grip facilitates the removal of the tires. The well designed shape of the pliers enables the separation of the tire from the rim and ensures that the inner tube is not punctured when removing the tire. The pliers are chromed and laminated with plastic for a more comfortable grip.

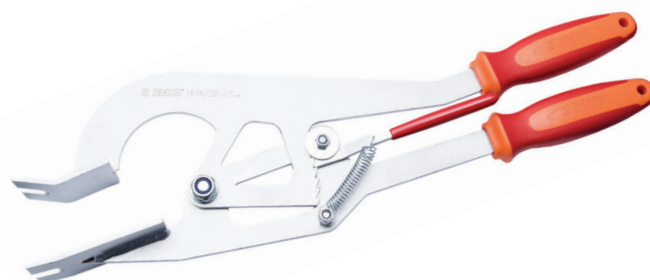
SKU	ID	DIM.
624948	1601/2DP-US	300



BIKE FRAME SPREADER TOOL

- material: premium flex plus carbon steel
- ergonomic heavy duty double component handle
- surface finish: chrome plated to standard ISO 1456:2009
- The bike pincers are designed for quick and easy removal of bike tires and tubes on older and city bikes with metal frames.
- The long handle enables you to generate sufficient force to loosen the rims allowing you enough space to simply remove the tire or tube from the wheel without having to dismount the entire wheel. Thanks to its spring lock, the tool will always remain in position allowing you to use it single handedly.

SKU	ID
624944	1678/2BI-US





**WHEEL TRUING STANDS
& ACCESSORIES**



PRO TRUING STAND

NEW

- We redesigned many of its features. The base has been made stronger for improved precision and we also added conical one-size-fits-all magnetic thru-axles adapters that can be stored anywhere on the base. The arms have been made longer to accommodate 29+ wheels better and the calipers widened accordingly.
- Threads, springs and bearings were all revised resulting in smoother operation plus less frequent calibration. Additionally, we include white high-gloss stickers you can apply to the base and caliper arm to improve background contrast, making it easier than ever to use.

Here is a full list of the improvements.

- Stronger base for improved precision
- Longer and redesigned upright arms for improved clearance of 29+ wheels and truing precision
- Wider calipers for increased clearance of 29+ wheels
- Accommodates wider axles, works with through axle hubs up to 197mm width (include the use of adapters). Max. arm opening 230mm (without the use of adapters).
- New bearings on the upright arm adjust axle are spring loaded for improved precision and reduced frequency of calibration
- Redesigned caliper tips for easier radial truing
- Revised threads and springs for smoother operation
- 8mm bench mount holes at the bottom, 268 mm center to center
- Slicker design, all black
- Comes with conical magnetic through axle adapters – one size fits all (12, 15 and 20). The adapters are now magnetic and can be affixed anywhere on the base. Features a bolt for more permanent fix on the upright arms.
- Includes white high gloss stickers, covering the base and caliper arm, for improved background contrast (stickers are not preapplied)

Compatibility:

- Accepts wheels from 16 to 29+ inch with or without tire.
- Supports solid, quick release and through axle hubs
- Through axle hubs are supported with use of the adapters (included with truing stand)
- One pair of through axle adapters support all sizes of through axles

Standard features (same as before):

- The geometry of the callipers enables a simultaneous axial control for accurate truing of the rim.
- The calipers have plastic coated tips to prevent scratching the rim.
- The upright arms position can be adjusted with an upright adjustment knob to fit the axle width. The caliper arm position can be adjusted to fit the wheel radius and the caliper tip distance can be adjusted to fit the rim width.
- When changing the wheel, the spring loaded upright arms and the caliper arm can be quickly pulled away, automatically springing back to a set position when inserting a new wheel. This enables faster truing of several same size wheels.

SKU	ID
629297	1689



WOODEN BASE FOR 1689

NEW

- Sturdy base for the Pro Truing Stands V1 and V2
- Prevents scratching your wood or stainless-steel bench top
- Beech plywood with rounded edges
- Pre-drilled holes for truing stand mounting, mounting bolts included
- Two handy trays for storage of items such as spoke wrenches
- Unior Made For Work logo burned into wood

SKU	ID	DIM.
629368	1689.9	328x300x18

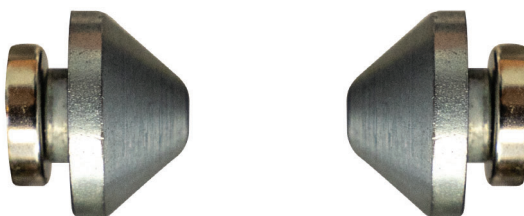


AXLE ADAPTOR

NEW

- Through axle adapters are compatible with 12, 15 and 20mm standards.
- Magnetic so you can store them anywhere on the stand when not in use.
- Bolts to hold them securely in place in use.

SKU	ID
629321	1689.3



PORTABLE TRUING STAND

- material: premium flex plus carbon steel
- It is possible to center wheels with dimension from 16 to 29 inch, with or without tire.
- Supports hubs up to 157 mm width.

This stand is intended especially for the enthusiast. It is very easy to use, light (2.3 kg) and does not take up much space. The left bracket is fixed and welded to the lower profile, while the right bracket is flexible to different all axle widths.

How to use the tool:

- The stand can be folded by folding the leg to the lower profile.
- The stand can also be mounted on the work bench with screws to increase stability.
- The control sensor is single sided so first the wheel shall be centered on one side, then turned around and centered on the other side.
- The additional function enables true checking of wheel discs.

SKU	ID
623060	1688



POCKET WHEEL TRUING TOOL

- Home users, cycling team mechanics, world travelers and others cyclist can use the Unior 1753/6 truing tool to work on wheels anywhere they go. With the velcro strap the tool can be mounted to any front fork and rear seat stay of the frame.
- The indicator is then used normally as on other truing stands. The tool can be also used for truing rotors.
- The 1753/6 pocket truing tool is light and small and easily fits in any back pack.

SKU	ID
623310	1753/6



FAT BIKES CALIPERS FOR PRO TRUING STAND

Calipers for fat bikes are compatible with Unior professional truing stand 1689. Calipers support wheel truing of rims from 50 – 100mm width with tires up to 5.0 width.

SKU	ID
626456	1689.7



ROTOR TRUING GAUGE

- It enables us true checking of brake discs.
- Brake caliper is used on the 1689 professional wheel centering stand.

SKU	ID
622603	1689.2



CANNONDALE LEFTY® ADAPTOR FOR TRUING STAND

- Unior's 1689.6 Lefty adaptor is used for truing Cannondale's Lefty® front wheels, which have specific asymmetric shape and dimension and therefore cannot be used on the centering stand with normal adaptors.

Compatible with:

- Lefty 50 - Standard hub
- Lefty 60 - Supermax hub

SKU	ID
623450	1689.6



RIM CALIPER FOR 1688

Spare part for 1688 wheel centering stand for home use.

SKU	ID
621616	1688.2



SPARE TIP FOR CALIPER

Spare plastic tip for calipers 1688.2, 1689.2, 1689.4 on stands 1689, 1688.

SKU	ID
623256	1689.5



PRO TRUING STAND CALIBRATION TOOL

- Calibration tool allows you to calibrate the Pro truing stand and ensure the calipers and arms are centered with each other.
- For best calibration results choose the correct calibration tool for your truing stand.
- Pro truing stand V1, black and chromed finish, choose calibration tool 629229.
- Pro truing stand V2, black finish (available from June 2022), choose calibration tool 629288.

SKU	ID	DIM.
629229	1689.1	160
629288		180





REPAIR STANDS &
ACCESSORIES



BIKEGATOR REPAIR STAND

The Bike Gator! The new generation of Unior 1693A(1693AS) bike stand.

- The bike repair stand is the basic working tool both for service workshops and cycling enthusiasts.
- It is easy to assemble and the support tubes are fold together enabling easier transportation between work place.
- Maximum load capacity is 30kg
- Suitable for tubes with diameter of min. Ø24 mm and max. Ø32 mm.
- Weight of the stand without tool tray is 5.7kg
- Replaceable rubber jaw covers, item 1693.11
- Code 623222 article 1693AS is stand with support tubes and jaw with adjustable nut

Advantages:

- The stand features a new array of precision aluminum and steel parts which offer stiffness and durability.
- NEW Jaw mount and rotation system.
- improved sliding system
- NEW stylish metal tool tray with interchangeable SOS foam insert.

SKU	ID	1	2	MIN Ø	MAX Ø	MAX	
627768	1693AQ0		X	22 mm	60 mm	30 kg	5,7 kg
625148	1693AS0-US	X		24 mm	40 mm		5,7 kg

1 MANUAL-ADJUST



2 QUICK RELEASE



BAG FOR BIKEGATOR BIKE STAND

- Strong and quality made bag is intended for protection and carrying of the 1693A (1693AS) BikeGator stand.
- It features shoulder and hand straps, two level storage for stand frame and separated jaw and tool tray.
- Useful to carry on plane, in the car or just to store in your workshop.
- material: polyester fabric

SKU	ID	DIM.
624035	1693BAG	1100x300x10



TOOL TRAY FOR REPAIR STANDS

- Tool tray is distinguished by nicely separated opened drawers with additional space for hanging different tools. Tray fits with all the Unior stands.
- The 1693.3 new tool tray consists out of a strong thin metal plate with two rails and an stylish SOS foam tray.
- The foam tray is interchangeable, item code 1693.6.
- The tool tray fits into the new generation of 1693 stands (made after July 2014).
- Check with you local distributor for compatibility.

SKU	ID
623820	1693.3



PRO REPAIR STAND WITH SINGLE CLAMP

- Repair bike stand with fixed plate is designed for service workshops and every day use.
- Fixed plate is ergonomically designed. Maximum load capacity is 30kg, which enables the servicing of heavier bikes.
- Suitable for tubes with diameter of min. Ø24 mm and max. Ø32 mm.
- weight of the stand is 36kg
- Replaceable rubber jaw covers, item 1693.11

SKU	ID	1	2	3	4	5	6	MIN Ø	MAX Ø	MAX	📦
627769	1693BQ			X		X	X	22 mm	60 mm	30 kg	36,8 kg
625011	1693B-US	X				X	X	24 mm	32 mm		36,6 kg
625013	1693BS-US		X			X	X	24 mm	40 mm		36,6 kg
629508	1693BM				X	X	X	20 mm	110 mm		38 kg

1 AUTO-ADJUST



2 MANUAL-ADJUST



3 QUICK RELEASE



4 MASTER CLAMP



5 TOOL TRAY



6 FIXED PLATE



FRAME FOR SINGLE CLAMP PRO REPAIR STAND, WITHOUT CLAMP AND PLATE

SKU	ID
623248	1693.5B



FIXED PLATE FOR 1693B

SKU	ID	DIM.
623231	1693.4B	572x572x12



PRO REPAIR STAND WITH DOUBLE CLAMP

- Repair bike stand with fixed plate and two clamps is designed for service workshops and more demanding users.
- Stand enables work for two mechanics at the same time on two bikes.
- The new plastic cup enables storage of tools and spare parts.
- Fixed plate is ergonomically designed. Maximum load capacity is 45kg, which enables to service heavier bikes.
- Stand is adjustable by height between 947 and 1570 mm.
- Weight of the stand is 56,5kg.
- Additional accessories - paper roll holder.
- Suitable for tubes with diameter of min. Ø24 mm and max. Ø40 mm.
- Replaceable rubber jaw covers, item 1693.11

SKU	ID	1	2	3	4	5	MIN Ø	MAX Ø	MAX	
627771	1693CQ		X		X	X	22 mm	60 mm		56 kg
625017	1693CS-US	X			X	X	24 mm	40 mm	2 x 30kg	55 kg
629507	1693CM			X	X	X	20 mm	110 mm		58,5 kg



1 MANUAL-ADJUST



2 QUICK RELEASE



3 MASTER CLAMP



4 TOOL TRAY



5 FIXED PLATE



FRAME FOR DOUBLE CLAMP PRO REPAIR STAND, WITHOUT CLAMPS AND PLATE

Build your own bike repair stand with 2 clamps. You can choose between 3 different clamps (1693.1, 1693.1S, 1693.1Q), add a fixed plate to the frame (1693.4C) or just fix the frame into the floor.

SKU	ID
623249	1693.5C



FIXED PLATE FOR 1693C

SKU	ID	DIM.
623232	1693.4C	698 x 698 x 12



ELECTRIC REPAIR STAND

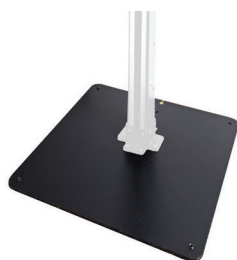
Designed and developed for technicians to work smarter, not harder. The stand is constructed around heavy-duty one-piece aluminum column, which gives a great stability and at the same time holds all wires on the inside, so there's nothing in a way when working on a bike. It is strong enough to lift even the heaviest bicycles to the desired height with ease, so the bicycle is always in the most ergonomic position to work on. Electric repair stand is not just powerful, but also smart. It features endless height adjust, but it can also lift or descend a bike automatically with a push of a button. It also stops on its own when bike reaches the ground. Thanks to the travel adjust limiters; you can limit its travel, so it always stops at the desired height. Built in safety system keeps the technician and the bicycle on the stand safe and makes sure nothing goes wrong.

Features:

- Automatic stopping system with a built in safety feature to keep technician and bicycle on the stand safe
- Endless height adjust
- Travel adjust limiters
- Main electricity supply cable coming in from the top of the stand, so nothing is in the work area
- Hidden wires
- Two USB A charging port
- Equipped with Master shop repair clamp 1693.1M
- Anti-slip clamp interface
- Main column made of steel and bolted together creating a super rigid frame
- Secures directly to the floor or on a heavy-duty metal fixed plate
- Optional heavy-duty large fixed plate with floor leveling function
- No assembly needed, just fix it in place, plug in the electricity and start working
- Technical specifications:
 - Measurement: W750xL750xH2072 mm
 - Weight: 106 kg (with a steel fixed plate)
 - Maximum height: 1780 mm
 - Load capacity: 400N (40kg)
 - Power: 0,25 kW
 - Steering voltage: 5 V
 - Input: 220-240 V; 50 Hz
 - Movement speed: 3.3 m/min
 - IP rating: IP30 – inside use only
 - Noise level: 55 dB
 - CE compliant

220V		110V		
SKU	ID	SKU	ID	1
628687	1693EL	628789	1693EL-110	X
628742	1693EL1	628790	1693EL1-110	

1 FIXED PLATE



HEIGHT EXTENSION KIT FOR 1693EL

- Do you or your employee(s) fit in the taller category? Or you would like to access the bicycle from a different angle?
- Height extension kit is a perfect solution for taller technicians as it lifts the highest and the lowest position of the clamp on your electric repair stand 25 cm higher. As the bicycle can be lifted higher from the ground it also enables a view and access that was previously not possible or at least not practical.
- Extension mounts between the electric repair stand column and the metal fixed plate or the floor. The height extension kit is only compatible with the Unior electric repair stands with the aluminum main column.

SKU	ID
629165	1693EL.11



FIXED PLATE FOR 1693EL

SKU	ID
628743	1693EL.1



REMOTE CONTROL SET

- Control your electric repair stand wireless from your bench, without ever touching the buttons on the stand's control panel. Buttons on the electric repair stand remote have the exact same double functionality as buttons on the control panel on the electric repair stand. Most practical functions are to lift/lower the bike to the height of the adjustable limiter or to the floor or hold & release the button at the desired height.
- Remote Control Set 1693EL.20 includes the remote and small circuit board that is super easy to install; installation will only take couple of minutes and doesn't require any pairing or additional setting when installed. Coded remote signal will prevent interfering with other remotely controlled repair stands in the same room.
- Remote Control Set 1693EL.20 is compatible with Unior's Electric Repair Stand 1693EL version 2.0, delivered from April 2021 and onwards.

SKU	ID
626223	1693EL.20



CLAMPING BRACKET WITH HANDLE FOR CLAMP FOR 1693EL

Mounting bracket for clamp of the electric repair stand, including the locking T-handle.

SKU	ID
629166	1693EL.12



LAPTOP HOLDER WITH FOLDABLE ARM FOR 1693EL

Foldable laptop holder mounts to the Union's electric repair stand column and provides optimal placement for laptop. The setup will make work more comfortable and productive as the computer will be right where you need it and you'll not have to turn around to the workbench to access it. Tray is large enough to support laptops up to the size 15" and can rotate for 90 degrees left or right. Foldable arm is 500 mm long and allows to pull the laptop over the bike, closer to you, or move it out of work area when not in use.

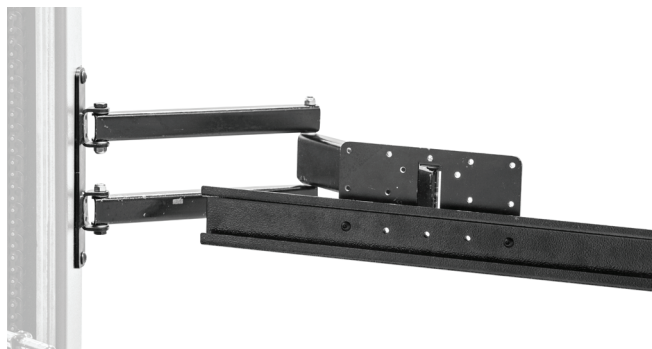
SKU	ID
629025	1693EL.2



SMALL PARTS ORGANIZER WITH FOLDABLE ARM FOR 1693EL

- Foldable small parts organizer mounts to the Union's electric repair stand column and provides optimal placement for it. The setup will make work more comfortable and productive as the smaller parts will be right where you need it and you'll not have to turn around to the workbench to access it. Parts organizer can be rotated 90° left or right, foldable arm is 500 mm long and allows to pull the organizer over the bike if needed or fold it out of work area when not in use. Organizer is compatible with all sizes of plastic boxes in our range.
- Plastic boxes are not included with organizer and are sold separately.

SKU	ID
629026	1693EL.3



TABLET HOLDER WITH FOLDABLE ARM FOR 1693EL

Foldable tablet holder mounts to the Union's electric repair stand column and provides optimal placement for tablet. The setup will make work more comfortable and productive as the tablet will be right where you need it and you'll not have to turn around to the workbench to access it. Holder features protective rubber on the surface to prevent tablet from scratching and adjustable arm to accommodate tablets with width from 210 mm to 340 mm. Holder mounts under 67 degrees angle for easier swiping and better view and can be rotated 90 degrees left or right. Foldable arm is 500 mm long and allows to pull the holder over the bike if needed or move it out of work area when not in use.

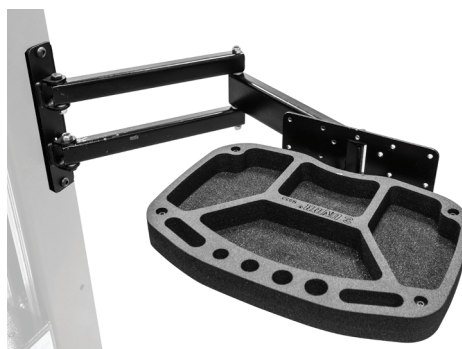
SKU	ID
629027	1693EL.4



TOOL TRAY WITH FOLDABLE ARM FOR 1693EL

Foldable tool tray mounts to the Union's electric repair stand column and provides optimal placement of tool tray. Tray will be right where you need it, providing perfect placement for the tools and small parts, thus increasing work productivity as you will not need to rotate to the workbench. Tool tray can rotate for 90 degrees left or right. Foldable arm is 500 mm long and allows to pull the tool tray over the bike if needed or move it out of work area when not in use. Tool tray is made of thin metal plate and SOS foam tray, with room to hang different tools and open compartments for storage.

SKU	ID
629028	1693EL.5



FRAME MOUNT TABLET HOLDER FOR 1693EL

Tablet holder mounts to the Unior's electric repair stand column and provides optimal placement for tablet. The setup will make work more comfortable and productive as the tablet will be right where you need it and you'll not have to turn around to the workbench to access it. Holder features protective rubber on the surface to prevent tablet from scratching and adjustable arm to accommodate tablets with width from 210 mm to 340 mm. Holder mounts under 67 degrees angle for easier swiping and better view.

SKU	ID
629029	1693EL.6



FRAME MOUNT TOOL TRAY FOR 1693EL

Tool tray mounts to the Unior's electric repair stand column and provides optimal placement of tool tray. Tray will be right where you need it, providing perfect placement for the tools and small parts, thus increasing work productivity as you will not need to rotate to the workbench. Tool tray is made of thin metal plate and SOS foam tray, with room to hang different tools and open compartments for storage.

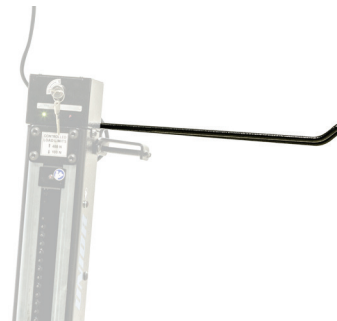
SKU	ID
629030	1693EL.7



FRAME MOUNT PAPER TOWEL HOLDER FOR 1693EL

Paper towel holder mounts to the Unior's electric repair stand column and provides optimal placement for it. The setup will make work more comfortable and productive as the paper towel will be right where you need it and you'll not have to turn around to the workbench to access it.

SKU	ID
629031	1693EL.8



FRAME MOUNT HOLDER FOR SMALL PARTS ORGANIZER FOR 1693EL

- Small parts organizer mounts to the Unior's electric repair stand column and provides optimal placement for it. The setup will make work more comfortable and productive as the smaller parts will be right where you need it and you'll not have to turn around to the workbench to access it. Organizer is compatible with all sizes of plastic boxes in our range.
- Plastic boxes are not included with organizer and are sold separately.

SKU	ID
629032	1693EL.9



MASTER SHOP REPAIR CLAMP

Our most durable and rigid clamp is designed to support even the heaviest bikes. Clamp frame design enables the jaws to open and close parallel to each other and thus clamp the bike gently and securely in place. Thanks to round shape of clamping jaws, clamping force is distributed evenly around the clamping area. Low profile design of clamping jaws only requires 5 cm of exposed seat post for clamping. Jaws are covered in grippy replaceable rubber covers. Clamp is operated via ergonomically shaped rotating handle, which allows precise control of the clamping force. Master Shop Clamp mounting adapter is interchangeable and fits adapters for repair stands of other brands (parts not included).

- Durable and rigid, designed to support even the heaviest bikes.
- Round shape of clamping jaws allows clamping force distribution over the whole clamping area.
- Low profile, only 5 cm of exposed seat post needed to clamp the bike.
- Replaceable rubber jaw covers.
- Ergonomic rotating handle for great control of the clamping force.
- The clamp is compatible with all current Unior repair stands.
- Interchangeable adapter for compatibility with repair stands of other brands (parts not included).
- Made in Europe.

SKU	ID
629164	1693.1M



PRO SHOP CLAMP

- Pro Shop Clamp is Unior's high-end offer for bike shops. It features advanced quick release system that enable quick and efficient work on any bicycle.
- Quick release system enables the mechanic to press the jaws by hand, at which point clamp already grips the seat post of a frame with sufficient force to hold the bicycle in place. Rotate the handle and additional tension is applied to the jaws to ensure firm grip.
- Clamp can grip tubes of any shape, with diameter of minimum Ø22mm to maximum Ø60mm.
- Pro Shop Clamp has a quick release button, which is used to release the jaws after initial tension release with the rotating handle.
- Height of the jaws is 70mm, so it works with smaller sizes of seat posts as well as with dropper posts.
- The clamp is compatible with all of Unior's repair stands.

SKU	ID
627095	1693.1Q



PRO REPAIR CLAMP, AUTO ADJUSTABLE

- Suitable for tubes with diameter of min. Ø24 mm and max. Ø32 mm.
- Jaws of the clamp are automatically adjusted by spring. To clamp the part just insert the clamped part between the jaws and close it with the handle. To release the part, open the handle.

SKU	ID
629233	1693.1-US



PRO REPAIR CLAMP, MANUALLY ADJUSTABLE

- Suitable for tubes with diameter of min. Ø24 mm and max. Ø40 mm.
- Easy accessible screw enables us, to modify the jaw opening and pressure when closed. The screw can be turned by hand without use of any wrench.

SKU	ID
629232	1693.1S-US



WALL OR BENCH MOUNT CLAMP, QUICK RELEASE

- Bench or wall mount option.
- Intended for professional and home workshops.
- Clamp can grip tubes of any shape, with diameter of minimum Ø22mm to maximum Ø60mm.

SKU	ID
627773	1693.2Q



WALL OR BENCH MOUNT CLAMP, AUTO ADJUSTABLE

- Bench or wall mount option.
- Intended for professional and home workshops.
- Suitable for tubes with diameter of min. Ø24 mm and max. Ø32 mm.

SKU	ID
625020	1693.2-US



WALL OR BENCH MOUNT CLAMP, MANUALLY ADJUSTABLE

- Bench or wall mount option.
- Intended for professional and home workshops.
- Suitable for tubes with diameter of min. Ø24 mm and max. Ø40 mm.
- Easy accessible screw enables us, to modify the jaw opening and pressure when closed. The screw can be turned with hand, without use of any wrench.

SKU	ID
625021	1693.2S-US



STAND BODY FOR 1693.2

SKU	ID
623251	1693.25



PRO ROAD REPAIR STAND

- Pro Road Repair Stand with plate is a sophisticated product, developed in cooperation with some of the best World Tour mechanics.
- The stand has a fork mount system and is specially designed to work on bikes, where standard clamping-system is not suitable to use.
- Stand is built from strong aluminum and steel parts and is suitable for workshop use, due to its steel plate, which offers great stability
- The upper assembly is angle adjustable, while the complete stand is adjustable by height.
- The stand is suitable for work on mountain bikes as well.
- The stand can be also upgraded to support bicycles with through axles, with additional through axle adaptor – article number 1693R.2.

SKU	ID	1
628794	1693RP1	
628353	1693RP	X

1 FIXED PLATE



PRO ROAD REPAIR STAND

- Pro Road Repair Stand is a sophisticated product, developed in cooperation with some of the best World Tour mechanics.
- Stand is built from strong aluminum and steel parts and only weights 5,1 kg.
- In comparison to traditional three-leg fork mount stands, Unior's double-leg design takes up less space once unfolded and offers mechanic more working space. Stability of the stand is equal as with three-leg designs.
- The upper assembly is angle adjustable, while the complete stand is adjustable by height.
- The stand is suitable for work on lighter mountain bikes as well.
- The upper assembly is also compatible with Unior's Pro Workshop stands with plate.
- The stand can be also upgraded to support bicycles with through axles, with additional through axle adaptor – article number 1693R.2.

SKU	ID
627529	1693R



THROUGH AXLE ADAPTOR FOR 1693R

Through axle adaptor is compatible with 1693R series road stands. It enables fixation of bikes with 12 mm or 15 mm through axles. To mount the bicycle on the adaptor, simply remove the wheel from the bike and install the bike's through axle back in to the fork or frame; adaptor then clamps the through axle and secures the bike in place.

SKU	ID	DIM.
628710	1693R.2	12/15mm



FIX IT YOURSELF WITH STAINLESS STEEL PUMP

Fix-it-yourself bicycle repair stand is used in public places: along bike trails, bike parks, campsites, in front of hotels, city centers and other tourist destinations, especially popular with cyclists. Stands are equipped with tools for basic repair and a high quality outdoor specific steel pump. On the stand, you can find an adjustable wrench, chain tool, Schrader & Presta valve tool, set of hex wrenches (2.5–8), spoke key 3.3, 3.45 and DT, TX wrenches 10, 25, PH and flat screwdriver, cone wrenches sizes 13, 14, 15, 17 and set of tire levers.

- Bike can be hung on the stand on the specially designed hangers, protected with rubber.
- All tools are attached to a strong wire and when not used, are neatly stored inside the stand frame.
- The stand must be bolted to the ground. The bolts are not included.

Caution!

- Bike stand fix it yourself and tools are subjected to extremely different weather influences, which significantly increases the possibility of corrosion. This condition falls under normal use and wear, requiring intensive care of tools on a DIY stand. Instructions for care and use are explained in the attached instructions.

SKU	ID
628425	1693ES

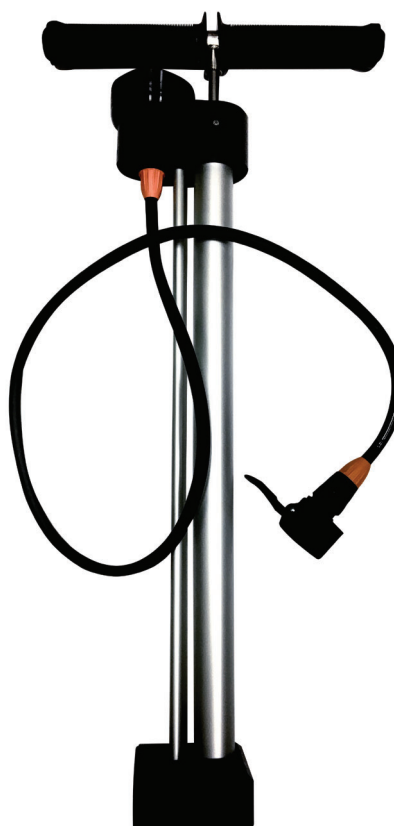


OUTDOOR STAINLESS-STEEL PUMP FOR STANDS 1693E AND 1693ES

Pump is intended for outdoor use on stands 1693E and 1693ES and works on all versions of stands.

- housing is made from aluminum
- handle and the cartridge tube are made from stainless steel.
- rubber grips
- manometer goes up to 10bar – filled with silicone liquid and made from stainless steel
- SKS Multivalve head

SKU	ID
629021	1693ES.OSPUMP



SOS SPARE TOOL TRAY FOR 1693.3 TRAY

Spare SOS foam tray for 1693.3 tool tray.

SKU	ID
623821	1693.6



TOOL TRAY FOR REPAIR STANDS

- Tool tray is distinguished by nicely separated opened drawers with additional space for hanging different tools. Tray fits with all the Unior stands.
- The 1693.3 new tool tray consists out of a strong thin metal plate with two rails and an stylish SOS foam tray.
- The foam tray is interchangeable, item code 1693.6.
- The tool tray fits into the new generation of 1693 stands (made after July 2014).
- Check with you local distributor for compatibility.

SKU	ID
623820	1693.3



REPAIR STAND TOOL TRAY COLLAR

- The collar allows attachment of the tool tray and other accessories on classic repair stands, in any chosen position or height. The collar can be easily installed on the upper sliding tube of the repair stand and fixed in place with the quick release lever. All Unior 1693 series repair stands allow attachment of one tool tray, this collar allows simultaneous attachment or additional tool tray or other accessories.
- Fits all Unior 1693 models of classic repair stands made after July 2014.

SKU	ID
629065	1693.16



REPLACEABLE RUBBER COVERS FOR CLAMP 1693.1, 2 PCS SET

SKU	ID	DIM.
621961	1693.11	96,5
627266		70



ADJUSTABLE SCREW FOR CLAMP 1693.1 AND 1693.1S

Replacement of the spring with the screw, enables us to modify the jaw opening and pressure when closed. The screw can be turned with hand, without use of any wrenches.

SKU	ID
623205	1693.12



REPLACEABLE RUBBER COVERS FOR CLAMP, ROUND, 2 PCS SET

Set of two replacement rubber covers for Master shop repair clamp 1693.1M.

SKU	ID
626337	1693.17





UNIOR

UNIOR BIKE TOOLS

UNIOR

UNIOR

UNIOR

UNIOR

UNIOR





BIKE STORAGE



EVENT STAND

- Event stand helps you store up to 10 bikes by the saddle. Useful at outdoor races and events as well as for indoor storage.
- Event stand can be used in long or short version: Length of useful bike holding area in the long version is 2090 mm and in short version 1260 mm. Length is easily adjustable with a connecting tube.
- Stand comes in a compact bag that stores all the parts securely and it's easy to carry around.
- Stand is made from aluminum parts and weights only 7.5kg in longer version.

SKU	ID
625500	1693F



BANNER FOR EVENT STAND 1693F, SET 2 PIECES

- Banner is made of durable canvas and is attached to the A frame of the Event Stand with zip ties through metal grommets.
- We offer custom banners for your Event Stand 1693F. You can have your company, team or shop logo printed on the banner and get more people to see it.
- Contact us for more details about custom banner.

SKU	ID
627083	TRAN.1693F



DISPLAY STAND, ADJUSTABLE

- Don't hassle with the placement of your bike, leave it in the garage, place it on the shop floor or display it in your living room. Any bike, anywhere. Unior's adjustable floor stand is suitable for everything from kid's bicycles to big 29+ monsters. Top part is adjustable in height (for 123 mm) and angle, while the rubber layer protects your frame against scratches. Slot is wide enough to accommodate all popular rear axle dimensions.
- Stand is made out of stainless steel and offers great stability, regardless of the bicycle's weight. Base of the stand is equipped with high-quality rubber inserts that prevent movement and protect floor surface. Black finish guarantees compatibility with any style of shop, office or home.

SKU	ID
626542	1693H



BIKE LIFT

- Weight capacity: 50 lb or 22,5 kg.

How to use the tool:

The bike lift is a simple device which enables a bike to be stored under the ceiling. The lift assembly is fixed to the ceiling. The bike can be raised or lowered by using the rope.

SKU	ID
618371	1684





— TOOL SETS



BMX KIT

NEW

- 43 carefully selected high-quality Unior tools.
- All the tools you might need servicing a BMX bike.
- Foam trays with cutouts to keep tools organised.
- Dust and waterproof case will make sure tools will be always securely stored.

Set includes:

- Set of 9 ball-end hexagonal wrenches. Sizes included 1.5, 2, 2.5, 3, 4, 5, 6, 8, 10 mm
- Torx wrenches TX 15, TX 20, TX 25
- Pro Socket Handle
- Pedal wrench
- Tools for removal and installation of BMX freewheels
- Chain tool (compatible with 11 and 12 speed chains)
- Master Link pliers
- Chain wear indicator
- Round spoke wrench
- Bottom bracket wrench 16 notch
- 2-in-1 Disc Brake Tool
- Cable housing cutters
- Flat and PH screwdriver
- Set of two tire levers
- Crank cap tool and chainring nut wrench
- Plastic hammer
- Universal parallel jaw pliers
- Open end wrench 8 x 10

Advantages:

- 43 carefully selected pro-grade Unior tools
- Three SOS foam trays with cut outs for all tools, one in the lid and two at the bottom of the case
- Foam cutouts feature laser engraved names/codes of the tools
- Waterproof and dustproof in accordance with IP67 certificate
- Watertight seal around lid
- Automatic pressure release valve
- Easy to open/close double throw latches
- Load tested soft grip handle
- Robust case from heavy-duty composite

SKU	ID
629345	1600BMX



BMX ROLL SET

NEW

- Unior's Tool Wrap is a great solution for BMX riders who want to be ready for everything on race day or just perform a quick fix at home.
- The roll is compact, light, and easy to store in your backpack or your car.

Great selection of BMX specific tools:

- Long ball end hexagon wrench, sizes 1.5, 2, 2.5, 3, 4, 5, 6, 8, 10 mm
- Cable housing cutters
- Chain wear indicator
- Set of two tire levers
- Chain tool
- Master link pliers
- Pedal wrench
- Open end wrench 8 x 10

Roll features:

- Aluminum eyelets for mounting the wrap on a car seat headrest
- Strong Velcro® straps for secure closure
- Side pockets with full flaps for parts or additional tools
- Additional elastic straps for even more tools
- Made from coated PU material, waterproof and oil resistant
- Space to fit mini pump also

SKU	ID
629349	1600BMX-ROLL



HOME KIT

34 carefully selected high-quality Unior tools are enough for much more than just basic maintenance on just about any bike. Foam trays with cutouts will keep tools organized, while the dust and waterproof case will make sure tools will be always securely stored. Included additional blank foam tray gives room for tool case personalization, it can be cut to include some of your favorite tools or removed for extra storage space.

Set includes:

- set of 9 ball-end hexagonal wrenches. Sizes included 1.5, 2, 2.5, 3, 4, 5, 6, 8, 10
- Torx wrenches set 10, 15, 25, 27, 30
- Pro Socket Handle
- Crowfoot pedal wrench
- Tools for removal and installation of the cassette
- Chain tool (compatible with 11 and 12 speed chains)
- Master Link pliers
- Chain wear indicator
- Round spoke wrench
- Bottom bracket wrench 16 notch
- 2-in-1 Disc Brake Tool
- Cable housing cutters
- Flat and PH screwdriver
- Set of two tire levers
- Crank cap tool and chainring nut wrench
- Cone wrenches, sizes 13, 14, 15, 16, 17
- Measuring tape 2m/6ft

Advantages:

- 34 pieces of carefully selected high-quality Unior tools
- Two SOS foam trays with cut outs for all of the tools, one in a lid and one at the bottom of the case
- Foam cutouts feature laser engraved names/codes of the tools
- Additional blank SOS foam tray for tools storage
- Waterproof and dustproof in accordance with IP67 certificate
- Watertight seal around lid
- Automatic pressure release valve
- Easy to open/close double throw latches
- Load tested soft grip handle
- Robust case from heavy-duty composite



SKU	ID
629070	1600HOMEKIT-US



PRO KIT

- Pro Kit tool case is real world designed and tested by the professional mechanics on the toughest races around the world.
- Well thought out, extremely durable tool pallets organize and hold your tools in place. Pockets are designed with the size of our tools in mind. It also features a few extra pockets leaving you room to personalize your kit.
- After designing the tool case for Pro Kit, we sat down with our team mechanics and carefully selected a set of tools that demanding bicycle mechanic will appreciate. We picked 48 pieces of our tools that are a perfect fit for a portable set, shop, home or team mechanics.

SKU	ID
627358	1600PROKIT-US



PRO KIT TOOL CASE

- The toolbox is designed especially for bike tools; it's made of heavy duty plastic and is waterproof and dustproof.
- It features a hangout pallet that hooks to the holes on the front side of the case, allowing you to have all your tools at hand. The pallet has 9 pockets that are designed to carry everything from pliers to open end wrenches.
- Flaps in the lid can be closed tightly with the Velcro straps; when closed, they also secure the tools in place. Open flaps and inner part of the lid give you 35 individual pockets to carry your tools. The biggest pockets can take our T handle hexes up to size 10 and a special small pockets can securely hold L shaped hex down to size 1.5 or similar small tools, so nothing ever gets lost.

Advantages:

- The pockets are sewed together with durable nylon thread
- Waterproof and dustproof in accordance with IP67 certificate
- Watertight seal around lid
- Automatic pressure release valve
- Easy to open double throw latches
- Load tested soft grip handle
- Holes for shoulder strap (strap not included in the kit)
- Robust case from heavy-duty composite
- Corrosion free nylon pins
- Hang out pallet with 9 pockets, designed to carry everything from pliers to open end wrenches
- Aluminum divider at the bottom of the tool case to keep your tools organized
- Flaps neatly close into the lid of the tool case
- The lid can carry T handle hexes up to size 10
- Special safety tight pockets to hold small tools
- 44 pockets all together + storage under the pallet

SKU	ID
627041	970PROKIT



MASTER TOOL KIT

Master Kit is a big brother to our popular Pro Kit, designed and tested by the professional mechanics for the professional mechanics. Thoroughly thought out layout with extremely durable tool pockets and SOS foam trays for practical and secure organization of your tools. Pockets are sized on the dimensions of our tools, while the foam cutouts are a perfect match for them. Personalization of the case is possible with additional pockets and modular storage space in the bottom part of the case. Tool case also features wheels and retractable handle for easy transportation and is also perfect for air travel. We picked 94 pieces of our tools for this portable set that will suit your needs – no matter if you're a shop, mobile, team or demanding home mechanic.

- The toolbox is designed especially for bike tools; it's made of heavy duty plastic and is waterproof and dustproof.
- Flaps in the lid can be closed tightly with the Velcro straps; when closed, they also secure the tools in place. Open flaps and inner part of the lid are equipped with 44 individual pockets to carry your tools. The biggest pockets can take our T-handle hexes up to size 10, and a special small pockets can securely hold L-shaped hex down to size 1.5 or similar small tools, so nothing ever gets lost.
- Two side tool trays with cut out SOS foam, dimensions 280 mm × 250 mm, will keep your tools in place. When not in use the trays are stored in the case, when working the trays can be fixed on the side of the case, enabling you to have all of the tools always at hand and more space on the table for other items. Side trays are built with metal chassis for stability and strength.
- Additional SOS foam tray for tools storage (dimensions 385 mm × 280 mm) at the bottom of the case.
- Small parts organizer with three compartments and modular parts to build up to 21 compartments
- Additional space for spare parts and/or lubes.

Advantages:

- Fully equipped tool case with 94 pieces of carefully selected high-quality Unior tools
- Wheels and retractable handle with safety latch for easy transportation
- The pockets are sewed together with durable nylon thread
- Left and right SOS foam tray (280 mm × 250 mm) with tools cutouts and metal bottom that hooks on the edge of the case.
- SOS foam tray (385 mm × 280 mm) at the bottom of the case with cutouts for bigger tools
- Foam cutouts feature laser engraved names/codes of the tools
- Waterproof and dustproof in accordance with IP67 certificate
- Watertight seal around lid
- Automatic pressure release valve
- Easy to open/close double throw latches
- Load tested soft grip handle
- Robust case from heavy-duty composite
- Corrosion free nylon pins
- Option to lock the case with a padlock (not included)
- Aluminum divider at the bottom of the tool case to keep your tools organized
- Flaps neatly close into the lid of the tool case
- The lid can carry T handle hexes up to size 10
- Special safety tight pockets to hold small tools
- 44 pockets in total, three SOS foam trays that can fit 50 or more tools, small parts organizer

SKU	ID
629067	1600MASTERKIT-US



MASTER KIT TOOL CASE

Master Kit Tool Case is a perfect starting point for the ultimate toolbox of your dreams. Equip it with the tools of your own selection and enjoy all the customization options this case provides.

- The toolbox is designed especially for bike tools; it's made of heavy duty plastic and is waterproof and dustproof.
- Flaps in the lid can be closed tightly with the Velcro straps; when closed, they also secure the tools in place. Open flaps and inner part of the lid are equipped with 44 individual pockets to carry your tools. The biggest pockets can take our T-handle hexes up to size 10, and a special small pockets can securely hold L-shaped hex down to size 1.5 or similar small tools, so nothing ever gets lost.
- Two side tool trays with cut out SOS foam, dimensions 280 mm × 250 mm, will keep your tools in place. When not in use the trays are stored in the case, when working the trays can be fixed on the side of the case, enabling you to have all of the tools always at hand and more space on the table for other items. Side trays are built with metal chassis for stability and strength.
- Additional SOS foam tray for tools storage (dimensions 385 mm × 280 mm) at the bottom of the case.
- Additional space for spare parts and/or lubes.

Advantages:

- Wheels and retractable handle with safety latch for easy transportation
- The pockets are sewed together with durable nylon thread
- Blank trays for customization available separately, cut them yourself and create the ultimate tool case for your needs. We suggest using hot wire foam cutter or utility knife for cutting.
- Waterproof and dustproof in accordance with IP67 certificate
- Watertight seal around lid
- Automatic pressure release valve
- Easy to open/close double throw latches
- Load tested soft grip handle
- Robust case from heavy-duty composite
- Corrosion free nylon pins
- Option to lock the case with a padlock (not included)
- Aluminum divider at the bottom of the tool case to keep your tools organized
- Flaps neatly close into the lid of the tool case
- The lid can carry T handle hexes up to size 10
- Special safety tight pockets to hold small tools
- 44 pockets in total, three SOS foam trays that can fit 50 or more tools, small parts organizer

SKU	ID
629068	970MASTERKIT



SMALL PARTS ORGANIZER FOR 970MASTERKIT

- Small parts organizer with three compartments and modular parts to build up to 21 compartments.
- 364 x 248 x 50 mm

SKU	ID
626131	970MASTERKIT-ORG



SOCKET SET 1/4" IN PLASTIC BOX

- Dimension of box: 244 x 207 x 59

Set includes:

- 11x socket 1/4", 6 point (article 188/2 6P) dim. 4, 4.5, 5, 5.5, 6, 7, 8, 9, 10, 11, 13
- accessories 1/4"; 1x swivel handle, 1x sliding T - handle, 2x extension bar (55, 150mm)

SKU	ID
626780	188BI6P15-US

1/4"



NEW

SUSPENSION SERVICE SET

- Suspension service set includes the most common tools for servicing suspension forks and shocks, all nicely arranged in a SOS tool tray and stored in a compact box.

The set contains:

- Bushing extractor set sizes 12 mm and 12.7 mm
- Fork seal driver tool for fork sliders sizes 30, 32, 34, 35, 36, 37, 38 and 40 mm
- Hex wrenches sizes 3/64", 1/16", 1.5, 2, 2.5 and 3
- 1/2" sockets sizes 10, 15, 26, 27, 28, 30 and 32
- 1/2" reversible ratchet
- 1/4" socket size 5
- 1/4" swivel handle
- Suspension wrench with strap
- Waterpump box joint pliers
- Awl with round, double bent blade

SKU	ID
628959	1704-US



MASTER WHEEL BUILDING KIT

- Manufactured with high quality carbon steel to ensure minimal wear to tools and wheel components being worked on.
- Includes tools compatible with the most common nipple and spoke types.
- The Nipple Insertion Tool makes seating nipples through double wall rims quick and easy.
- Compact two layer foam storage box.

Kit includes the following tools:

- Speed nipple bit 2.5 mm
- Speed nipple bit 1.5 mm
- DT Swiss® SQUORX nipple tool
- Inverted square nipple driver
- Spoke nipple driver
- Spoke nipple insertion tool
- Mavic R-sys nipple wrench
- Spoke wrench, Mavic
- Spoke, bearing and cotter gauge
- Spoke wrench sizes TX20, 3.23, 3.30, 3.45, 4.0, 4.3, 4.4, 5.0, 5.5 mm
- Socket wrench 5.5
- Flat spoke holder
- Straight Pull Spoke Pliers

SKU	ID
629377	1754

NEW



PRO TOOL ROLL SET

Unior's Professional Tool Wrap is big enough to fit all of the tools and bits that a more mechanically skillful cyclist will want to have at hand. Professional mechanics will love the size and organization of it, so don't be surprised when you see these in the team cars on the next Grand Tour or in the feed zone of the mountain bike or CX world cups. This version includes following tools:

- Long ball end hexagon wrench, sizes 1.5, 2, 2.5, 3, 4, 5, 6, 8 mm
- TX profile wrench, size T25
- Crank cap tool
- Chain tool
- Round spoke wrench
- Set of two tire levers
- Crosstip screwdriver PH0
- Pro Socket Handle
- Chain wear indicator
- Cassette wrench and Cassette locking tool
- 2-For-1 disc brake tool
- Roll features:
 - Aluminum eyelets for setting the wrap on the car seat, with fixation under the head rest
 - Strong Velcro® straps for secure closing
 - Side pockets with full flaps closing for parts or additional tools
 - Additional elastic straps for even more tools
- Made from coated PU material, waterproof and oil resistant
- You can fit mini pump in there as well

SKU	ID
628716	1600ROLL-P-US



TOOL ROLL SET

Unior's Tool Wrap is a great solution for a cyclist who wants to be ready for everything or a modern bikepacker, it will come handy even to a more demanding users such as XC or CX mechanics. The bag is compact, light, and easy to store in your backpack or your car. In this version it comes with great selection of tools.

- Long ball end hexagon wrench, sizes 1.5, 2, 2.5, 3, 4, 5, 6, 8 mm
- TX profile wrench, size T25
- Crank cap tool
- Chain tool, together with tire valve tool
- Round spoke wrench
- Set of two tire levers
- Crosstip screwdriver PH0
- Roll features:
 - Aluminum eyelets for setting the wrap on the car seat, with fixation under the head rest
 - Strong Velcro® straps for secure closing
 - Side pockets with full flaps closing for parts or additional tools
 - Additional elastic straps for even more tools
- Made from coated PU material, waterproof and oil resistant
- You can fit mini pump in there as well

SKU	ID
628714	1600ROLL-US



PRO TOOL ROLL

Features:

- Aluminum eyelets for setting the wrap on the car seat, with fixation under the head rest
- Strong Velcro® straps for secure closing
- Side pockets with full flaps closing for parts or additional tools
- Additional elastic straps for even more tools
- Made from coated PU material, waterproof and oil resistant
- You can fit mini pump in there as well
- Tools are not included

SKU	ID
628718	970ROLL-P



TOOL ROLL

Unior's Tool roll is a great solution for a cyclist who wants to be ready for everything or a modern bikepacker, it will come handy even to a more demanding user such as XC or CX mechanics. The bag is compact, light, and easy to store in your backpack or your car.

Features:

- Aluminum eyelets for setting the wrap on the car seat, with fixation under the head rest
- Strong Velcro® straps for secure closing
- Side pockets with full flaps closing for parts or additional tools
- Additional elastic straps for even more tools
- Made from coated PU material, waterproof and oil resistant
- You can fit mini pump in there as well
- Tools are not included

SKU	ID
628717	970ROLL







COMPLETE SERVICE SOLUTIONS



PROFESSIONAL MECHANIC WORKBENCH

Professional Mechanic Workbench is your choice for the most common bicycle repairs in your workshop. Bench comes with a tool chest with eight drawers and a 2000mm long hard wooden top. Most of the tools are stored in four drawers in a high quality cut-out foam tray. Workbench set comes with a fully equipped truing stand.

SKU	ID	DIM.
628678	2600A-US	2000x750x910



BIKE BUILD WORKBENCH

Bike Build Workbench is the perfect set of tools for bike assembly which come partially assembled in boxes directly from the factories. Workbench comes with a tool chest with eight drawers and a 2000mm long hard wooden top. Most of the tools are stored in three drawers in a compact high quality foam tray. Set also includes a truing stand.

SKU	ID	DIM.
628612	2600B-US	2000x750x910



MASTER WORKBENCH

Master Workbench is a fully equipped workstation for basic and detailed bike repairs. Workbench includes two tool chest units with sum of fifteen drawers and a 2050mm long hard wooden top. Seven drawers are full of tools, stored in a compact high quality foam tray. Set includes a fully equipped truing stand and an IRONGATOR, a vice with quick moving system.

SKU	ID	DIM.
628623	2600C-US	2000x750x910



SUSPENSION WORKBENCH

Suspension Workbench is a specific set of tools for servicing bicycle suspension. Workbench comes with a tool chest with eight drawers and a 2000mm long hard wooden top. Three drawers are full with specific and general tools stored in a compact high quality cut out foam. Other drawers are useful for storing spare parts and lubricants. Workbench also comes with IRONGATOR, a vice with a quick moving system and a bench mount bike stand.

SKU	ID	DIM.
628661	2600D-US	2000x750x910



SET OF TOOLS IN TRAY FOR 2600A-US OR 2600C-US

SKU	ID	DIM.	#
628625	SET1-2600AC-US	560x570x40	1
628627	SET2-2600AC-US		2
628629	SET3-2600AC-US		3
628631	SET4-2600AC-US		4



GENERAL TOOLS



Empty tray for SET1-2600AC

SKU	ID
628633	VL1-2600AC



DRIVETRAIN TOOLS



Empty tray for SET2-2600AC

SKU	ID
628634	VL2-2600AC



WHEEL TOOLS



Empty tray for SET3-2600AC

SKU	ID
628635	VL3-2600AC



TORQUE TOOLS AND PLIERS



Empty tray for SET4-2600AC

SKU	ID
628636	VL4-2600AC

SET OF TOOLS IN TRAY FOR 2600B-US

SKU	ID	DIM.	#
628613	SET1-2600B-US	560x570x40	1
628615	SET2-2600B-US		2
628618	SET3-2600B-US		3



Empty tray for SET1-2600B

SKU	ID
625469	VL1-2600B



Empty tray for SET2-2600B

SKU	ID
625470	VL2-2600B



Empty tray for SET3-2600B

SKU	ID
628620	VL3-2600B

BLANK TRAY FOR WORK BENCH DRAWERS

SKU	ID	DIM.
627109	VL990WD-NEU	562x570x40
627110	VL990ND-NEU	374x570x40

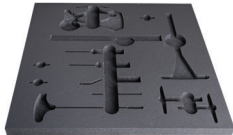


SET OF TOOLS IN TRAY FOR 2600C-US

SKU	ID	DIM.	#
628647	SET1-2600C-US		1
628648	SET2-2600C	560x570x40	2
628651	SET3-2600C-US		3



WHEEL BUILDING



Empty tray for SET1-2600C

SKU	ID
628652	VL1-2600C



FRAME AND FORK TOOLS



Empty tray for SET2-2600C

SKU	ID
628653	VL2-2600C



FRAME PREPARATION TOOLS



Empty tray for SET3-2600C

SKU	ID
628654	VL3-2600C

SET OF TOOLS IN TRAY FOR 2600D-US

SKU	ID	DIM.	#
628662	SET1-2600D-US		1
628663	SET2-2600D-US	562x570x40	2
628664	SET3-2600D-US		3



Empty tray for SET1-2600D

SKU	ID
625476	VL1-2600D



Empty tray for SET2-2600D

SKU	ID
625477	VL2-2600D



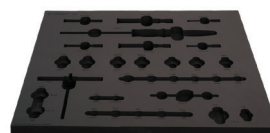
Empty tray for SET3-2600D

SKU	ID
625478	VL3-2600D

BEARING SERVICE TOOL TRAY FOR 2600E

- Installation kit includes spindle with two threaded handles, adaptors for following standard bearings: 608, 1526, 6000, 6001, 6802, 6803, 6804, 6805, 6900, 6901, 6902, 6903, R6, 28x17 (Hope), BB30, all Press-fit standards and two different sized plastic coated adaptors, to protect carbon surfaces during bearing installation.
- One of the threaded handles includes a quick release system for quick and easy use.
- Removal kit includes heavy duty slide hammer with adaptors that support bearing removal with inner bearing dimensions 6.5-8,10-12, 12-15, 17-20, 22-28, 30-36mm.
- All parts come arranged in a cut-out foam and fit all the Unior wide workbench drawers.

SKU	ID	DIM.
628676	SET-2600E-US	562x570x30



Empty tray for SET-2600E

SKU	ID
628120	VL-2600E

PROFESSIONAL MECHANIC TOOL CARRIAGE

- Containing a curated selection of the most used tools for your workshop, shows and events.
- Featuring 7 drawers of tools all held in laser cut foam trays and an additional 8th deep drawer for storage of workshop essentials.

Carriage features:

- Material: 1.2mm thick Premium PLUS sheet metal
- Possibility to add accessories
- Blind nuts for fixing accessories are mounted to the carriage
- Static load capacity of carriage without casters: 1600kg
- Dynamic load capacity of carriages: 300 kg
- Maximum capacity of each drawer: 45kg
- 8 drawers (7x L 563 x W 365 x H 70mm, 1x L 563 x W 383 x H 150mm)
- Basic dimensions with handle and casters L 800 x W 440 x H 923mm
- Total volume of drawers: 135 litres
- Drawers are compatible with SOS tool trays 1/3, 2/3, 3/3
- Left and right side are perforated
- Includes 10 hooks dimension 50mm
- ABS plate on the top of the carriage

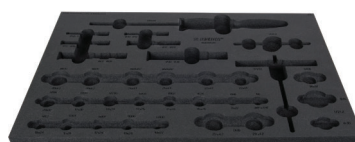
SKU	ID
629226	1600N1-US



BEARING SERVICE TOOL TRAY

- Installation kit includes spindle with two threaded handles, adaptors for following standard bearings: 608, 1526, 6000, 6001, 6802, 6803, 6804, 6805, 6900, 6901, 6902, 6903, R6, 28x17 (Hope), BB30, all Press-fit standards and two different sized plastic coated adaptors, to protect carbon surfaces during bearing installation.
- One of the threaded handles includes a quick release system for quick and easy use.
- Removal kit includes heavy duty slide hammer with adaptors that support bearing removal with inner bearing dimensions 6.5-8,10-12,12-15,17-20,22-28,30-36mm.
- All parts come arranged in a cut-out foam trays, that fits our Europlus, Eurovision, Eurostyle and Hercules trolleys

SKU	ID
629063	1600SOS20-US



**Tool tray for
1600SOS20**

SKU	ID
626105	VL.1600SOS20

BIKE TOOL SET IN TOOL TRAY

We took the tools from our Professional Mechanic Work Bench and adopted the SOS inserts to fit drawers of our trolleys. The selection of tools is now available in seven individual trays made of high-quality foam (from model 1600SOS13 to model 1600SOS19), where each tool has its own place. Foam trays fit all models of Europlus, Eurovision, Eurostyle and Hercules carriages.

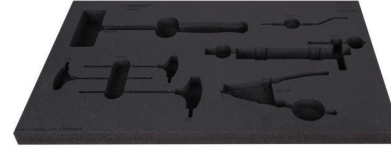
Each foam tray is available separately to match your needs.

SKU	ID	#
629197	1600SOS13-US	1
629195	1600SOS14-US	2
629193	1600SOS15-US	3
629191	1600SOS16-US	4
629189	1600SOS17-US	5
629187	1600SOS18-US	6
629185	1600SOS19-US	7



1

SOS tool tray for 1600SOS13



SKU	ID
629198	VL1600SOS13

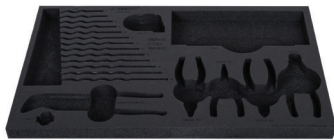


2



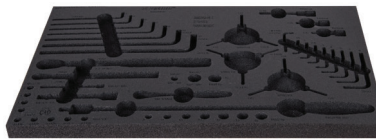
3

SOS tool tray for 1600SOS15



SOS tool tray for 1600SOS14

SKU	ID
629200	VL1600SOS14



SKU	ID
629202	VL1600SOS15



4



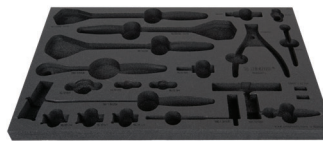
5

SOS tool tray for 1600SOS17



SOS tool tray for 1600SOS16

SKU	ID
629204	VL1600SOS16



SKU	ID
629206	VL1600SOS17



6



7

SOS tool tray for 1600SOS18



SOS tool tray for 1600SOS19

SKU	ID
629208	VL1600SOS18



SKU	ID
629210	VL1600SOS19



— WORKSHOP A LA CART —

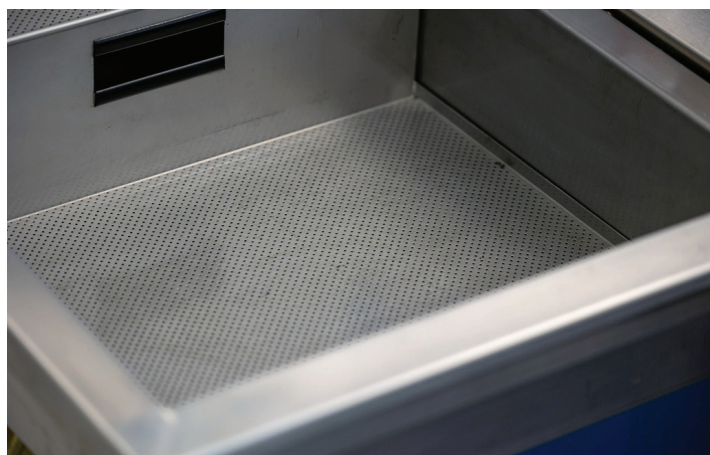
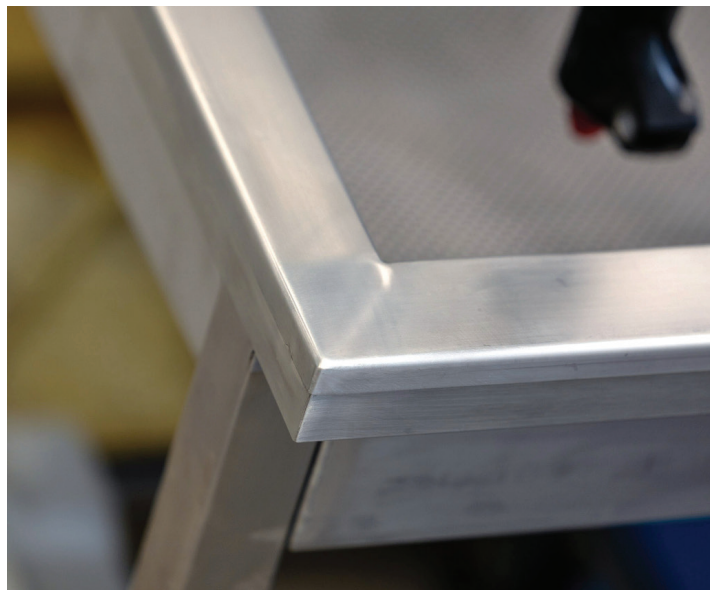


SUSPENSION SERVICE SINK

NEW

- A perfect addition to our modular workbenches - the Suspension Service Sink.
- Designed to make working on suspension forks and shocks as efficient as possible, it's constructed entirely of stainless steel and is equipped with a host of features developed with input from service professionals.
- Auto adjust clamp will hold the suspension component securely and allows you to set the desired orientation. We've perforated the rear panel to accept hooks in any configuration to hang parts for easy access and drying. The sink shape and function has been optimized for easy drainage using smooth drip holes and a valved drain to collect waste oil safely. Finally there are adjustable feet which allow you to level the sink and ensure correct function at all times.

SKU	ID
629350	990SIN



POWER SUPPORT FOR MODULAR WORK BENCH

- material: premium PLUS sheet metal
- Power support for modular work bench includes 2 reels (electric and hose) with spring return.
- Electric cable reel includes 13m cable 3x1,5mm² for 220V.
- Hose reel includes hose in length of 10+3m, inner diameter 8mm, outer diameter 12mm, 1/4" connector. Max. working pressure 7 bars.
- The bottom part with doors and a shelf in the interior.
- The reels are available also as a individual article; the hose reel under the code 627388 and the electric cable reel under code 627387. Reels can be assembled on the support leg of the modular work bench with help of the pneumatic holder, code 627372.
- lock with key included also foam keyring

SKU	ID	DIM.
628809	990PNE-BLACK	475x650x870 mm



CLEANING SUPPORT FOR MODULAR WORK BENCH

- material: premium PLUS sheet metal
- With 2 pull out drawers.
- In the upper drawer can be placed a paper roll of max. dia. 270mm and max. length 380mm. There is also a place on the back side of the drawer for the spare paper roll.
- The lowest drawer has 2 divided containers for waste, total volume 50 litres; the first container has possibility to put the waste through the flap door on the front side of the drawer.
- coated with eco colour of Qualicoat quality standard

SKU	ID	DIM.
628810	990BIN-BLACK	475x650x870 mm



NARROW DRAWER CABINET - 6 DRAWERS

- material: premium PLUS sheet metal
- central locking system with a lock and folding key
- lock with key included also foam keyring
- full extension drawers with top quality ball-bearing slides
- the synthetic covering protects drawers and tools from damage
- coated with eco colour of Qualicoat quality standard
- 6 drawers (4 x L 374 x W 570 x H 70 mm, 1 x L 374 x W 605 x H 150 mm, 1 x L 374 x W 605 x H 230 mm)
- basic dimensions L 475 x W 650 x H 870 mm
- total volume of drawers: 145 litres
- possible use of SOS tool tray system in drawers
- maximum capacity of each drawer: 50kg

SKU	ID	DIM.
626166	990ND6-BLACK	475x650x870 mm



NARROW DRAWER CABINET - 2 DRAWERS AND DOOR

- material: premium PLUS sheet metal
- central locking system with a lock and folding key
- lock with key included also foam keyring
- full extension drawers with top quality ball-bearing slides
- the synthetic covering protects drawers and tools from damage
- coated with eco colour of Qualicoat quality standard
- 2 drawers (2 x L 374 x W 570 x H 70 mm)
- with door
- basic dimensions L 475 x W 650 x H 870 mm
- total volume of drawers: 30 litres
- possible use of SOS tool tray system in drawers
- maximum capacity of each drawer: 50kg

SKU	ID	DIM.
626167	990NDD2-BLACK	475x650x870 mm



TOOL CHEST WIDE - 7 DRAWERS

- material: premium PLUS sheet metal
- central locking system with a lock and folding key
- lock with key included also foam keyring
- full extension drawers with top quality ball-bearing slides
- the synthetic covering protects drawers and tools from damage
- coated with eco colour of Qualicoat quality standard
- 7 drawers (5 x L 564 x W 570 x H 70mm, 2x L 564 x W 605 x H 150mm)
- basic dimensions L 663 x W 650 x H 870 mm
- total volume of drawers: 214 litres
- possible use of SOS tool tray system in drawers
- maximum capacity of each drawer: 50kg

SKU	ID	DIM.
628585	990WD7-BLACK	663x650x870 mm



HANGING CABINET FOR WORK BENCHES

- material: premium PLUS sheet metal
- door locked with lock and folding key
- lock with key included also foam keyring
- coated with eco colour of Qualicoat quality standard
- maximal load capacity of hanging cabinet length 1000mm is 40kg, for 1250mm and 1500mm is 50kg. Load capacity of the shelf is 15kg
- hanging door with telescopic mechanism
- on the bottom part of the cabinet is set a light holder
- two possibilities of hanging - on the support leg of the modular work bench or on the wall. For hanging on the wall additional support is enclosed.

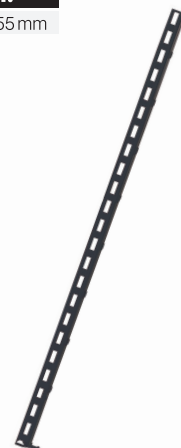
SKU	ID	DIM.
628808	990CAU-BLACK	1000x350x510 mm



LEFT SUPPORT

- material: premium PLUS sheet metal
- coated with eco colour of Qualicoat quality standard

SKU	ID	DIM.
627694	990SL-BLACK	32x45x1155 mm



MIDDLE SUPPORT

- material: premium PLUS sheet metal
- coated with eco colour of Qualicoat quality standard

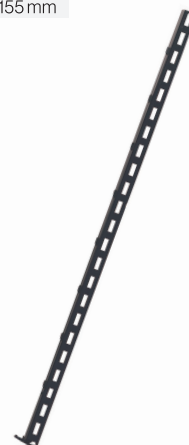
SKU	ID	DIM.
627691	990SM-BLACK	32x45x1155 mm



RIGHT SUPPORT

- material: premium PLUS sheet metal
- coated with eco colour of Qualicoat quality standard

SKU	ID	DIM.
627690	990SR-BLACK	32x45x1155 mm



WOODEN WORKING PLATE WITH STAINLESS STEEL COVER

Protect your valuable investment, and get our wooden bench top together with the inox stainless steel cover – an unbeatable combination of sleek style and superior strength. Engineered to resist corrosion, rust, and temperatures up to 100°C while its non-porous surface keeps dirt and oil stains from penetrating into the underlying material; this reliable shield is designed for long-term use and is ensuring you can enjoy same beautiful look day after day! Make sure your investment lasts forever by getting this Unior article 990TW-SST for your workshop still today.

- made from sturdy chip board covered by inox plate
- thickness: wood 38mm, inox plate 1mm

SKU	ID	DIM.
629423		1500x753x39
629424	990TW-SST	2000x753x39
629425		2500x753x39



WOODEN BENCH TOP

- beech plywood
- protected with environmentally friendly coating

SKU	ID	DIM.
625630		1500 x 750 x 40
625631	990TW	2000 x 750 x 40
625632		2500 x 750 x 40



ANGLE WOODEN BENCH TOP

- beech plywood
- protected with environmentally friendly coating

SKU	ID
628149	990TW1



ADJUSTABLE LEG FOR MODULAR WORK BENCH

- material: premium sheet metal
- coated with eco colour of Qualicoat quality standard

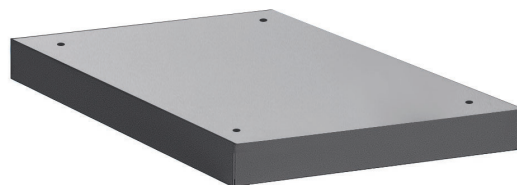
SKU	ID	DIM.
626630	990LA-BLACK	475 x 650 x 870



NARROW TOOL CHEST UNDERBASE

- material: premium sheet metal

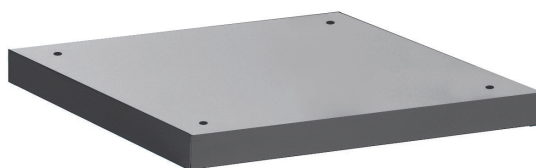
SKU	ID	DIM.
627689	990NDU-BLACK	442x640x78mm



WIDE TOOL CHEST UNDERBASE

- material: premium sheet metal

SKU	ID	DIM.
627688	990WDU-BLACK	630x650x78mm



HEAVY DUTY DRAWER CABINET

- heavy duty and durable cabinet construction
- cabinet dimensions: L1221 × W700 × H1304 mm
- 6 drawers: 2 in size L1106 × W596 × H72 mm with capacity 90 kg and 4 in size L1106 × W596 × H198 mm with capacity 180 kg
- total drawer volume: 522 liters
- 100% extension drawers with high quality ball bearing slides
- central locking system with a lock and folding key
- block safety system prevents simultaneous opening of more than one drawer. When one drawer is opened, all other drawers are locked and cannot be opened, which prevents drawer from tipping over.
- customization – divide drawers with the use of partitions and dividers according to your needs
- made of premium PLUS sheet metal
- painted with eco colors of Qualicoat quality standard

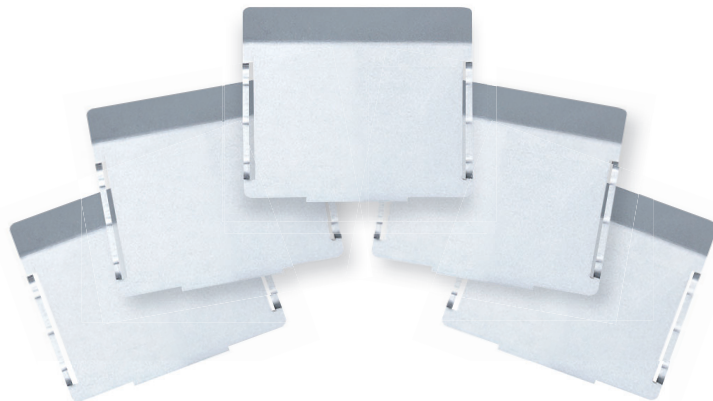
SKU	ID
628256	991HD-BLACK



SET OF DIVIDERS FOR 991HD, 5 PIECES

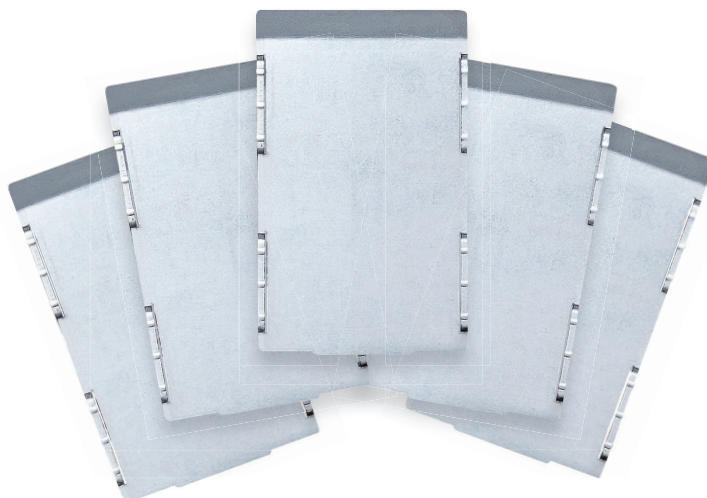
SMALL DRAWERS

SKU	ID	DIM.
628267	991.11HDS	74,7x7x68mm
628268	991.12HDS	100,5x7x68mm
628269	991.13HDS	152x7x68mm



BIG DRAWERS

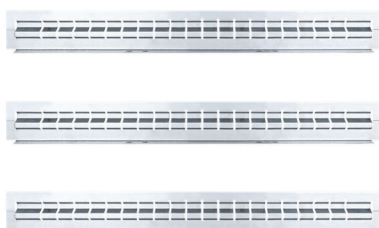
SKU	ID	DIM.
628271	991.21HDS	74,7x7x139mm
628272	991.22HDS	100,5x7x139mm
628273	991.23HDS	152x7x139mm



SET OF PARTITIONS FOR 991HD, 3 PIECES

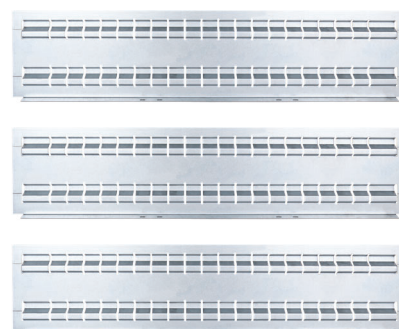
SMALL DRAWERS

SKU	ID
628266	991.1HDS



BIG DRAWERS

SKU	ID
628270	991.2HDS



PERFORATED BACK FOR ANGLE MODULAR WORK BENCH, 4 PCS SET

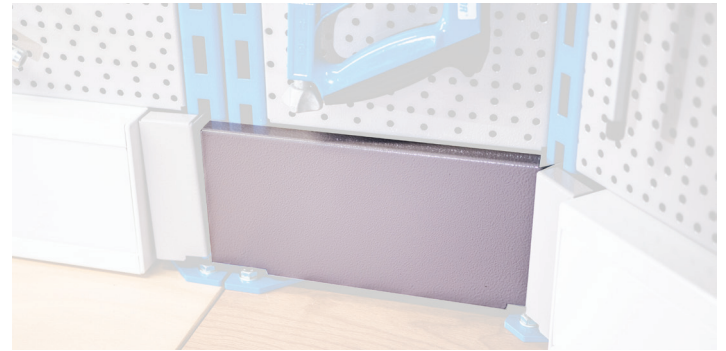
- material: premium PLUS sheet metal
- coated with eco colour of Qualicoat quality standard

SKU	ID
628201	990BA



COVER SET FOR ANGLE MODULAR WORK BENCH, 2 PCS SET

SKU	ID
628203	990BA1



HOOK, 10 PCS SET

- for display boards, display panel and tool cabinets
- it is possible to fix the hangers in a required position
- chrome plated

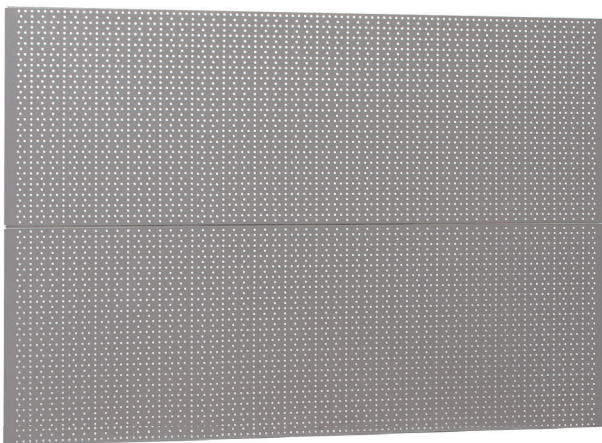
SKU	ID	DIM.
609478	9971	35
609479		50
609480		80
609447		100
610559		150
610560		200



PERFORATED BACK, 2 PCS SET

- coated with eco colour of Qualicoat quality standard
- material: premium PLUS sheet metal

SKU	ID	DIM.
625652	990B	952 x 1018
625653		1202 x 1018
625654		1436 x 1018



HOLDER WITH PARAPET CHANNEL

Compatible with OBO STD-D0 Modul 45 plugs

SKU	ID	DIM.
625656	990HPC	983 x 73,3 x 131,3
625657		1233 x 73,3 x 131,3
625658		1467 x 73,3 x 131,3



HOLDER FOR LIGHT WITH CONSOLE

SKU	ID	DIM.
625663		121x36,5x1010 mm
625664	990HL	121x36,5x1010 mm
625665		121x36,5x1485 mm



LIGHT

- with power supply cable and two light connector
- lifetime of leds is 25000 hours
- Color temperature is 4000K
- Hg free
- UV free

SKU	ID	DIM.	W	LM
625666		600x23x37 mm	10	1000
625667	990LIGHT	860x23x37 mm	15	1400
625671		1150x23x37 mm	20	1900



SHELF WITH HOLDERS

- material: premium PLUS sheet metal
- coated with eco colour of Qualicoat quality standard

SKU	ID	DIM.
625672		1000x984x250 mm
625673	990SHELF	1250x1234x250 mm
625674		1500x1468x250 mm



HOLDER FOR PLASTIC BOX

SKU	ID	DIM.
625660		1000x40,5x98
625661	990HPB	1250x40,5x98
625662		1500x40,5x98



TOOL CARRIAGE HERCULES

- material: premium PLUS sheet metal
- central locking system with a lock and folding key
- lock with key included also foam keyring
- oil and acid resistant casters of a diameter of 125mm, two with brake, which blocks spinning and swiveling of the caster
- full extension drawers with top quality ball-bearing slides
- opening and closing of drawers is very simple due to the uniform solution - drawer handle on the upper side enables users a synchronic grip and opening of a carriage drawer.
- drawers with non-slip interior synthetic lining
- coated with eco colour of Qualicoat quality standard
- 7 front drawers (5x L 563 x W 365 x H 70mm, 2x L 563 x W 383 x H 150mm)
- basic dimensions with handle and casters L 1182 x W 640 x H 955 mm
- total volume of drawers: 133 litres
- door with lock
- wooden worktop
- static load capacity of carriages without casters: 2300 kg
- dynamic load capacity of carriages: 550 kg
- capacity of front drawers: 45 kg
- drawers compatible with SOS tool trays 1/3, 2/3, 3/3

Advantages:

- Perforated wall on the back side of the tool carriage allows hanging tools with tool hooks
- As an accessories available also a spray holder for easy storage of sprays up to dia. 68mm, and a back door with a lock

SKU	ID	DIM.
628212	940H2-BLACK	1182x640x955



TOOL CARRIAGE EUROSTYLE

- material: premium PLUS sheet metal
- central locking system with a lock and folding key
- lock with key included also foam keyring
- oil and acid resistant casters of a diameter of 100 mm, one with brake, which blocks spinning and swiveling of the caster
- full extension drawers with top quality ball-bearing slides
- the synthetic covering protects drawers and tools from damage
- wide range of accessories
- coated with eco colour of Qualicoat quality standard
- 7 drawers (5 x L 560 x W 365 x H 70 mm, 2 x L 560 x W 400 x H 150 mm)
- basic dimensions with handle and casters L 760 x W 440 x H 895 mm
- total volume of drawers: 140 litres
- static load capacity of carriage without casters: 1600kg
- dynamic load capacity of carriages: 300 kg
- maximum capacity of each drawer: 45kg
- left and right side are perforated
- include 10 hooks dimension 50mm
- ABS plate on the top of the carriage
- drawers compatible with SOS tool trays 1/3, 2/3, 3/3

SKU	ID	DIM.
628213	940E4/1L-BLACK	770x448x895 mm



SERVICE TROLLEY

- Ergonomic, lightweight and easily moved service trolley
- This industrial-quality service trolley is ideal for use in garages, engineering workshops and warehouses.
- It allows the user to easily transport tools and components around the working area, and keep them easily at hand while working on a task.
- This trolley encourages and organized, pre-planned approach to tasks, and improves efficiency, productivity and comfort.
- The water-resistant top shelf allows easy access to tools and parts at a comfortable working height, while the lower shelf provides additional storage.
- The shelves are engineered for a maximum load of 100kg each, and are protected with an impact-resistant, anti-slip mat.
- Made in Europe to the highest standards, and backed by Unior's lifetime warranty.

Includes:

- 4 casters - 2 fixed and 2 swivelling. One easily-braked caster.
- Two water-resistant shelves, upper complete with impact-absorbing, anti-slip mat

Specifications:

- Total capacity 200kg. Maximum 100kg per shelf.
- Assembled dimensions: 1072 x 600 x 887mm
- Packaged dimensions: 1020 x 635 x 190mm

SKU	ID
628211	940T-BLACK



MOBILE DESK

- material: premium PLUS sheet metal
- working surface with mobile durable plate with buckle, size landscape A3
- raised edge for preventing plate slippage
- mobile phone stand
- holes for pen storage
- deepened storage surface for accessories
- 2 drawers L 563 x W 365 x H 70mm
- drawers can be modified with partitions set 940ES3A or 940ES3
- 2 storage surfaces in the lower part of the trolley
- ergonomic handle
- central locking system with a lock and folding key
- oil and acid resistant casters of a diameter of 100 mm, one with brake, which blocks spinning and swiveling of the caster
- full extension drawers with top quality ball-bearing slides
- the synthetic covering protects drawers and tools from damage
- coated with eco colour of Qualicoat quality standard
- basic dimensions with handle and casters L 770 x W 460 x H 1252mm
- maximum capacity of each drawer: 45kg
- drawers compatible with SOS tool trays 1/3, 2/3, 3/3

SKU	ID	DIM.
628215	994-BLACK	770x460,5x1252



TOOL CABINET

- material: premium PLUS sheet metal
- locking with keylock and folding key
- lock with key included also foam keyring
- drawers with ball-bearing slides
- coated with eco colour of Qualicoat quality standard

SKU	ID	DIM.
628214	949-BLACK	695 x 660 x 2030



WARDROBE CABINET, 6 COMPARTMENTS

The wardrobes are powder painted to resist rusting. For additional protection the sheet steel is ecologically lacquered with cadmium and lead free colour. The wardrobe doors in bright colours fill each room with youthful atmosphere.

- the body of the wardrobe is made of 0.8 mm thick high quality sheet steel
- the doors are made of 1 mm thick sheet steel, reinforced against lateral torsion and bending. The doors come in six different colours (RAL 1021, RAL 3020, RAL 5010, RAL 6029, RAL 2004 and RAL 7035).

SKU	ID	DIM.
628588	950/6-BLACK	1000x500x1880





 **UNIOR**
BIKE TOOLS

UNIOR GEAR



MINI BOTTLE OPENER

NEW

- A compact and portable addition to your everyday carry.
- Crafted from high-quality tool steel for exceptional durability.
- Designed with a sleek and compact form factor, making it perfect for attaching to your key ring.
- An essential tool for any occasion, whether you're camping, attending parties, or simply enjoying a cold beverage.
- Equipped with a sturdy fastening loop, allowing you to securely attach it to your keyring or other items.
- Upgrade your keychain with the Mini bottle opener, a reliable and stylish tool that ensures you're always prepared to pop open a bottle whenever the occasion calls for it.

SKU	ID
629499	45/2A



BOTTLE OPENER WITH HANDLE

NEW

- An essential tool for your workshop, garage, or toolbox. This must-have tool ensures you can enjoy a refreshing beverage after a hard day's work.
- Precision-crafted from laser-cut tool steel for durability and longevity.
- Double-dipped handle offers superior comfort and hassle-free bottle opening.
- Designed with an Unior bike tools handle to seamlessly integrate with other Unior tools in your workshop.
- An essential tool for every workshop, garage, or toolbox, making it versatile and practical.
- Convenient hanging hole for easy storage and accessibility.
- Reward yourself with a cold drink "When Work's Done".

SKU	ID
629429	45/2DP



UNIOR BICYCLE MECHANICS BOOK #1

- Written by expert mechanic Denise Belzil who has over 30 years experience
- Richly detailed how-to instructions plus images to guide professional and home bike mechanics
- Volume 1 covers hubs, bottom brackets and headsets over 274 pages
- Spiral bound for easy use
- High quality laminated paper for durability in the workshop

SKU	ID	
627300	KAT.BIKEBOOK1	EN
627302		FR



UNIOR BICYCLE MECHANICS BOOK #2

- Written by expert mechanic Denise Belzil who has over 30 years experience
- Richly detailed how-to instructions plus images to guide professional and home bike mechanics
- Volume 2, covers gear and brake systems over 318 pages
- Spiral bound for easy use
- High quality laminated paper for durability in the workshop

SKU	ID	
627722	KAT.BIKEBOOK2	EN
627723		FR



T-SHIRT BIKE TOOLS FOR MEN

- A classic mid-weight Tee made from 100% cotton with short sleeves and a crew neck. Grey with contrasting white printing – Unior logo on the front and Made For Work on the back.
- Simple, clean and timeless.

SKU	ID	DIM.
629303	1850M.BIKE-BLACK	S
629304		M
629305		L
629306		XL
629307		XXL



SKU	ID	DIM.
629308	1850M.BIKE-GREY	S
629309		M
629311		XL



SOCKS

A seamless technical sports socks made from Cotton and Elastane for comfort and breathability. Ideal for whatever you like to ride!

SKU	ID	DIM.
629455	1858WHITE	37-42
629456		43-48
629316		46-49



SKU	ID	DIM.
629457	1858BLACK	37-42
629458		43-48
629320		46-49



LABEL MADE FOR WORK

- Made to be stuck anywhere – our new Made For Work sticker comes in a holographic finish for a bit of fun. It catches the eye and adds a bit of happiness to your day.
- Be sure to tag us on Instagram with @uniorbiketools to show us where you stick yours.

SKU	ID
626693	1843MFW-BIKE TOOLS
626694	1843MFW-HAND TOOLS



INSULATED VACUUM BOTTLE

- 500ml capacity and with a double wall construction, this vacuum flask is insulated to keep hot or cold drinks ready to drink how you like them.
- Black with white Unior and Made For Work logos
- BPA Free
- 320g

SKU	ID
629265	1842AS



ENAMELED CUP

- Like our tools, this cup is made in Slovenia. Black enamel with a contrasting white lettering and interior, it's tough and designed to last. Perfect for any drink while you work.
- Suitable for all hobs including induction
- Non-allergenic – doesn't contain nickel
- Easy to clean
- Non toxic

SKU	ID
629266	1841A-BLACK

SKU	ID
629267	1841A-RED



HOODIE

- Made from a resilient ring spun and combed cotton (80%) + polyester (20%) blend. Our new pullover hoodie is designed for everyday use from 280g/m2 material, featuring a straight-cut shape with a single jersey lined hood plus flat cord drawstrings.
- Light grey with contrasting white Unior logo on the front and Made For Work on the rear
- Front pouch
- Made For Work, Rest and Play

SKU	ID	DIM.
629269	1854BIKE	S
629270		M
629271		L
629272		XL
629273		XXL



COTTON BAG UNIOR

Life isn't just all about bikes... sometimes you need to do normal things and we've made a simple 100% cotton tote bag to help you. Take it shopping, travel with it, it's up to you. Featuring the Unior Bike Tools logo on one side and Made For Work on the other it's an everyday essential you shouldn't be without.

SKU	ID	DIM.
626639	1847COTT	380x90x420



ZIPPER HOODIE

- Like our Pullover version this is made from a resilient ring spun and combed cotton (80%) + polyester (20%) blend. Made using 280g/m2 material featuring a straight-cut shape with a single jersey lined hood, plus flat cord drawstrings.
- Light grey with contrasting white Unior logo on the front and Made For Work on the rear
- Front pouch
- Made For Work, Rest and Play

SKU	ID	DIM.
629274	1854Z-BIKE	S
629275		M
629276		L
629277		XL
629278		XXL



TRUCKER CAP

Grey with embroidered white Unior Bike Tools logo, this is a wardrobe staple. 100% cotton canvas with ventilation holes, wide brim and fit adjuster it's ready for wear whenever you feel like it.

SKU	ID
629268	1839



LOGO PANEL

- Our new wall sign is the ideal finishing touch for your workspace.
- Measurements: 550 x 150 mm

SKU	ID
629279	PANEL1





**Scan me to access
all spare parts.**

SPARE PARTS





Forged by the best. For the best.

An advantage of in-house manufacturing is that we offer coherent solutions to all user types. From Complete Service Solutions to portable Tool Wraps to Multitools, our range is designed to be accessible and supportive to all bike tools users.

This consistency of quality and user experience is an important part of Unior's approach. With a focus on organisation with our laser cut foam trays, to our carefully considered Tool Kits the goal remains clear - our users are confident to use Unior.

From design to production systems we operate a program of continuous improvement - as we manufacture our own tools we have full control over what we do. An advantage we have over other brands is we have **full control from raw materials to finished tool** allowing us to operate this way.

**MADE IN
SLOVENIA.**

MADE IN SLOVENIA.

Our origin story is important for the user of Unior tools. Unior's factories use the latest equipment, some of which we make in our own Machine Tools department. As a responsible manufacturer, our commitment to environmental protection is one we take seriously, and our environmental management system is in accordance with the requirements of the international standard ISO 14001.

ISO 14001 deals with different aspects: environmental protection, emergency procedures and safety at work. Specifically, environment management includes reducing resource consumption, improved productivity of technological processes and the reduction of negative environmental impacts. It is important we forge a future that is sustainable for all and Unior will continue to find solutions to this global problem.

As manufacturers of tools we have full control over the specification of not only the tool but the materials used to make it. 8 different steel types are used by Unior to ensure our tools can perform correctly and reliably throughout their lifespan.

We recognise the investment made by professionals and home users alike - Unior customers should be confident the tools they buy are the best, have been used and tested by the best, and that we back them up with support to match their expectations with a **limited lifetime warranty**.

