



MODULAR WORKPLACE SYSTEMS



*The ultimate solution for improved productivity and efficient workspaces*

# Combinations for Organized Storage Modules

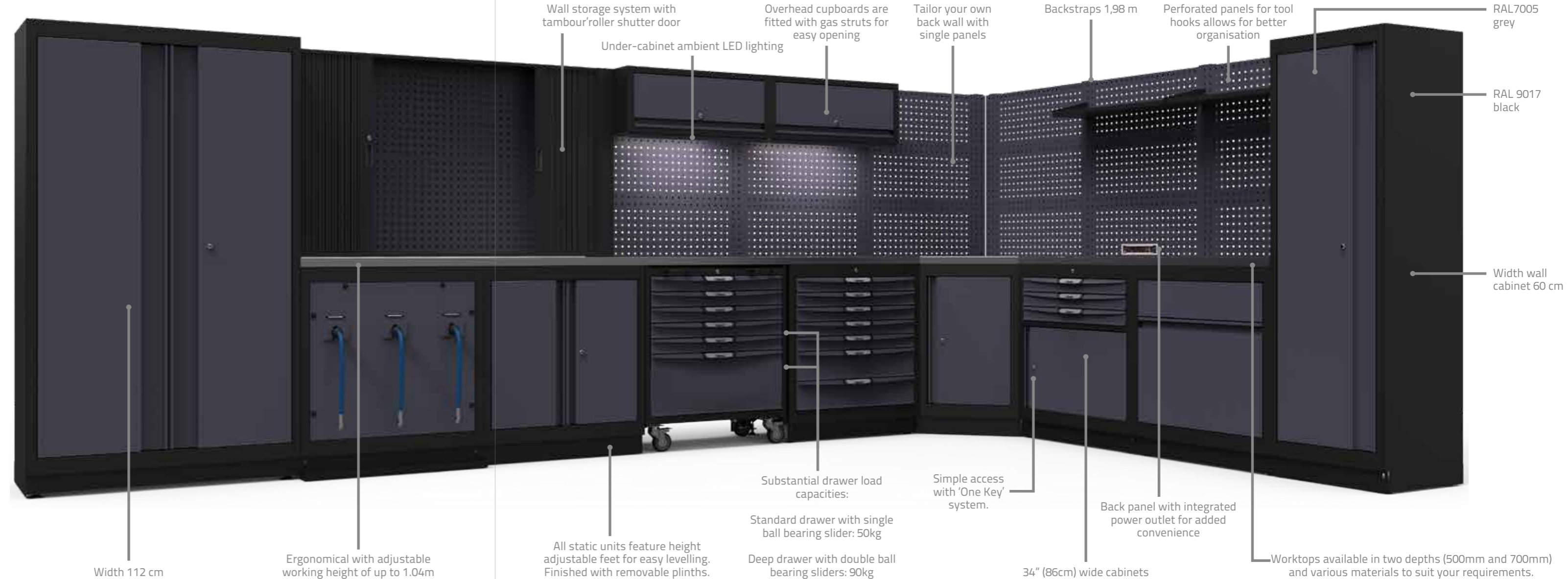
Tailor your workspace to suit your storage needs with the BOXO OSM system. With an extensive range of options to choose from and the flexibility of ordering cabinets individually, the BOXO OSM system provides a unique and flexible storage solution. In this brochure, we show you several example combinations.



Heavy-duty ball bearing slides for smooth operation.



Fully extending drawers for easy access to your tools.

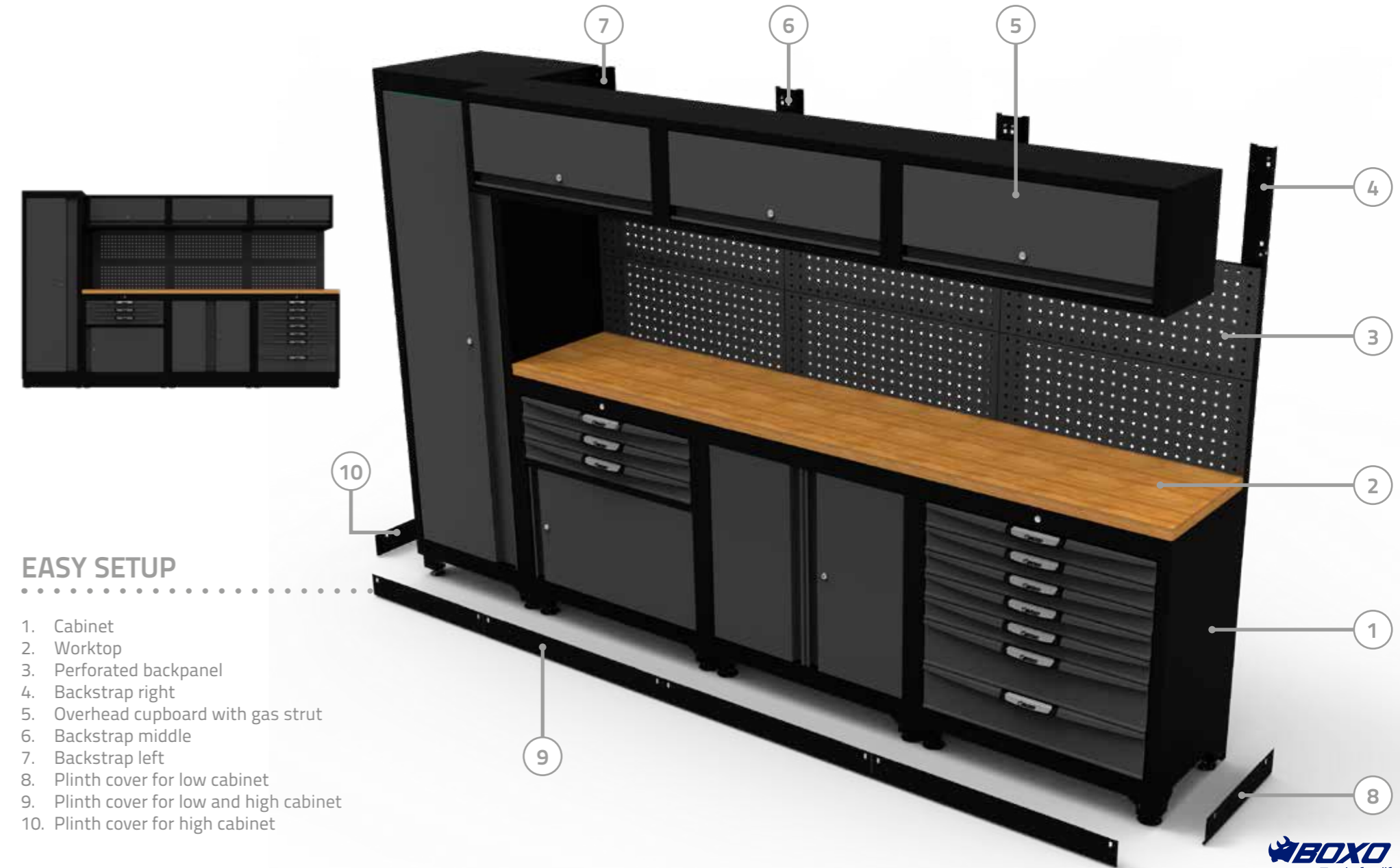


# Why BOXO OSM?

- More than 40 year's experience in the development and production of workshop storage solutions, equipment and trolleys for the professional user
- Excellent price to quality ratio
- Modular system, making it easy to modify or extend as your requirements change
- Extensive range with countless configurations
- Fast delivery with stock readily available in Europe
- Personal advice
- Improve your professional image
- A professional appeal
- Easy to design and install
- Installation possible on request



BOXO OSM Demonstration Vehicle



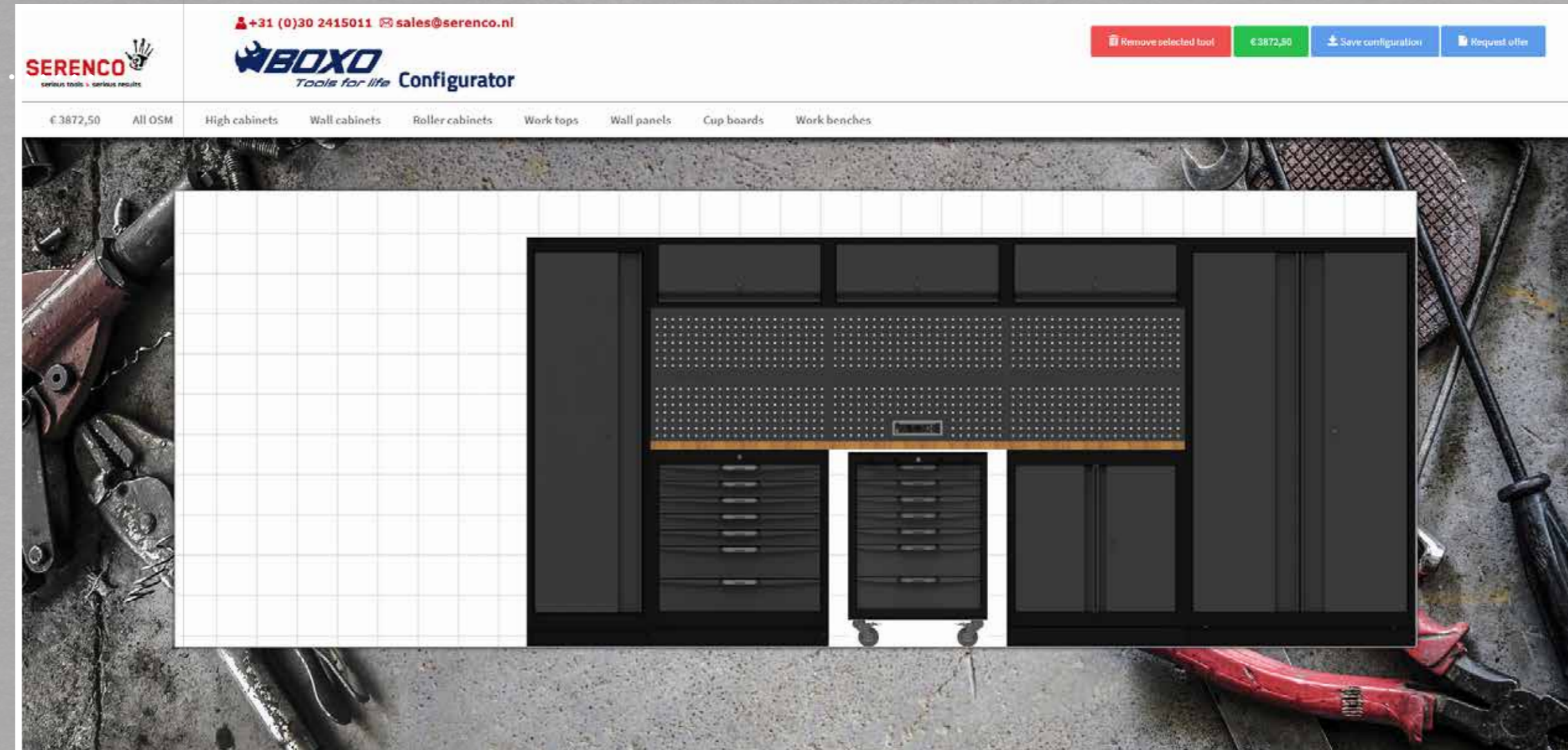
# THE ULTIMATE STORAGE SOLUTION FOR EVERY WORKSPACE

Tailor your own storage layout with the OSM configurator.

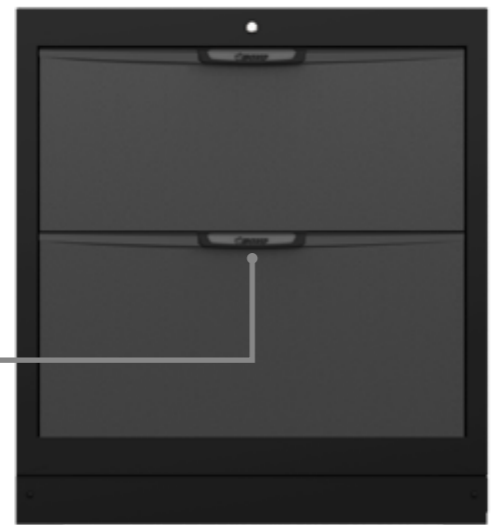
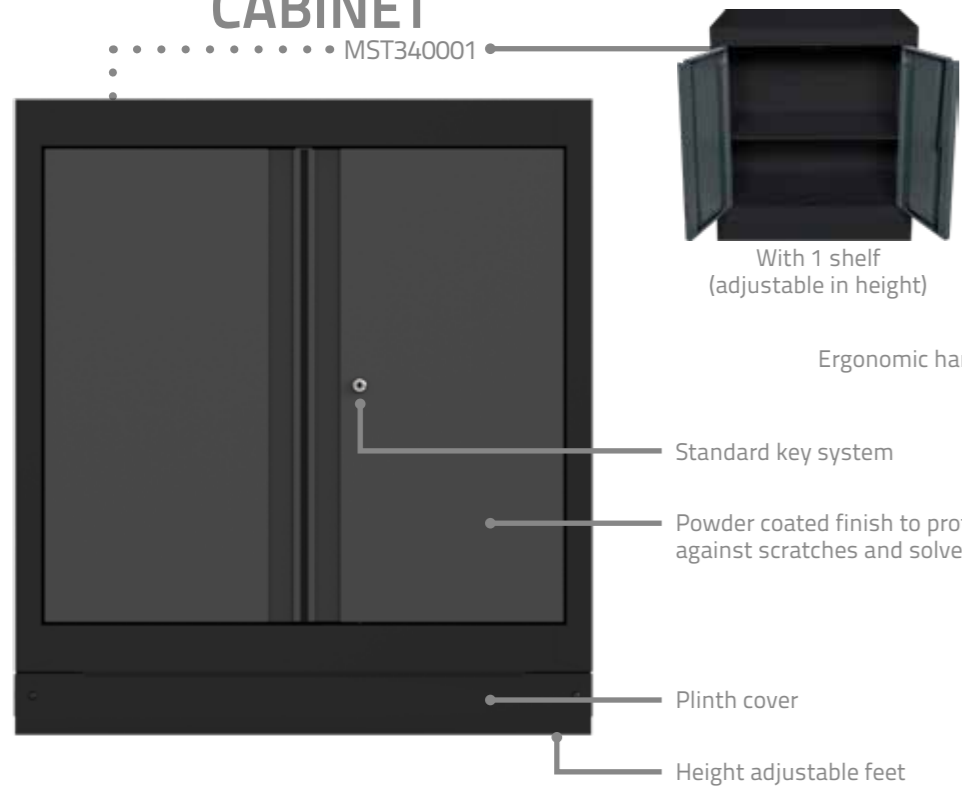
“Easy, fast and accessible!”

[www.boxotools.eu](http://www.boxotools.eu)

> OSM configurator



# CABINET



**CABINET WITH 2 DRAWERS**  
MST340021

- Drawer capacity: 90 kg
- Foam capacity: 2x4
- Weight: 51 kg
- Auto returning ball bearing slider for smooth opening and closing



**CABINET WITH 2 DRAWERS AND 1 DOOR**  
MST341031

- Drawer capacity: 50 kg
- Foam capacity: 3x4
- Weight: 48.3 kg
- Auto returning ball bearing slider for smooth opening and closing
- With 1 shelf



**MULTI-FUNCTIONAL CABINET**  
MST341021

- With paper roll holder and rubbish bin
- Drawer capacity: 50 kg
- Weight: 44.3 kg
- Auto returning ball bearing slider for smooth opening and closing



**MULTIFUNCTIONAL RECYCLE BIN**  
MST340011

- 3 plastic bins with swing door access
- Weight: 42.5 kg



## BOXO CABINETS

All BOXO cabinets have the following specifications as standard:

- Dimensions (hxbxd) 953x861x500 mm
- Incl. height adjustable feet

## NO PROJECT TOO BIG OR SMALL !

# DRAWER CABINET

••••• MST340051  
Available with 2, 4, 5, 7, 8 or 9 drawers



Standard key system



Auto returning ball bearing slider for smooth opening and closing. 50 kg drawer capacity



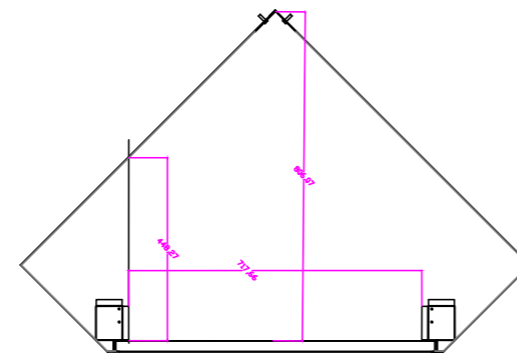
A dedicated place for every tool,  
All easily available!



## CORNER CABINET

MST30001A

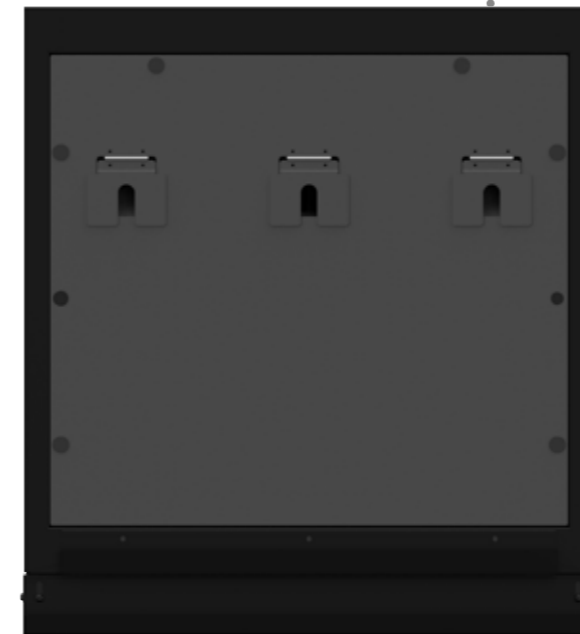
- With 1 shelf
- Shelf capacity: 20 kg
- Depth: 883 mm
- Weight: 56 kg



## REEL CABINET

MST3400AGW

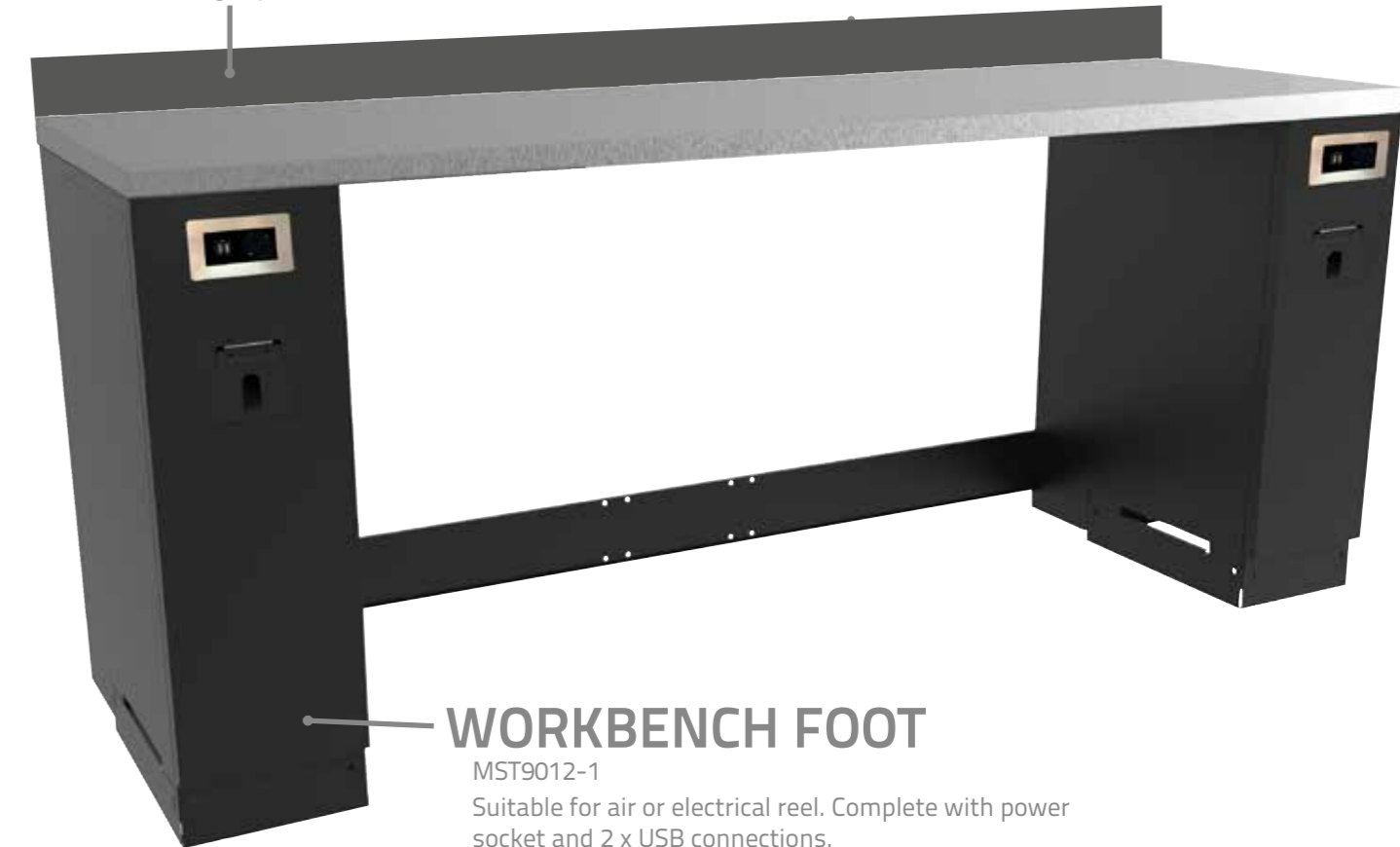
- Suitable for oil-, air- and electrical reels
- Depth: 500 mm
- Weight: 53 kg



## WORKBENCH

- Worktop available in 500 mm or 700 mm depths
- Possibility to attach back panel

10 cm high upstand



## WORKBENCH FOOT

MST9012-1

Suitable for air or electrical reel. Complete with power socket and 2 x USB connections.



## ROLL CABINETS, WITH 4 SWIVEL CASTERS

4 x heavy-duty swivel castors.  
Front handles to easily manoeuvre under workbench or around the workshop.

### 1. 7 DRAWER TROLLEY, FOR OSM, 671 MM MST260072

- Depth: 459 mm
- Width: 671 mm
- Height: 940 mm
- Drawer capacity: 40 kg
- Foam capacity: 7x3
- Weight: 56 kg

### 2. 7 DRAWER TROLLEY, FOR OSM, 833 MM MST340072

- Depth: 459 mm
- Width: 833 mm
- Height: 940 mm
- Drawer capacity: 40 kg
- Foam capacity: 7x4
- Weight: 71 kg



Contact us to personalise yours!





## WORKTOPS

### 1. RVS TOP

MSS-SERIE

- 40 mm height

### 2. PLYWOOD TOP

MSF-SERIE

- 40 mm height
- UV and liquid resistant top layer

### 3. WOODEN TOP

MSN/MSB-SERIE

- 40 mm height
- Double varnished for durability

### 4. GALVANISED (ON REQUEST)

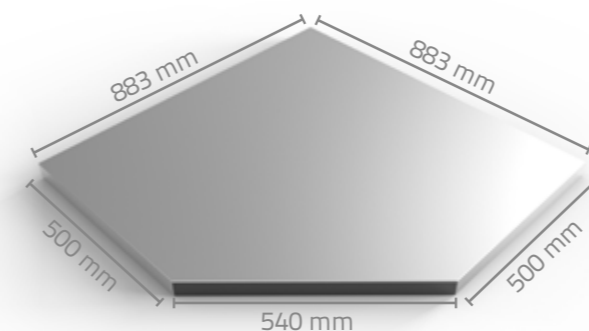
MSV-SERIE

- 40 mm height
- Personalisation available

### RVS TOP FOR CORNER CABINET

P-MST-08A/B

- Depth:  
P-MST-08A: 500 mm  
P-MST-08B: 700 mm



### WOODEN TOP FOR CORNER CABINET

P-MST-08WA/B

- Depth:  
P-MST-08WA: 500 mm  
P-MST-08WB: 700 mm



Worktops available in two depths - 500 or 700 mm



## TALL BASE CABINETS

### 1. TALL BASE CABINET WITH ADJUSTABLE SHELVES

MST240001

- Shelf capacity: 20 kg
- Height: 1980 mm
- Depth: 500 mm
- Width: 600 mm
- Weight: 64 kg

### 2. TALL BASE CABINET WITH DOUBLE DOORS AND ADJUSTABLE SHELVES

MST44001

- Shelf capacity: 20 kg
- Height: 1980 mm
- Depth: 500 mm
- Width: 1200 mm
- Weight: 112 kg

1 fixed shelf

Capacity: 20 kg

Reversible door to suit your workspace



# CUPBOARDS

## 1. OVERHEAD CORNER CUPBOARD WITH GAS STRUT

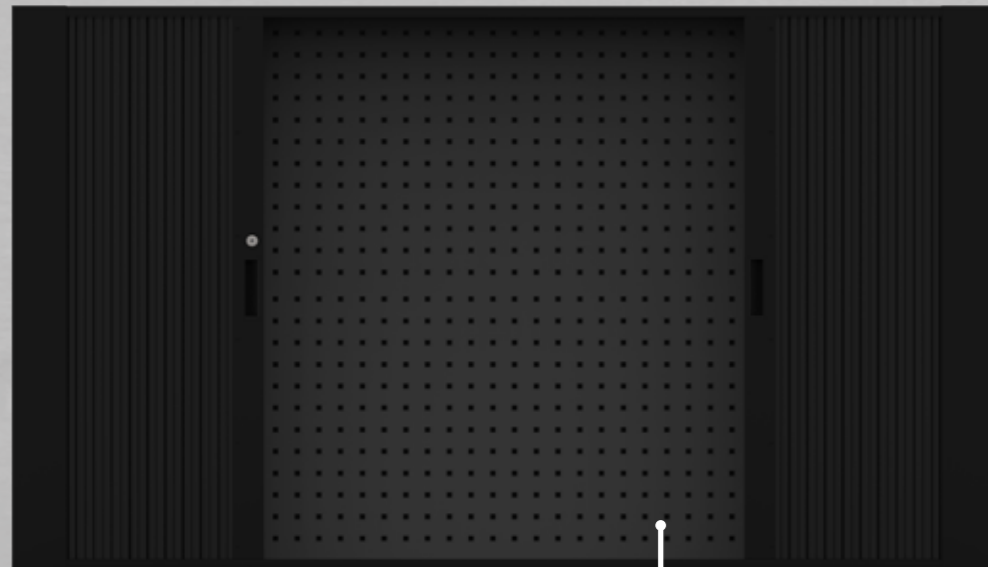
MSC30001

- Width: 861 mm
- Height: 338 mm
- Depth: 861 mm

## 2. OVERHEAD CUPBOARD WITH GAS STRUT

MSC340001

- Width: 861 mm
- Height: 338 mm
- Depth: 300 mm



## WALL STORAGE SYSTEM WITH 'TAMBOUR' ROLLER SHUTTER DOOR

AB68001

- Width: 1722 mm
- Height: 1025 mm
- Depth: 175 mm



## 3. STAINLESS STEEL BACK PANEL

MSN002S

- Dimensions (HxWxD) 338x861x20 mm



## 4. BLANK BACK PANEL

MSN002-3

- Dimensions (HxWxD) 338x861x20 mm



## 5. PERFORATED BACK PANEL

MSN002-1

- Dimensions (HxWxD) 338x861x20 mm



## 6. BACK PANEL WITH POWERFRAME

MSN002P-004

- Dimensions (HxWxD) 338x861x20 mm
- Powerframe for OSM
- 2x 230V & 2x USB of 2x 230V & 2x C6UTP (please contact us for details)



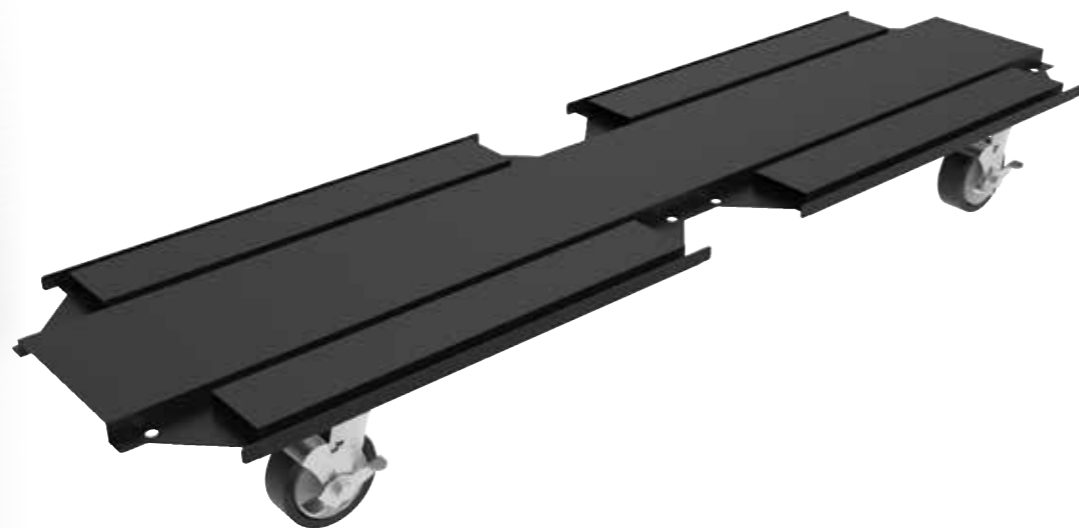
Available with data-connection (C6UTP)

# Create your own mobile workbench!

## MOBILE BASE FOR ALL CABINETS

P-MST-13

- Frame for 2 cabinets:  
Dimensions (HxWxD) 87x1722x500 mm
- Can be mounted to a back panel



## ACCESSORIES

1. ADJUSTABLE FRAME FOR WORKBENCH SUPPORT  
P-OSM-SBF



2. BACK PANEL FOR BEHIND ROLLER CABINET  
P-MST-06-01



3. SIDEPANEL FOR P-OSM-SBF  
P-OSM-SBF-02

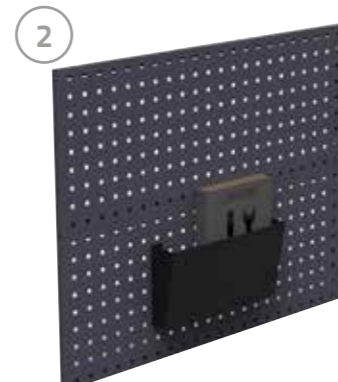


# ACCESSOIRES

1. PAPER ROLL HOLDER  
MAA008



2. DOCUMENT HOLDER  
MAA021



3. SPRAY CAN HOLDER  
MAA003



4. IMPACT WRENCH HOLDER  
MAA011A



5. TOOL HOOK 50 MM  
P-TSH-20



6. DOUBLE TOOL HOOK 50 MM  
P-TDH-20



7. IMPACT SOCKET HOLDER  
MAA034



8. TOOL HOOK 95 MM  
P-TSH-40



9. DOUBLE TOOL HOOK 95 MM  
P-TDH-40



10. DOCUMENT SHELF  
MSN007-2

11. UNIVERSAL BOX RACK  
MSN008-2

12. POWER OUTLET

2X 230V & 2X USB OF 2X 230V & 2X DATA (C6UTP)  
(please contact us for details)



# THE IDEAL SOLUTION FOR EVERY WORKSPACE



## HANGER RAIL FOR TALL BASE CABINET

P-OSM-24H



## PLINTH COVER CABINET

P-MST-01

- Height: 900 mm
- Width: 500 mm



## PLINTH COVER FOR TALL BASE CABINET

P-MST-02

- Height: 900 mm
- Width: 500 mm



## BACKPANEL FOR BEHIND ROLLER CABINET

P-MST-06

- Height: 833 mm
- Width: 963 mm



## 2PC SHELF PACK FOR MST24001

P-MST-03

- Capacity: 20 kg

## SHELF FOR MST44001

P-MST-07

- Capacity: 20 kg

## CORNER SUPPORT BRACKET FOR WORKTOP

P-OSM-SBL



## DRAIN COVER FOR REEL CABINET MST3400AGW

P-OSM-AGW





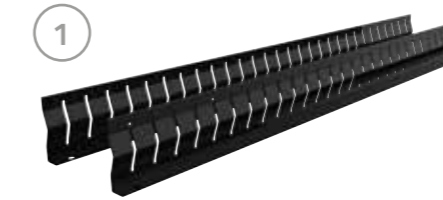
Boxo trolley at AUDI R8 LMS Cup

## DRAWER DIVIDER SETS

### 2PC FRONT & BACK PANEL FOR DRAWER DIVIDER

DD009-01

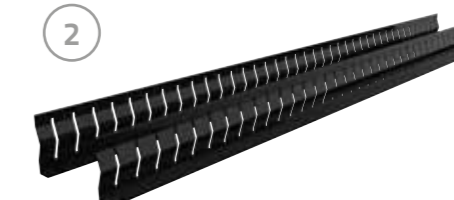
- Dimensions (HxW) 62x566 mm
- Capacity: 3 x foams



### 2PC FRONT & BACK PANEL FOR DRAWER DIVIDER

DD009-01C

- Dimensions (HxW) 62x750 mm
- Capacity: 4 x foams



### 2PC METAL PARTITION FOR DRAWER DIVIDER

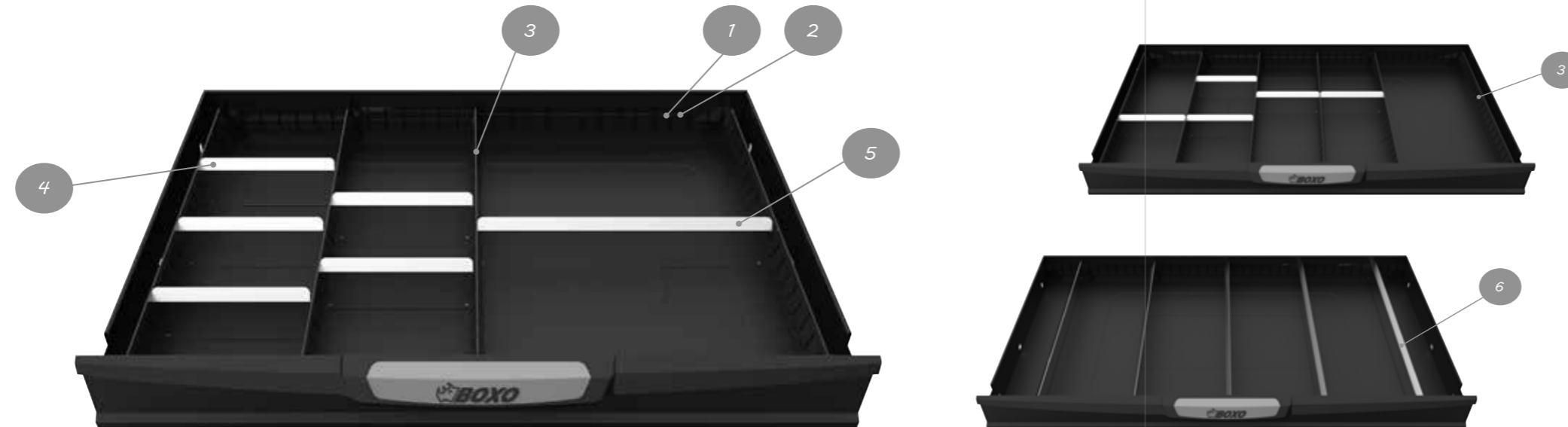
DD009-10

- Dimensions (HxW) 49x395 mm
- Use in combination with all drawer dividers



## DRAWER DIVIDERS

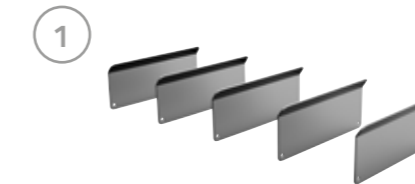
Perfectly organise small components or fixings with BOXO drawer dividers.



### 5PC ALUMINIUM DRAWER DIVIDER

DD009A-14

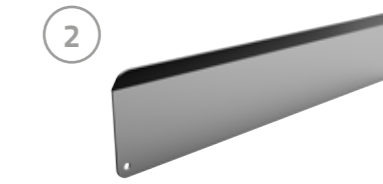
- Dimensions (HxW) 50x127 mm



### 1PC ALUMINIUM DRAWER DIVIDER

DD009A-15

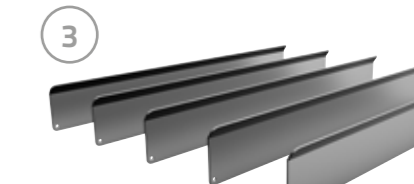
- Dimensions (HxW) 50x260 mm



### 5PC ALUMINIUM DRAWER DIVIDER

DD009A-16

- Dimensions (HxW) 50x395 mm



## DRAWER PARTITION TRAYS

### 1. EMPTY TRAY WITH 2 COMPARTMENTS

- BXP000-6  
 ▪ Dimensions (lxh) 398x189 mm



### 2. EMPTY TRAY WITH 4 COMPARTMENTS

- BXP000-7  
 ▪ Dimensions (lxh) 398x189 mm



### 3. EMPTY TRAY WITH 8 COMPARTMENTS

- BXP000-8  
 ▪ Dimensions (lxh) 398x189 mm



### 4. EMPTY TRAY WITH 12 COMPARTMENTS

- BXP000-9  
 ▪ Dimensions (lxh) 398x189 mm



### 5. EMPTY TRAY WITH 4 COMPARTMENTS

- BXP000-1  
 ▪ Dimensions (lxh) 568x395 mm



### 6. EMPTY TRAY WITH 3 COMPARTMENTS

- BXP000-2  
 ▪ Dimensions (lxh) 568x395 mm



### 7. EMPTY TRAY WITH 10 COMPARTMENTS

- BXP000-3  
 ▪ Dimensions (lxh) 568x395 mm



### 8. EMPTY FOAM TRAY WITH 1 COMPARTMENT

- BX000-1  
 ▪ Dimensions (lxh) 398x189 mm



### 9. EMPTY FOAM TRAY WITH 3 COMPARTMENTS

- BX000-3  
 ▪ Dimensions (lxh) 398x189 mm



“Well organised”



## MOBILE WORKBENCH 'RACING'

- Width: 861 mm
- Depth: 500 mm
- Overall height (incl. worksurface and mobile base): 1060 mm

### Inclusive:

- RVS top
- Mobile base, suitable for 2 cabinets



# Mobile workbench 'RACING' For car-, kart- and motorsport.

Put together your own combination!



Quick..  
efficient..  
organised!

MOBILE

## BOXO TOOLS

In addition to the modular storage system, BOXO provides a comprehensive programme of hand and specialist tools. Tool control foams keep everything in place and easy to find.



CUSTOMISE YOUR OWN TOOL SETS!

[WWW.BOXOTOOLS.EU](http://WWW.BOXOTOOLS.EU)

[WWW.BOXO-TOOLS.NL](http://WWW.BOXO-TOOLS.NL)



Maarssebroeksedijk 39,  
3542 DM Utrecht,  
Netherlands  
Postbus 40353,  
3504 AD Utrecht

T +31 (0)30 241 50 11  
F +31 (0)30 241 50 46  
E [sales@serenco.nl](mailto:sales@serenco.nl)  
I [www.boxotools.eu](http://www.boxotools.eu)

